

# Apartment 23



# Apartment 23

## Two bedroom period apartment

This beautifully appointed two-bedroom second floor apartment has a double aspect sitting room offering splendid views over the grounds from the gracious bowed granite mullion window.

The modern kitchen/breakfast room is fitted with integrated appliances including oven, hob and washer/dryer. Both double bedrooms have fitted wardrobes and enjoy views either south over the gardens or north towards Dartmoor.

### Property specifications

- Large, double aspect sitting room offering splendid views
- Two double bedrooms with fitted wardrobes
- Elegant hallway with large built-in cupboard
- Separate kitchen offering spectacular views over the village of Ermington to Dartmoor and beyond
- Accessed by staircase or lift
- Conveniently located in the period main house where all the facilities and guest suite are located
- Twelve acres of gardens and grounds

**Guide Price £235,000** (other fees apply)

Monthly management fee: £1277.31

Council tax: band D

Viewing by appointment.

**01752 830 549**

**[www.audleyvillages.co.uk](http://www.audleyvillages.co.uk)**

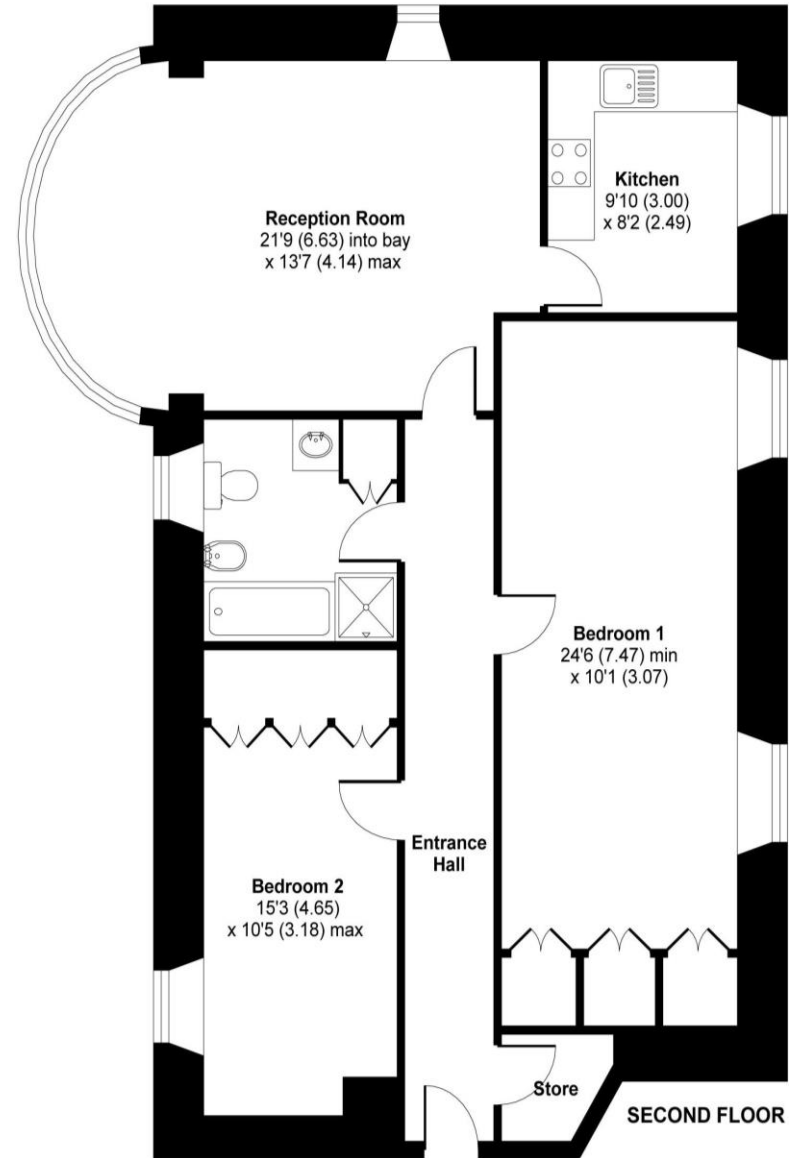


# Apartment 3

## Internal Measurements

	Metric (m)	Imperial (ft)
Kitchen	3.00 x 2.49	9'10" x 8'2"
Reception room	6.63 x 4.14	21'9" x 13'7"
Bedroom 1	7.47 x 3.07	24'6" x 10'1"
Bedroom 2	4.65 x 3.18	15'3" x 10'5"
<b>Total sq ft: 1049</b>		

Built in wardrobes in bedrooms have not been included in the overall dimensions. Maximum measurements shown.



These pages are intended for marketing purposes only. Designs vary according to plot and all details should be checked at the Sales office. January 2022.

