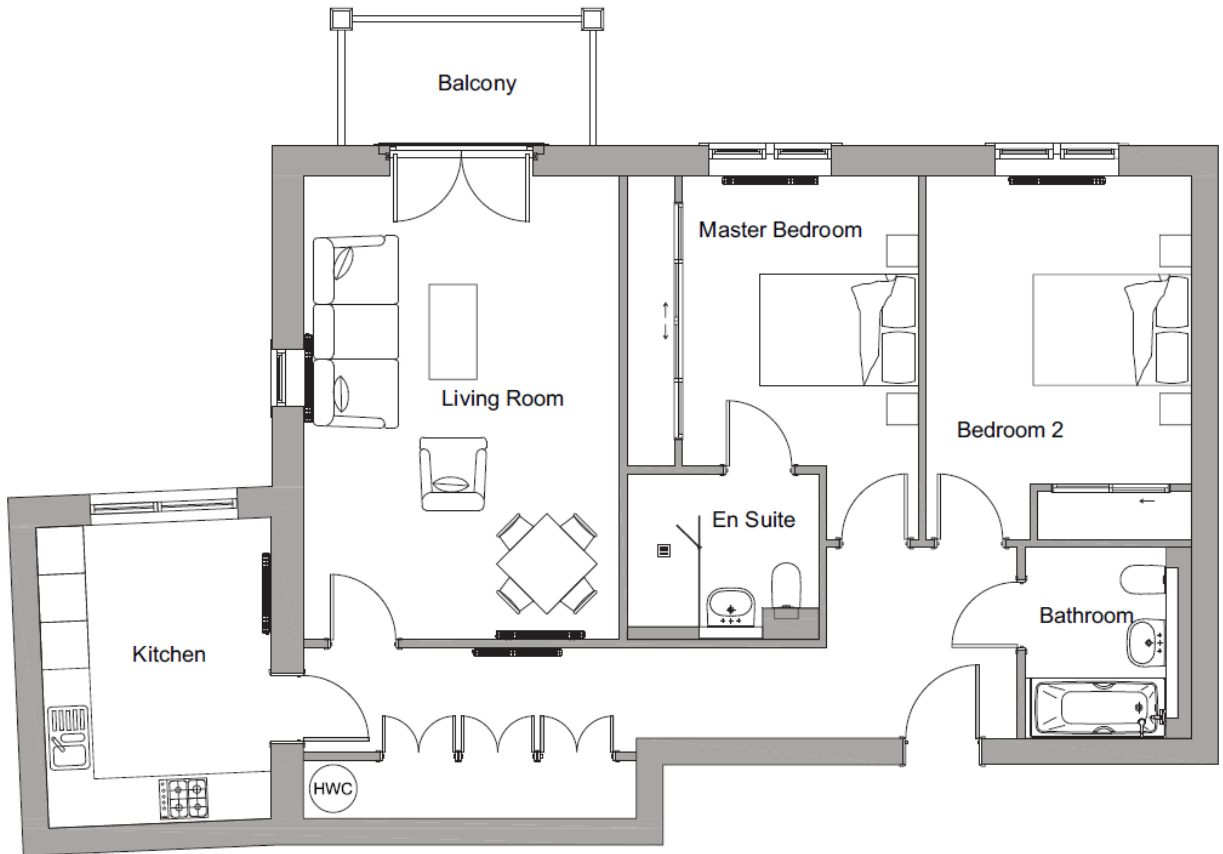
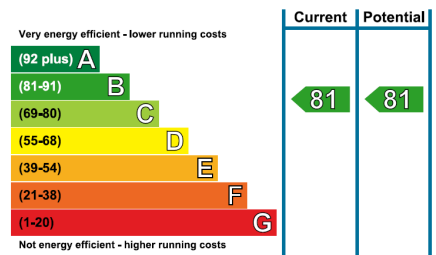


# Audley Clevedon

23 Conyers View  
Two Bedroom pre-owned apartment



Internal Measurements	Metric (m)	Imperial (ft)
Living Room	5.85m x 3.99m	19'3" x 13'1"
Kitchen	3.80m x 2.80m	12'6" x 9'3"
Master Bedroom	3.66m x 2.97m	12'0" x 9'9"
Bedroom two	3.89m x 3.35m	12'9" x 11'0"
Balcony	3.09 x 1.55m	10'2" x 5'1"
Total Sq. Ft 1029		



Audley Clevedon  
Ben Rhydding Drive, Ben Rhydding, Ilkley, LS29 8AQ  
01943 601 964 [clevedonsales@audleyvillages.co.uk](mailto:clevedonsales@audleyvillages.co.uk)  
[www.audleyvillages.co.uk](http://www.audleyvillages.co.uk)

Built in wardrobes in bedrooms have not been included in the overall dimensions.  
Maximum measurements shown. These pages are intended for marketing purposes only.  
Designs vary according to plot and all details should be checked at the Sales office.  
October 2014



# Audley Clevedon

23 Conyers View  
Two Bedroom pre-owned apartment



## Two bedroom first floor apartment



This well-appointed, first floor apartment has amazing views of the Wharfe Valley, the property boasts a spacious balcony which can be directly accessed via the living room. The SieMatic kitchen has integrated Neff appliances and a full length window that perfectly compliments the room. The master bedroom has built-in wardrobes and a walk in shower.



### Property specifications

- Large living room with direct access to the private balcony
- 3 double storage cupboards in hallway
- Guest bedroom
- Master bedroom with en suite shower and built-in wardrobes
- Bathroom
- Fully fitted SieMatic kitchen with Neff appliances



**Guide Price £460,000** (other fees apply)

Monthly management fee £800.29  
Annual ground rent £500

Viewing by appointment with the sales office.

Audley Clevedon  
Ben Rhydding Drive, Ben Rhydding, Ilkley, LS29 8AQ  
01943 601964 [clevedonsales@audleyvillages.co.uk](mailto:clevedonsales@audleyvillages.co.uk)  
[www.audleyvillages.co.uk](http://www.audleyvillages.co.uk)

