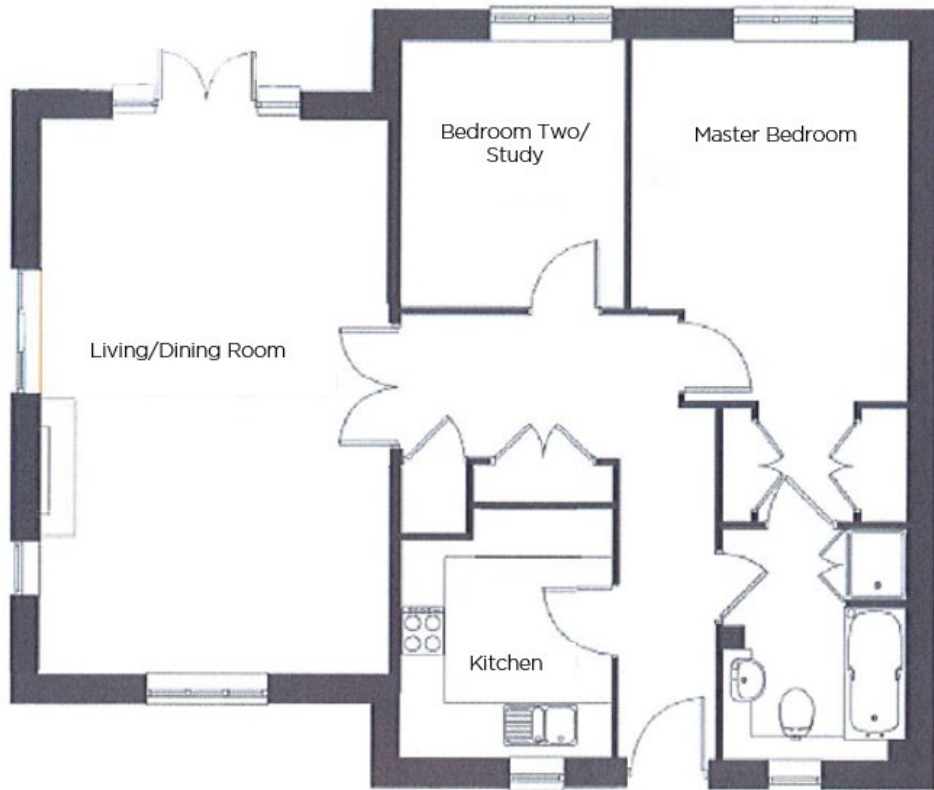
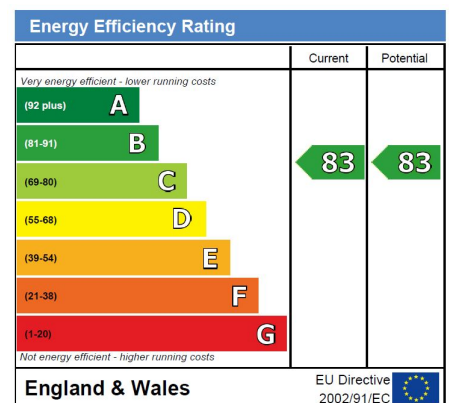


Audley St Elphin's Park

20 Crompton Close
Two bedroom 'pre-owned' apartment



Internal Measurements	Metric (m)	Imperial (ft)
Living/Dining Room	4.40m x 6.90m	14'6" x 22'8"
Kitchen	2.55m x 3.05m	8'5" x 10'0"
Master Bedroom	3.45m x 4.45m	11'5" x 14'8"
Bedroom Two/Study	2.75m x 3.35m	9'0" x 11'0"



Audley St Elphin's Park
Dale Road South, Darley Dale, Matlock DE4 2RH
01629 733 337 stelphinssales@audleyvillages.co.uk

Built in wardrobes in bedrooms have not been included in the overall dimensions.
Maximum measurements shown. These pages are intended for marketing purposes only.
Designs vary according to plot and all details should be checked at the Sales office.
July 2017

Audley St Elphin's Park

20 Crompton Close
Two bedroom 'pre-owned' apartment



Two Bedroom Apartment

This immaculate two bedroom apartment is located on the ground floor of Crompton Close and next to St Elphin's House. The property enjoys a large living/dining room that opens up onto a private south-facing terrace. There is a modern shaker style kitchen with integrated appliances and a bathroom with luxurious Villeroy & Boch sanitaryware.



Property specifications

- Bright living/dining room with fitted electric fireplace
- Private south-facing terrace
- Shaker style kitchen with integrated appliances
- Master bedroom with fitted wardrobes
- Guest bedroom/study
- Allocated parking space

£320,000* (other fees apply)

Monthly management fee £696.18
Annual Ground Rent £100

Viewing by appointment with the sales office.

Audley St Elphin's Park
Dale Road South, Darley Dale, Matlock DE4 2RH
01629 733 337 stelphinssales@audleyvillages.co.uk

