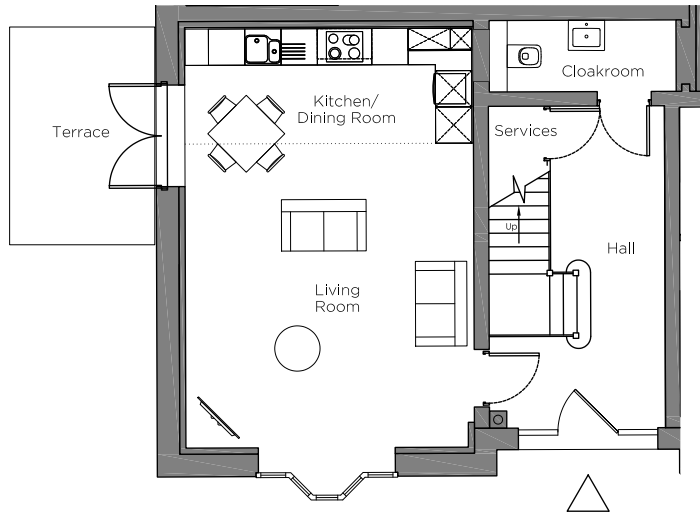
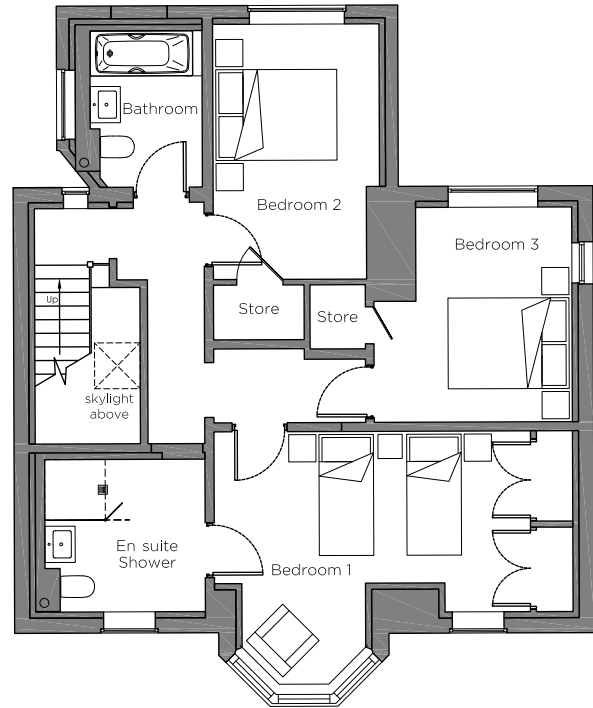


# Audley Chalfont Dene

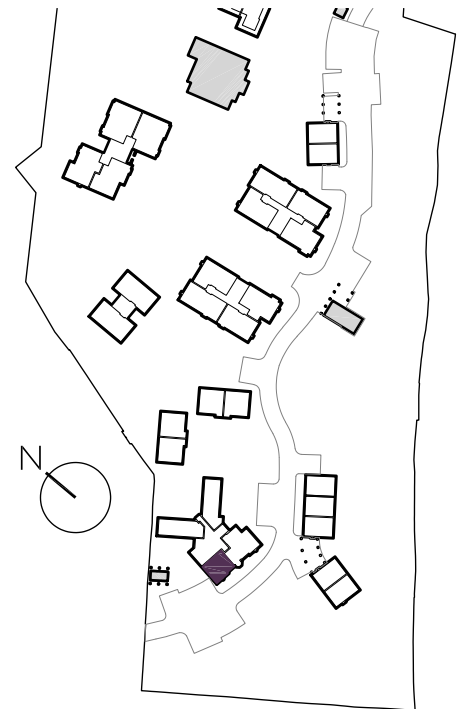
1 Rydinghurst House  
Cottage  
Plot 137



Ground Floor



1st Floor



## Internal Measurements

## Metric (m)

## Imperial (ft)

Living Room	4.67 x 3.40	15'4" x 11'2"
Kitchen/Dining Room	4.77 x 3.04	15'8" x 10'0"
Bedroom 1	5.22 x 2.99	17'2" x 9'10"
Bedroom 2	4.22 x 2.75	13'10" x 9'0"
Bedroom 3	3.55 x 2.58	11'8" x 8'6"
Terrace (approx)	3.60 x 2.40	11'10" x 7'10"

Audley Chalfont Dene,  
Rickmansworth Lane,  
Chalfont St Peter, Buckinghamshire SL9 0LX  
01494 876 173  
[www.audleyvillages.co.uk](http://www.audleyvillages.co.uk)

These floor plans are illustrative and for marketing purposes only. Maximum measurements are shown with longer dimension quoted first. Dimensions are quoted for the main area of the room only. Built-in wardrobes not included in the overall room dimensions. Furniture shown to illustrate possible room layouts and not included in sale. Designs vary according to plot. All details should be checked at the Sales Office.

# Audley Chalfont Dene

1 Rydinghurst House  
Cottage  
Plot 137



## 2 bedroom cottage

A unique three bedroom property split over two floors in the original Rydinghurst House, accessed via its own front door directly from the landscaped grounds.

The cottage has a dual-aspect open plan living/dining room with patio doors opening to a terrace, a small bay window and a downstairs cloakroom.

Upstairs, the master bedroom has a bay window, an en suite shower room and double built-in wardrobes.

The other two double bedrooms have storage cupboards and there is a separate guest bathroom.

Property specifications:

- Skylight window above the stairs
- Unique property in the restored Rydinghurst House
- Luxury Villeroy & Boch bathroom and en suite
- Fully equipped SieMatic kitchen with Corian worktops and integrated appliances.

Audley Chalfont Dene,  
Rickmansworth Lane,  
Chalfont St Peter, Buckinghamshire SL9 0LX  
01494 876 173  
[www.audleyvillages.co.uk](http://www.audleyvillages.co.uk)

