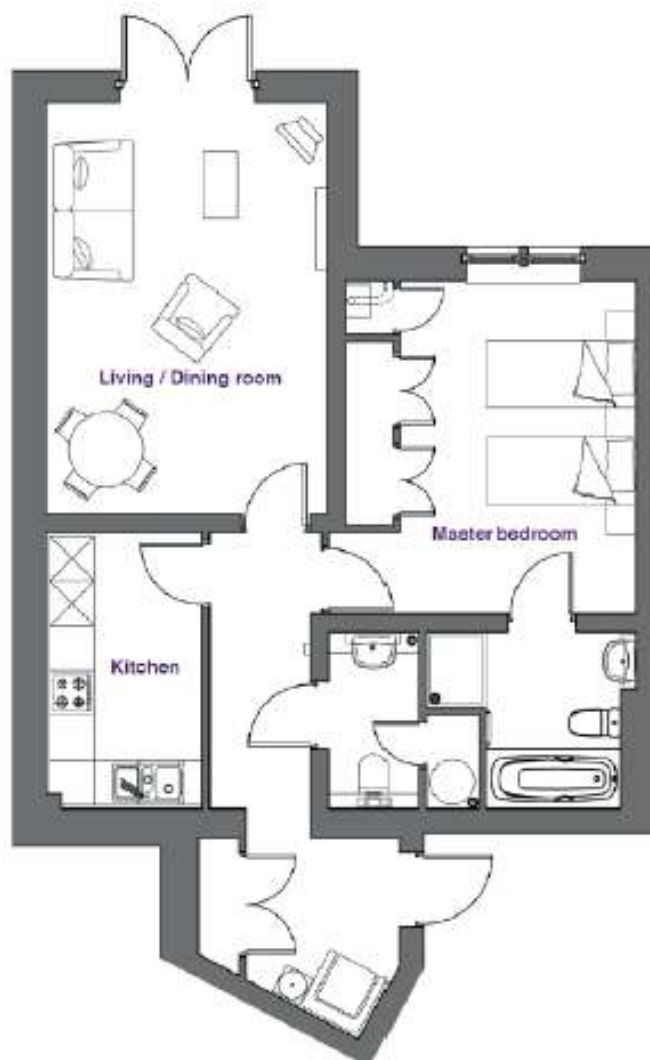


# Audley Clevedon

1 Padgett Court

One bedroom pre-owned ground floor apartment



## Internal Measurements

## Metric (m)

## Imperial (ft)

Living/Dining room

5.55m x 3.78m

18'2" x 12'5"

Kitchen

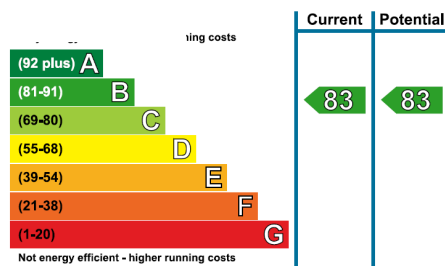
3.70m x 2.10m

12'2" x 6'10"

Master Bedroom

4.47m x 3.11m

14'8" x 10'2"



Audley Clevedon  
Ben Rhydding Drive, Ben Rhydding, Ilkley, LS29 8AQ  
01943 601 964 [clevedonsales@audleyvillages.co.uk](mailto:clevedonsales@audleyvillages.co.uk)  
[www.audleyvillages.co.uk](http://www.audleyvillages.co.uk)

Built in wardrobes in bedrooms have not been included in the overall dimensions.  
Maximum measurements shown. These pages are intended for marketing purposes only.  
Designs vary according to plot and all details should be checked at the Sales office.  
June 2012

# Audley Clevedon

1 Padgett Court

One bedroom pre-owned ground floor apartment

ONE YEAR  
MANAGEMENT FEE  
INCLUDED



## One bedroom ground floor apartment

This well-appointed apartment boasts a private terrace with views overlooking the surrounding countryside. The living/dining room is spacious and offers direct access to the terrace via French doors. There is a modern SieMatic kitchen and a master bedroom that benefits from fitted wardrobes and an en suite bathroom.



### Property specifications

- Spacious living/dining room with double French doors leading onto a private terrace
- Modern SieMatic kitchen with integrated appliances
- Master bedroom with fitted wardrobes and en suite bathroom
- Separate WC
- Allocated parking space



**Guide Price £325,000** (other fees apply)

Monthly management fee £800.29

Annual ground rent £500

Viewing by appointment with the sales office.

Audley Clevedon  
Ben Rhydding Drive, Ben Rhydding, Ilkley, LS29 8AQ  
01943 601 964 [clevedonsales@audleyvillages.co.uk](mailto:clevedonsales@audleyvillages.co.uk)  
[www.audleyvillages.co.uk](http://www.audleyvillages.co.uk)

