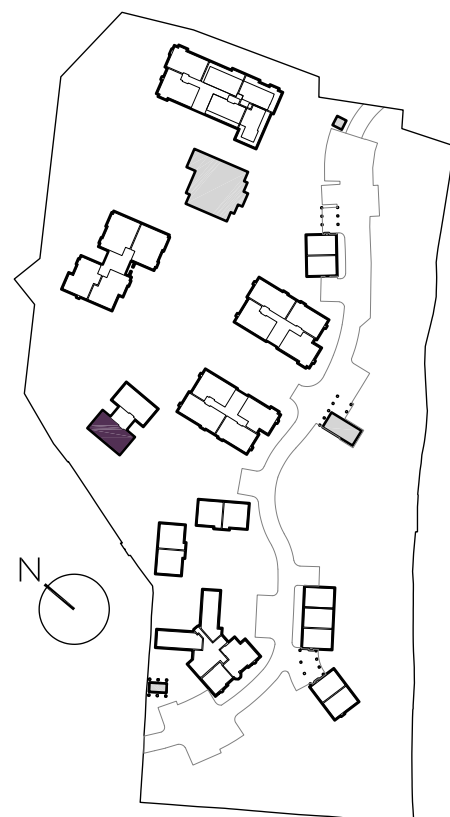
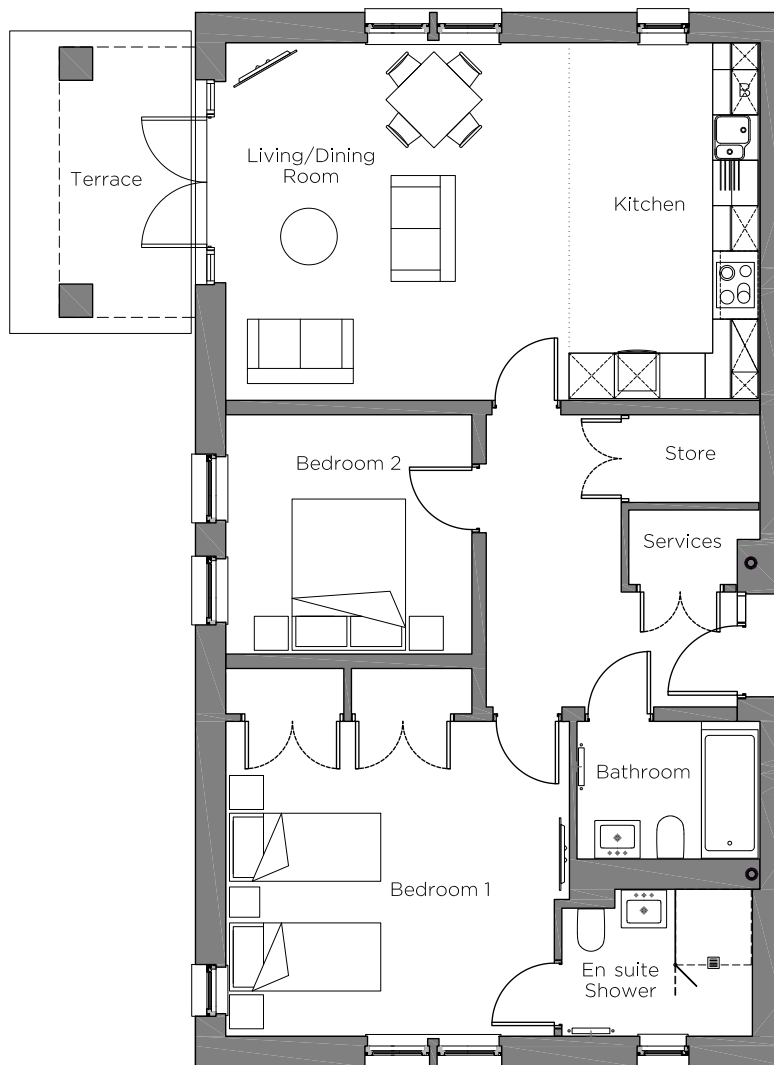


Audley Chalfont Dene

1 Chiltern Court
Ground Floor Apartment
Plot 124



Internal Measurements

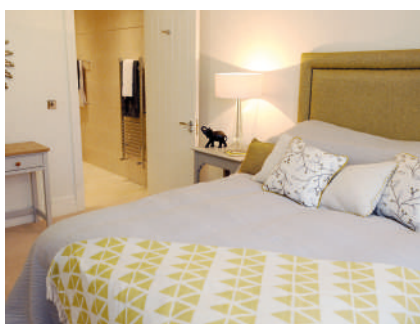
	Metric (m)	Imperial (ft)
Kitchen/Living/Dining Room	7.06 x 4.73	23'2" x 15'6"
Bedroom 1	4.34 x 4.16	14'3" x 13'8"
Bedroom 2	3.25 x 3.16	10'8" x 10'5"
Terrace (approx)	4.00 x 2.40	13'1" x 7'10"

Audley Chalfont Dene,
Rickmansworth Lane,
Chalfont St Peter, Buckinghamshire SL9 0LX
01494 876 173
www.audleyvillages.co.uk

These floor plans are illustrative and for marketing purposes only. Maximum measurements are shown with longer dimension quoted first. Dimensions are quoted for the main area of the room only. Built-in wardrobes not included in the overall room dimensions. Furniture shown to illustrate possible room layouts and not included in sale. Designs vary according to plot. All details should be checked at the Sales Office.

Audley Chalfont Dene

1 Chiltern Court
Ground Floor Apartment
Plot 124



2 bedroom, first floor apartment

A ground floor, two double bedroom apartment with a dual-aspect open plan kitchen/living room with doors opening on to a west-facing terrace.

The master bedroom has an en suite shower room and double built-in wardrobe.

The fully equipped SieMatic kitchen comes with Corian worktops and integrated appliances.

Property specifications:

- Luxury Villeroy & Boch bathrooms
- Open plan kitchen/living room with dining area
- Carpeted and decorated throughout

Audley Chalfont Dene,
Rickmansworth Lane,
Chalfont St Peter, Buckinghamshire SL9 0LX
01494 876 173
www.audleyvillages.co.uk

