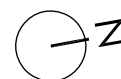
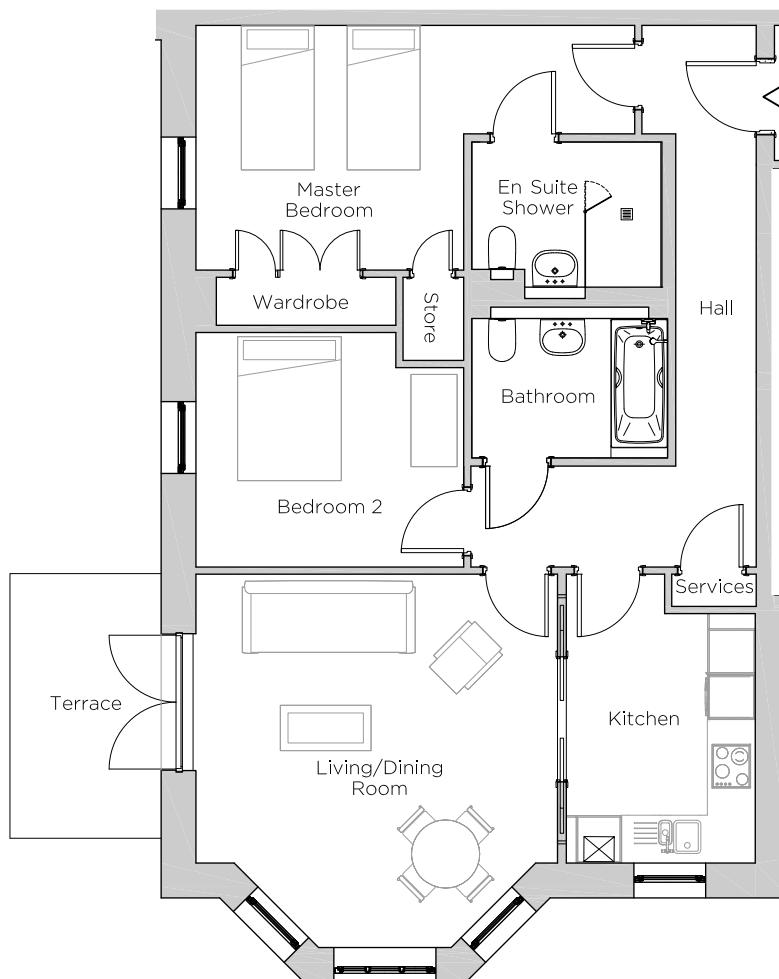


Audley Ellerslie

1 Austin Court
Plot 61

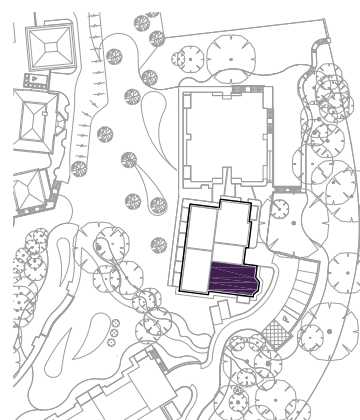


Internal Measurements

Metric (m)

Imperial (ft)

Living/Dining Room	4.94 x 4.78	16'2" x 15'8"
Kitchen	3.30 x 2.50	10'10" x 8'2"
Master Bedroom	3.54 x 3.23	11'7" x 10'7"
Bedroom 2	3.54 x 3.10	11'7" x 10'2"
Terrace	3.50 x 2.00	11'6" x 6'7"



Audley Ellerslie
Abbey Road, Malvern, Worcestershire WR14 3HL
01684 438 400
www.audleyvillages.co.uk

These floorplans are illustrative and for marketing purposes only. Maximum measurements are shown. Wardrobes not included in the overall room dimensions. Furniture shown to illustrate possible room layouts and not included in sale. Designs vary according to plot. All details should be checked at the Sales Office.

25 September 2017



Audley Ellerslie

1 Austin Court
Plot 61



2 bedroom, ground floor apartment

This two double bedroom apartment is on the ground floor of Austin Court, with parking available directly outside.

The spacious apartment has a master bedroom with an en suite shower room and double built-in wardrobes, plus a guest bathroom.

The large living/dining room has a bay window overlooking the Severn Valley and patio doors out on to a south-facing terrace.

Property specifications:

- The kitchen has glass pocket sliding doors in to the living/dining room
- Located in a quiet area of the village
- Luxury SieMatic kitchen with Corian worktops

Audley Ellerslie
Abbey Road, Malvern, Worcestershire WR14 3HL
01684 438 400
www.audleyvillages.co.uk

