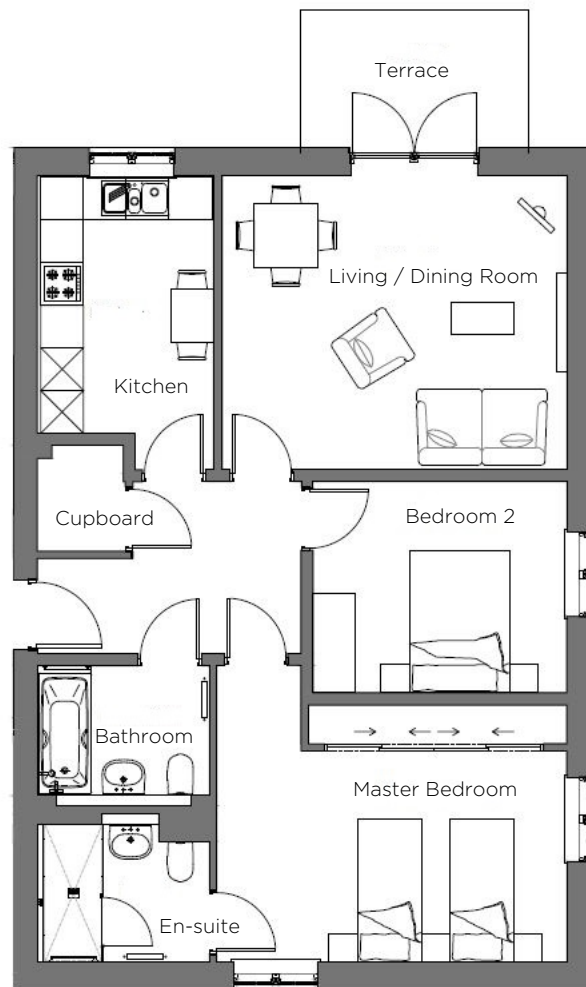


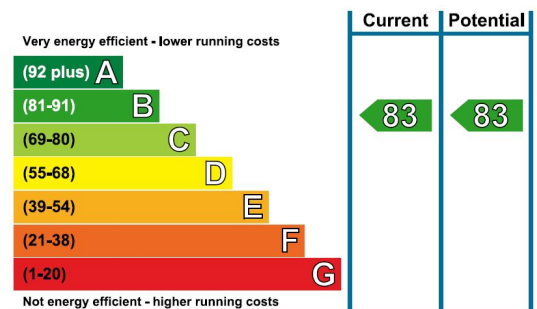
Audley Mote House

1 Woodville Court
Ground Floor Pre Owned Apartment



Internal Measurements

	Metric (m)	Imperial (ft)
Living/Dining Room	4.84m x 4.13m	15'11" x 13'7"
Kitchen	3.62m x 2.48m	11'11" x 8'1"
Master Bedroom	4.92m x 2.96m	16'2" x 9'9"
Bedroom 2	3.57m x 2.97m	11'8" x 9'9"
Bathroom	2.42m x 1.81m	7'11" x 5'11"
En-Suite	2.31m x 1.93m	7'7" x 6'4"
Terrace (approx)	3.2m x 1.93m	10'6" x 6'4"



Audley Mote House
Mote Park, Nr Bearsted, Kent ME15 8NQ
01622 737 279 motesales@audleyvillages.co.uk
www.audleyvillages.co.uk

Built-in wardrobes in bedrooms and Ensuite Bathrooms where applicable have not been included in the overall dimensions. Maximum measurements shown. Doorway and window alcoves where applicable have not been included in the dimensions. These pages are intended for marketing purposes only. Designs vary according to plot and all details should be checked at the Sales Office. Plans subject to planning and building regulations approval.
January 2017



Audley Mote House

1 Woodville Court
Ground Floor Pre Owned Apartment



Ground Floor 2 bed apartment

This charming two bedroom ground floor apartment sits overlooking the woodland area of the Mote House grounds. The south-east facing terrace makes this an ideal apartment for those looking for outside space and alfresco breakfasts.

Property specifications:

- Fully fitted kitchen / breakfast area
- Living / Dining room with double doors leading onto terrace
- Master bedroom with fitted wardrobes and large en-suite shower room
- Spacious second bedroom
- Family bathroom
- Large hallway with cupboard space
- Double glazing and gas central heating
- Outside terrace overlooking woodland
- Parking available

Price £385,000

Management charge: £760.50 per month

Ground rent: £250.00 per annum

Viewings by appointments with the sales office.

Audley Mote House
Mote Park, Nr Bearsted, Kent ME15 8NQ
01622 737 279 motesales@audleyvillages.co.uk
www.audleyvillages.co.uk

