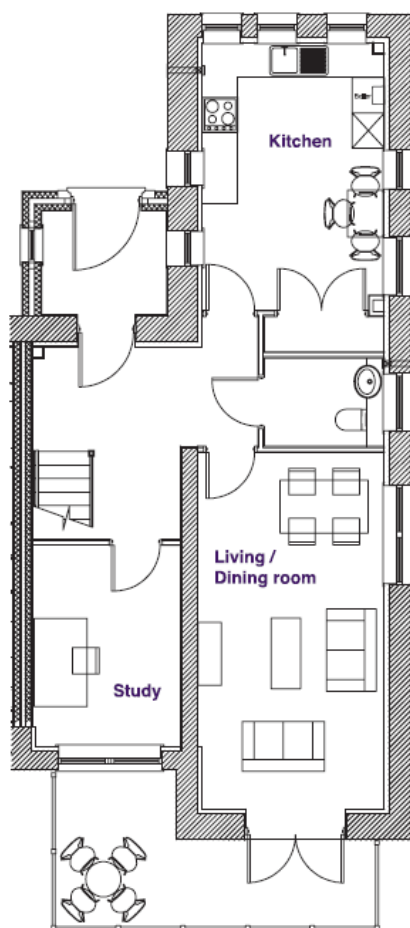
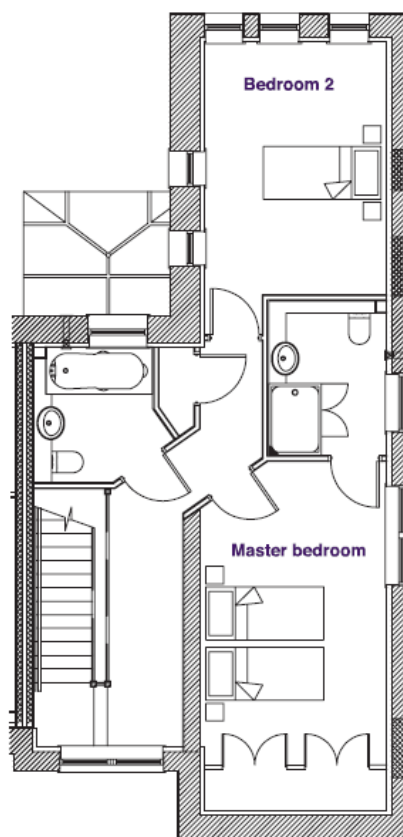


Audley St Elphin's Park

1 Thornton Mews
Two bedroom with study pre-owned cottage



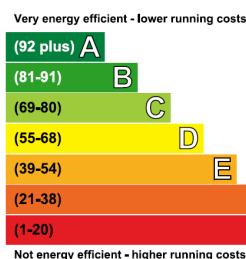
Ground floor



First floor

Internal Measurements	Metric (m)	Imperial (ft)
Living/Dining Room	3.25m x 6.00m	10'8" x 19'8"
Kitchen	4.55m x 3.15m	14'11" x 10'4"
Master Bedroom	5.90m x 3.25m	19'3" x 10'8"
Bedroom two	4.30m x 3.20m	14'1" x 10'6"
Study	2.40m x 3.40m	7'10" x 11'1"

Total Sq.Ft 1375



Current	Potential
77	86

Audley St Elphin's Park
Dale Road South, Darley Dale, Matlock DE4 2RH
01629 258 001 stelphinssales@audleyvillages.co.uk

Built in wardrobes in bedrooms have not been included in the overall dimensions.
Maximum measurements shown. These pages are intended for marketing purposes only.
Designs vary according to plot and all details should be checked at the Sales office.
April 2019



Audley St Elphin's Park

1 Thornton Mews
Two bedroom with study pre-owned cottage



Photos for illustration purposes only

Two bedroom cottage with study

This large two bedroom triple aspect property enjoys a spacious living/dining room with a fireplace, full length windows and has French doors that open up onto a private decking area. Perfectly rounding off the ground floor is a modern kitchen with integrated appliances, WC and a study that can be used as a third bedroom. Leading upstairs there is a master bedroom with fitted wardrobes and an en suite shower room in addition to a guest bedroom and a separate bathroom.

Property specifications

- Two generously sized bedrooms
- Ground floor study that can be used as a bedroom
- Modern kitchen with integrated appliances
- Curtains, blinds and light fittings included
- Hillside views from the kitchen and second bedroom
- Allocated parking

£450,000 (other fees apply)

Monthly management fee £715.00
Annual ground rent £250

Viewing by appointment with the sales office.

Audley St Elphin's Park
Dale Road South, Darley Dale, Matlock DE4 2RH
01629 258 001 stelphinssales@audleyvillages.co.uk

