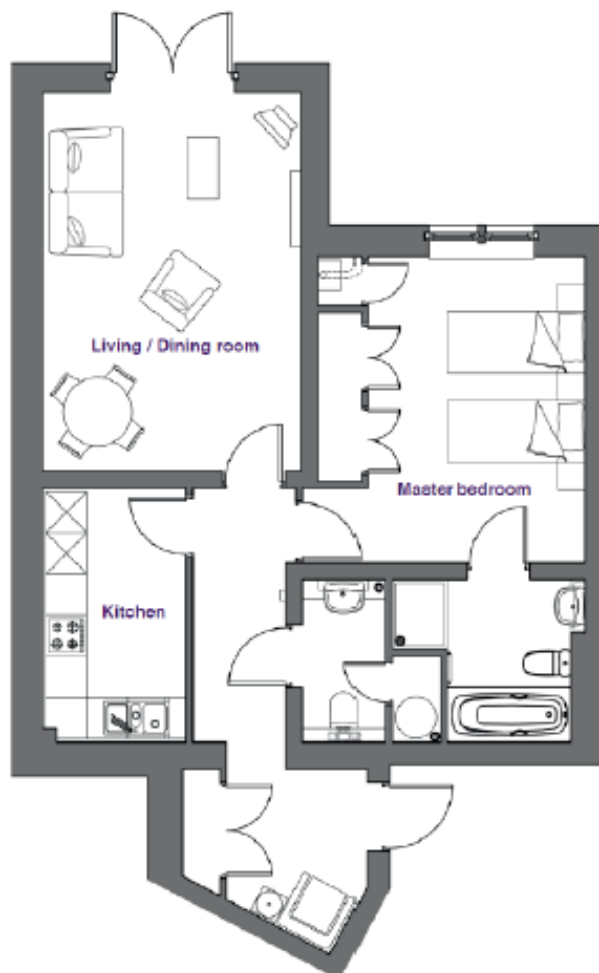


# Audley Clevedon

1 Padgett Court  
1 Bedroom pre-owned ground floor apartment



## Internal Measurements

Living/Dining room

Kitchen

Master Bedroom

## Metric (m)

5.55m x 3.78m

3.70m x 2.10m

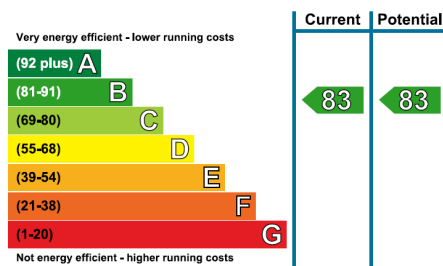
4.47m x 3.11m

## Imperial (ft)

18'2" x 12'5"

12'2" x 6'10"

14'8" x 10'2"



Audley Clevedon  
Ben Rhydding Drive, Ben Rhydding, Ilkley, LS29 8AQ  
01943 601 964 [clevedonsales@audleyvillages.co.uk](mailto:clevedonsales@audleyvillages.co.uk)  
[www.audleyvillages.co.uk](http://www.audleyvillages.co.uk)

Built in wardrobes in bedrooms have not been included in the overall dimensions.  
Maximum measurements shown. These pages are intended for marketing purposes only.  
Designs vary according to plot and all details should be checked at the Sales office.  
April 2019

# Audley Clevedon

1 Padgett Court  
1 Bedroom pre-owned ground floor apartment



## 1 bedroom ground floor apartment



This well-appointed apartment boasts a private terrace with views overlooking the surrounding countryside. The living/dining room is spacious and offers direct access to the terrace via French doors. There is a modern SieMatic kitchen and a master bedroom that benefits from fitted wardrobes and an en suite bathroom.



### Property specifications

- Spacious living/dining room with double French doors leading onto a private terrace
- Modern SieMatic kitchen with integrated appliances
- Master bedroom with fitted wardrobes and en suite bathroom
- Separate WC

**Guide Price £325,000** (other fees apply)

Monthly management fee £783.07  
Annual ground rent £500

Viewing by appointment with the sales office.



Photos for illustration purposes only

Audley Clevedon  
Ben Rhydding Drive, Ben Rhydding, Ilkley, LS29 8AQ  
01943 601 964 [clevedonsales@audleyvillages.co.uk](mailto:clevedonsales@audleyvillages.co.uk)  
[www.audleyvillages.co.uk](http://www.audleyvillages.co.uk)

