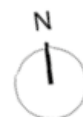
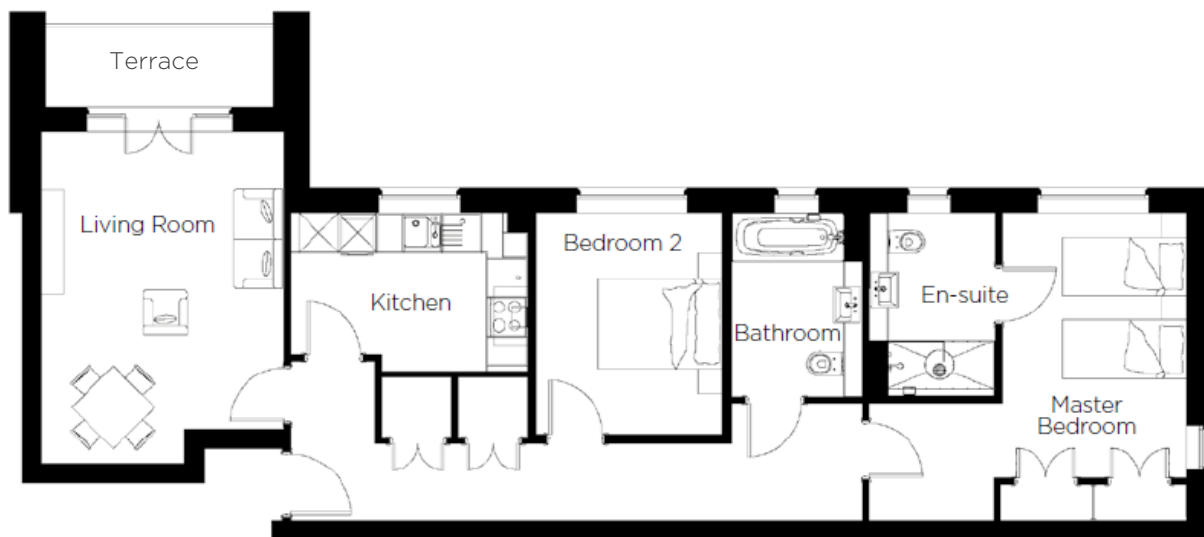
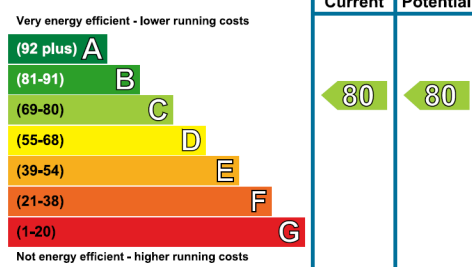


# Audley Binswood

1 Brunswick House  
2 Bedroom pre-owned ground floor apartment



Internal Measurements	Metric (m)	Imperial (ft)
Living/Dining Room	5.09 x 3.74	16'8" x 12'3"
Kitchen	3.63 x 2.43	11'11" x 8'0"
Master Bedroom	4.07 x 2.82	13'4" x 9'3"
Bedroom 2	3.40 x 2.85	11'2" x 9'4"
Total Sq.ft	898	



Audley Binswood  
Binswood Avenue  
Leamington Spa, CV32 5SE  
01926 339 484 binswoodsales@audleyvillages.co.uk  
www.audleyvillages.co.uk

Built in wardrobes in bedrooms have not been included in the overall dimensions.  
Maximum measurements shown. These pages are intended for marketing purposes only.  
Designs vary according to plot and all details should be checked at the Sales office.  
April 2019



# Audley Binswood

1 Brunswick House  
2 Bedroom pre-owned ground floor apartment



## 2 bedroom ground floor apartment



A charming two bedroom apartment that is conveniently located on the ground floor of Brunswick House. The property enjoys a large living room that is further enhanced by patio doors leading out to the private terrace. The master bedroom is spacious and has an en suite shower room along with dual wardrobes. The property is perfectly finished by a modern kitchen with Neff and Bosch appliances.



### Property specifications

- Spacious master bedroom with an en suite shower room
- Guest bedroom and bathroom
- Good storage facilities throughout
- Living room with access to a private terrace
- Modern kitchen with Neff and Bosch appliances



### Guide Price **£410,000** (other fees apply)

Monthly management fee £781.07  
Annual ground rent £500  
Monthly bistro credit: £57.86

Viewing by appointment with the sales office.

Audley Binswood  
Binswood Avenue  
Leamington Spa, CV32 5SE  
01926 339 484 binswoodsales@audleyvillages.co.uk  
www.audleyvillages.co.uk

