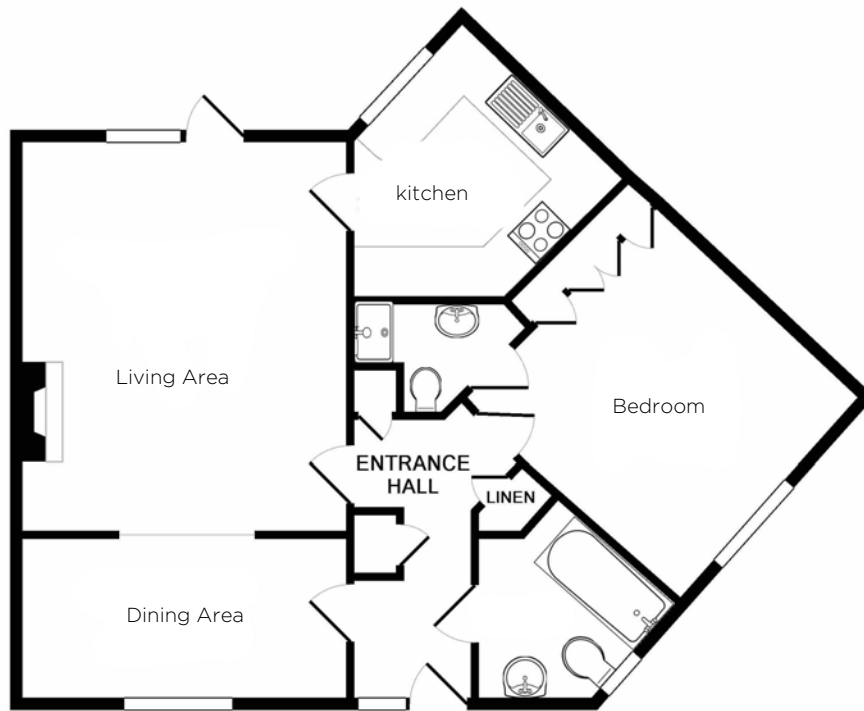
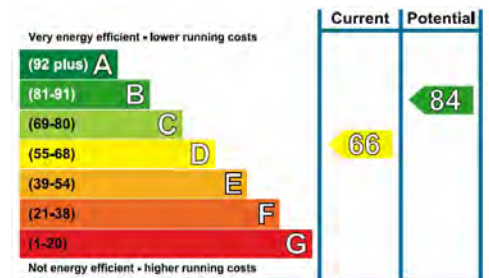


# Audley Willicombe Park

19 Willicombe Park  
Two bedroom 'Pre-owned' Bungalow



Internal Measurements	Metric (m)	Imperial (ft)
Living Area	4.80m x 4.00m	15' 9" x 13'2"
Dining Area	4.00m x 2.00m	13'2 x 6'8"
Kitchen	3.30m x 3.20m	10'8" x 10'6"
Bedroom	4.50m x 4.20m	14'8" x 13'11"



Audley Willicombe Park  
Willicombe House, Royal Tunbridge Wells, Kent TN2 3UU  
01892 457996 willicombesales@audleyvillages.co.uk  
www.audleyvillages.co.uk

Built-in wardrobes in bedrooms have not been included in the overall dimensions.  
Maximum measurements shown. These pages are intended for marketing purposes only.  
Designs vary according to plot and all details should be checked at the Sales Office.  
July 2017



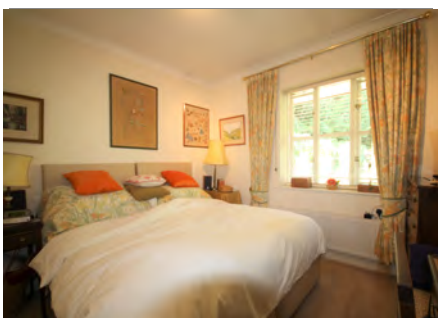
# Audley Willicombe Park

19 Willicombe Park  
Two bedroom 'Pre-owned' Bungalow



## Two Bedroom Maisonette

This two bedroom bungalow is located within close proximity of Willicombe House and all its amenities. The property features a separate kitchen in addition to the living/dining area and outside garden/patio area with parking nearby.

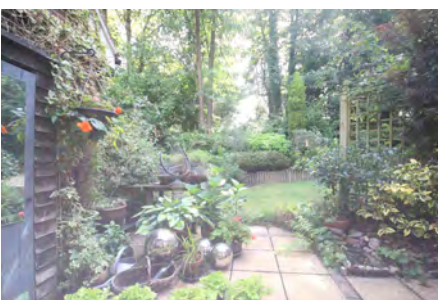


**£340,000** (other fees apply)

Monthly Management Fee £709.93

Annual Ground Rent £100

Viewings by appointment with the sales office



Audley Willicombe Park  
Willicombe House, Royal Tunbridge Wells, Kent TN2 3UU  
01892 457996 [willicombesales@audleyvillages.co.uk](mailto:willicombesales@audleyvillages.co.uk)  
[www.audleyvillages.co.uk](http://www.audleyvillages.co.uk)

