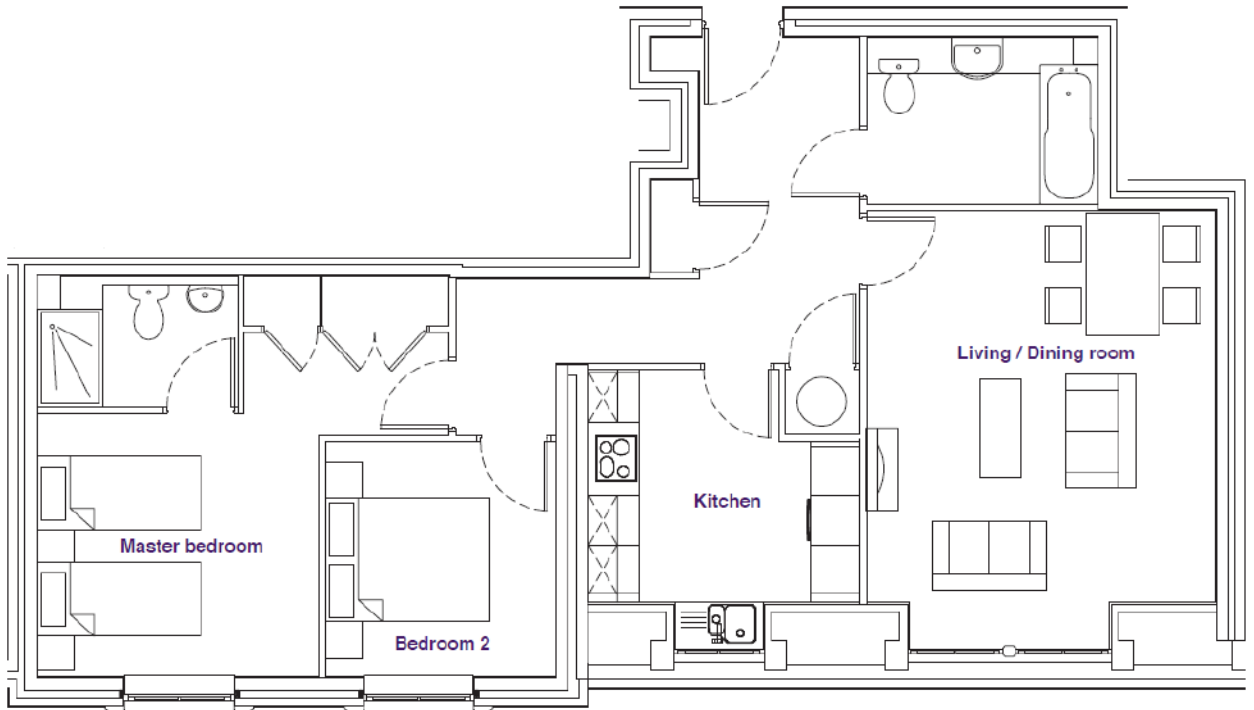
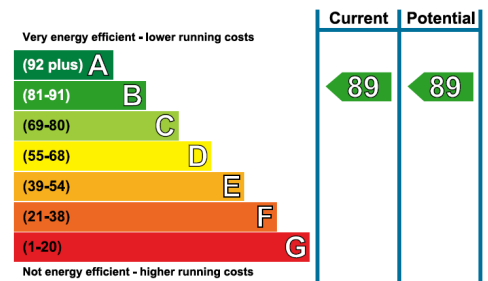


# Audley Inglewood

18 Inglewood House  
Two bedroom third floor apartment



Internal Measurements	Metric (m)	Imperial (ft)
Kitchen	3.30m x 2.80m	10'10" x 9'2"
Living/dining room	4.25m x 4.80m	13'11" x 15' 9"
Master bedroom	4.90m x 3.45m	16'1" x 11'4"
Bedroom two	2.80m x 2.80m	9'2" x 9'2"
Total Sq.Ft 825		



Audley Inglewood  
Templeton Road, Kintbury, Hungerford, RG17 9AA  
01488 682 100 [inglewoodsales@audleyvillages.co.uk](mailto:inglewoodsales@audleyvillages.co.uk)  
[www.audleyvillages.co.uk](http://www.audleyvillages.co.uk)

Built in wardrobes in bedrooms have not been included in the overall dimensions.  
Maximum measurements shown. These pages are intended for marketing purposes only.  
Designs vary according to plot and all details should be checked at the Sales office.  
April 2019



# Audley Inglewood

18 Inglewood House  
Two bedroom third floor apartment



## Two bedroom third floor apartment



A charming bright apartment quietly positioned in the main house with views over Inglewood's lovely gardens. The apartment enjoys a generous reception room with a feature fireplace and ample space for dining, complemented by a well-proportioned kitchen, both off the elegant hall. The bedrooms lead off the hall with the master having fitted wardrobes and an en suite shower room.



### Property specifications

- Bright living/dining room overlooking the gardens
- Separate fully fitted SieMatic kitchen
- Master bedroom with en suite shower room and fitted wardrobes
- Guest bedroom and family bathroom
- Easy access to all of Inglewood's facilities



### Guide Price **£450,000** (other fees apply)

Monthly management fee £768.67  
Bistro credit £59.13  
Annual Ground rent £250

Viewing by appointment with the sales office.

Audley Inglewood  
Templeton Road, Kintbury, Hungerford, RG17 9AA  
01488 682 100 [inglewoodsales@audleyvillages.co.uk](mailto:inglewoodsales@audleyvillages.co.uk)  
[www.audleyvillages.co.uk](http://www.audleyvillages.co.uk)

