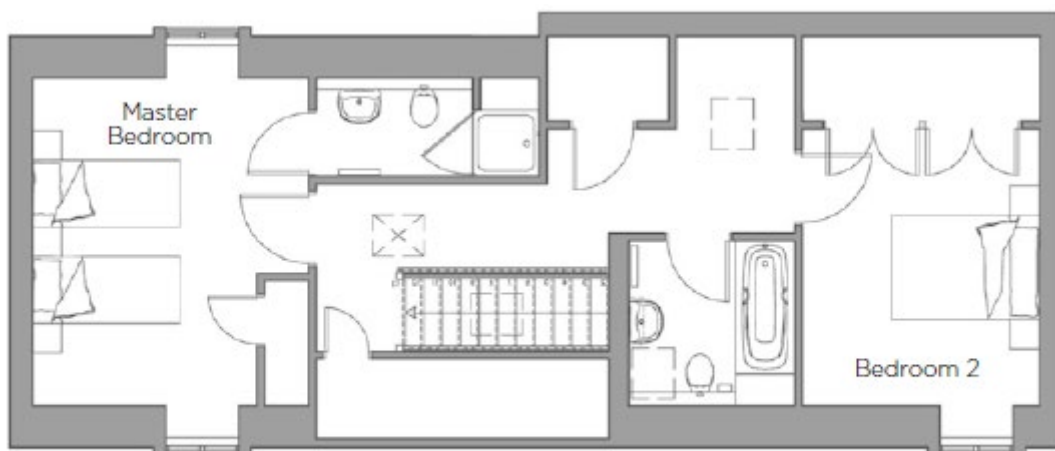


Audley Mote House

18 Garden Walk
2 Bedroom pre-owned cottage

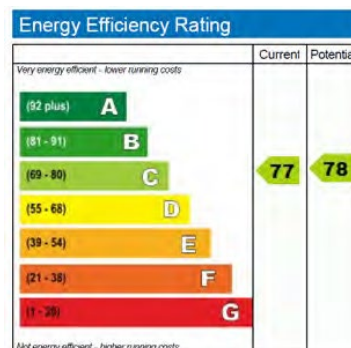


First Floor



Ground Floor

Internal Measurements	Metric (m)	Imperial (ft)
Living Room	5.38 x 4.06	17'8" x 13'4"
Kitchen	5.51 x 3.48	18'1" x 11'5"
Master Bedroom	3.73 x 4.42	12'3" x 14'6"
Bedroom 2	3.73 x 3.20	12'3" x 14'6"
Dining Room	3.84 x 3.05	12'7" x 10'0"



Audley Mote House
Mote Park, Nr Bearsted, Kent, ME15 8NQ
01622 737 279 motesales@audleyvillages.co.uk
www.audleyvillages.co.uk

Built in wardrobes in bedrooms have not been included in the overall dimensions.
Maximum measurements shown. These pages are intended for marketing purposes only.
Designs vary according to plot and all details should be checked at the Sales office.
April 2019

Audley Mote House

18 Garden Walk
2 Bedroom pre-owned cottage



Two bedroom cottage

This delightful two bedroom cottage is located in the picturesque Walled Garden area of Mote House. The dual aspect property enjoys a bright and airy living room and a separate dining room. There is a fully fitted modern kitchen with integrated appliances that offers views over the beautiful Walled Garden. The master bedroom is spacious and is enhanced by good storage facilities and an en suite shower room.



Property specifications

- Large modern kitchen with access to patio area
- Separate dining room
- Spacious living room
- Master bedroom with fitted wardrobe and an en suite shower room
- Guest bedroom and bathroom
- Allocated parking space



Guide Price £525,000 (other fees apply)

Monthly management fee £680
Annual ground rent £250

Viewing by appointment with the sales office.

Audley Mote House
Mote Park, Nr Bearsted, Kent, ME15 8NQ
01622 737 279 motesales@audleyvillages.co.uk
www.audleyvillages.co.uk

