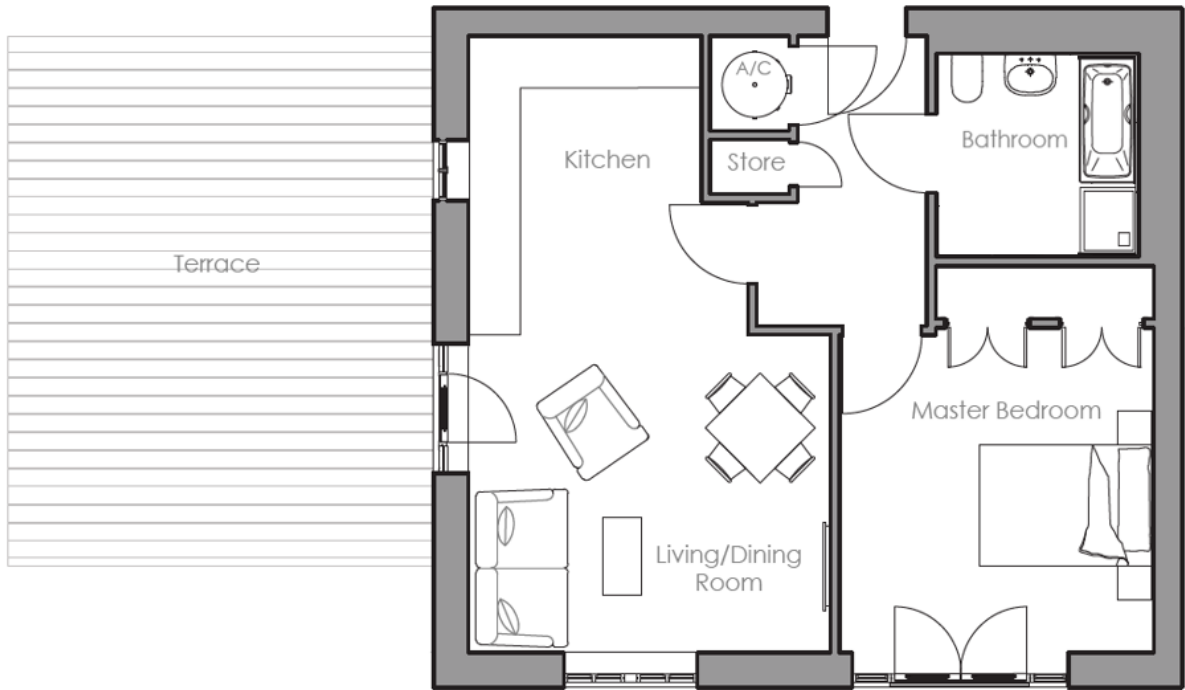
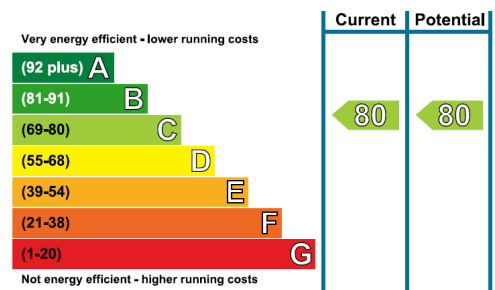


# Audley St Elphin's Park

18 Devonshire Court  
One bedroom second floor 'pre-owned' apartment



Internal Measurements	Metric (m)	Imperial (ft)
Living/Dining Room	4.20m x 3.69m	13'9" x 12'1"
Kitchen	3.47m x 2.70m	11'4" x 8'10"
Master Bedroom	3.68m x 3.65m	12'1" x 12'0"
Terrace	6.14m x 4.93m	20'2" x 16'2"
Total Sq.Ft	613	



Audley St Elphin's Park  
Dale Road South, Darley Dale, Matlock DE4 2RH  
01629 258 001 [stelphinssales@audleyvillages.co.uk](mailto:stelphinssales@audleyvillages.co.uk)

Built in wardrobes in bedrooms have not been included in the overall dimensions.  
Maximum measurements shown. These pages are intended for marketing purposes only.  
Designs vary according to plot and all details should be checked at the Sales office.  
April 2015



# Audley St Elphin's Park

18 Devonshire Court  
One bedroom second floor 'pre-owned' apartment

ONE YEAR  
MANAGEMENT FEE  
INCLUDED



## One Bedroom Apartment

This delightful one bedroom apartment is perfectly situated on the second floor of Devonshire Court to enjoy beautiful dual-aspect views of the local countryside. The property offers an open plan kitchen and living room that combines with the large private roof terrace to create a comfortable living space. The master bedroom is spacious and is enhanced by a Juliet balcony and fitted wardrobes.



## Property specifications

- Second floor apartment with beautiful hillside views
- Modern SieMatic kitchen with integrated appliances
- Living room with a Dimplex optimyst electric fire
- Large private roof terrace
- Master bedroom with Juliet balcony
- Bathroom with a separate walk-in shower
- Lift access
- Allocated parking space



**£210,000** (other fees apply)

*\*One year management fee included\**

Monthly management fee £739.27

Annual ground rent £500

Viewing by appointment with the sales office.

Audley St Elphin's Park  
Dale Road South, Darley Dale, Matlock DE4 2RH  
01629 258 001 [stelphinsales@audleyvillages.co.uk](mailto:stelphinsales@audleyvillages.co.uk)

