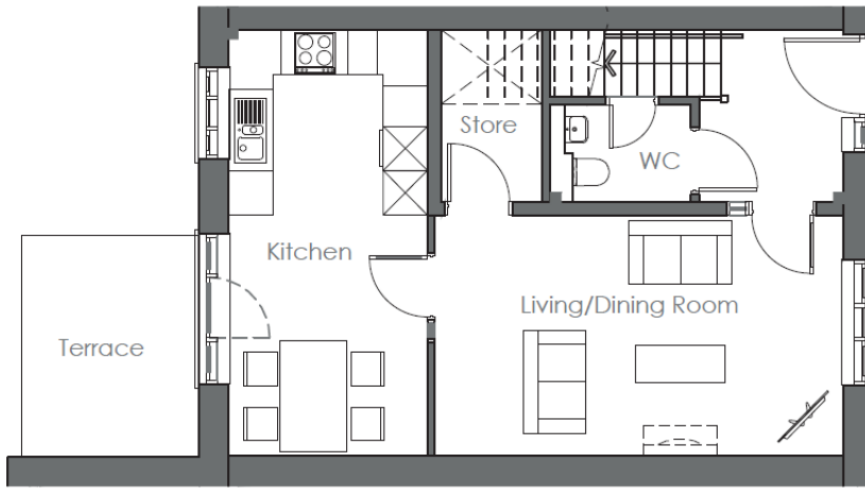
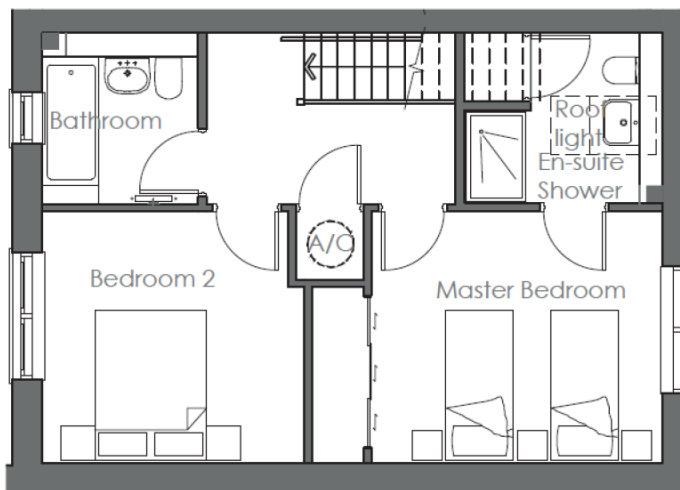


Audley Inglewood

17 Lime Tree Court
2 Bedroom mid-terrace cottage



Ground Floor

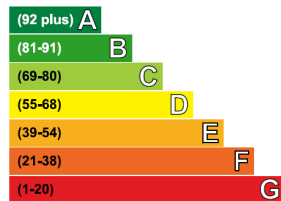


First Floor

Internal Measurements	Metric (m)	Imperial (ft)
Living/Dining Room	5.51m x 3.24m	18'1" x 10'8"
Kitchen	5.74m x 2.69m	18'10" x 8'10"
Master Bedroom	3.9m x 3.36m	12'10" x 11'0"
Bedroom two	3.5m x 3.36m	11'6" x 11'0"
Terrace	3.0m x 2.4m	9'10" x 7'10"

Total Sq.ft 1028

Very energy efficient - lower running costs



Not energy efficient - higher running costs

Current	Potential
80	91

Audley Inglewood
Templeton Road, Kintbury, Hungerford, RG17 9AA
01488 682 100 inglewoodsales@audleyvillages.co.uk
www.audleyvillages.co.uk

Built in wardrobes in bedrooms have not been included in the overall dimensions. Maximum measurements shown. These pages are intended for marketing purposes only. Designs vary according to plot and all details should be checked at the Sales office. April 2019



Audley Inglewood

17 Lime Tree Court
2 Bedroom mid-terrace cottage



2 bedroom mid terrace cottage

This attractive two bedroom mid-terrace cottage has views over the well-kept gardens to the front and a private west facing terrace to the rear. The property boasts a large living/dining area that is perfect for entertaining along with a large master bedroom with fitted wardrobes and en-suite shower.



Property specifications

- Spacious living room
- Kitchen/dining room with direct access to terrace
- Large master bedroom with fitted wardrobes
- En-suite with walk-in wet room shower
- Second bedroom and family bathroom
- Ground floor cloakroom
- Walk in storage room

Guide Price £599,950 (other fees apply)

Monthly management fee £783.07
Bistro credit £57.86
Annual Ground rent £500

Viewing by appointment with the sales office.



Photos for illustration purposes only

Audley Inglewood
Templeton Road, Kintbury, Hungerford, RG17 9AA
01488 682 100 inglewoodsales@audleyvillages.co.uk
www.audleyvillages.co.uk

