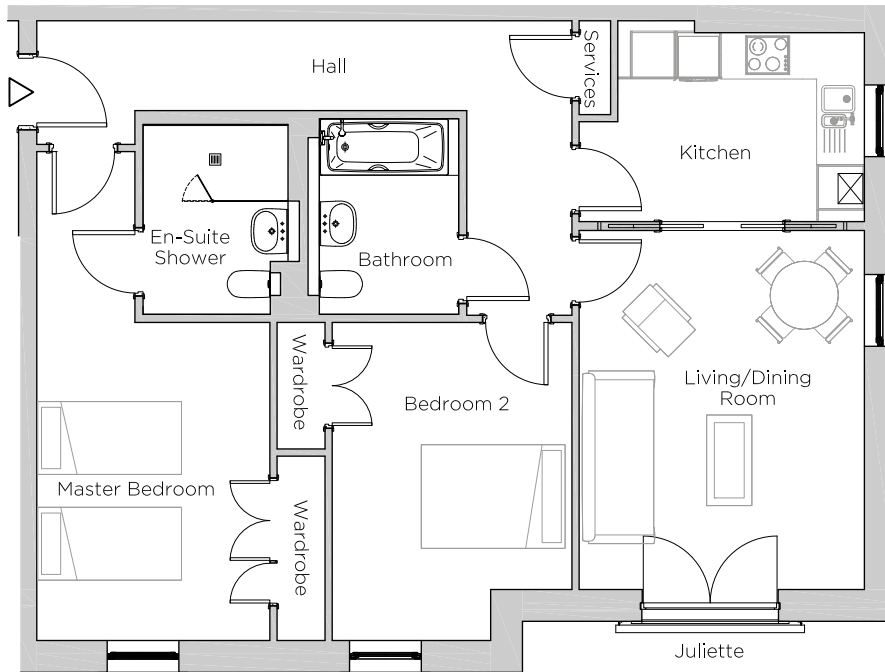


# Audley Ellerslie

16 Austin Court  
Third Floor Apartment  
Plot 76

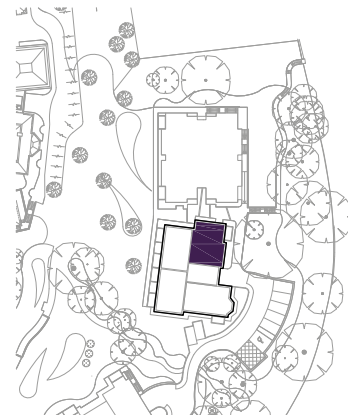


## Internal Measurements

## Metric (m)

## Imperial (ft)

Living/Dining Room	4.75 x 3.78	15'7" x 12'5"
Kitchen	3.26 x 2.50	10'8" x 8'2"
Master Bedroom	4.21 x 3.09	13'10" x 10'2"
Bedroom 2	4.21 x 3.17	13'10" x 10'5"



Audley Ellerslie  
Abbey Road, Malvern, Worcestershire WR14 3HL  
01684 438 400  
[www.audleyvillages.co.uk](http://www.audleyvillages.co.uk)

These floorplans are illustrative and for marketing purposes only. Maximum measurements are shown. Wardrobes not included in the overall room dimensions. Furniture shown to illustrate possible room layouts and not included in sale. Designs vary according to plot. All details should be checked at the Sales Office.

# Audley Ellerslie

16 Austin Court  
Third Floor Apartment  
Plot 76



## 2 bedroom third floor apartment

A two double bedroom apartment with an en-suite shower room to the master bedroom. The dual-aspect living/dining room features a Juliette balcony with east-facing views. The master bathroom and en-suite shower rooms are both fitted with Villeroy & Boch sanitary ware and elegant Hansgrohe fittings.

Property specifications:

- Juliette balcony in the living/dining room with views to the east
- Fitted wardrobes to both bedrooms
- En-suite shower-room to master bedroom
- SieMatic kitchen with integrated appliances

Audley Ellerslie  
Abbey Road, Malvern, Worcestershire WR14 3HL  
01684 438 400  
[www.audleyvillages.co.uk](http://www.audleyvillages.co.uk)

