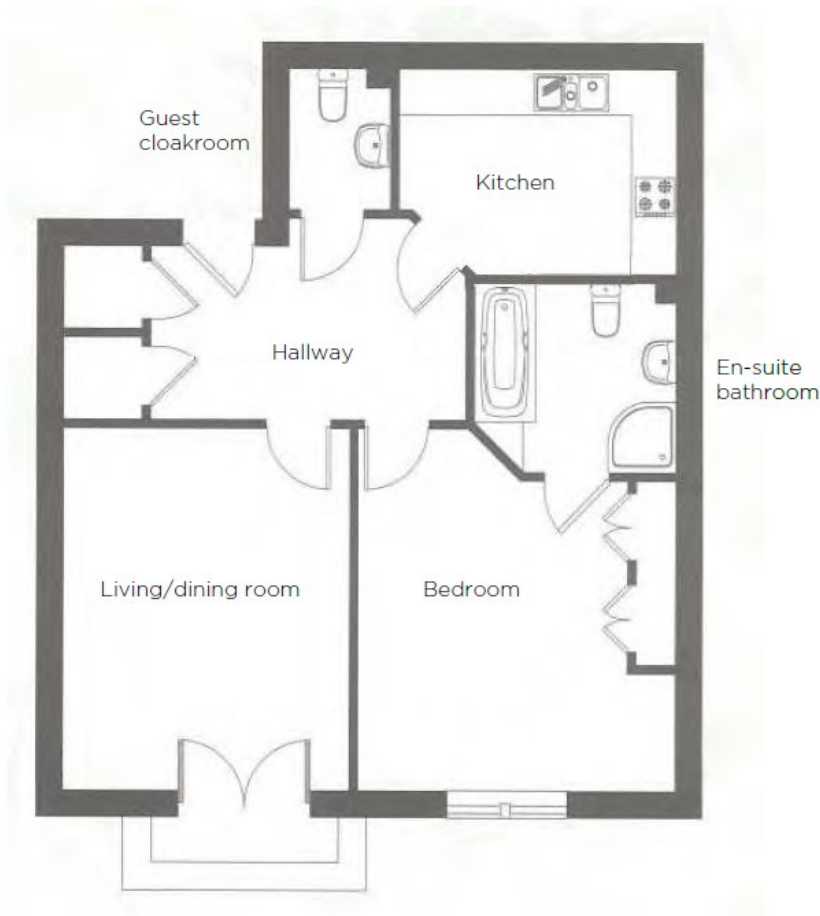
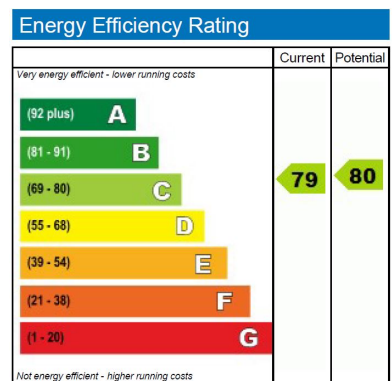


# Audley Clevedon

15 Elmsley Lodge  
One bedroom first floor pre-owned apartment



Internal Measurements	Metric (m)	Imperial (ft)
Living/Dining room	4.60m x 3.60m	15'5" x 12'0"
Kitchen	3.60m x 2.60m	11'9" x 8'7"
Master Bedroom	4.10m x 4.70m	13'7" x 15'5"



Audley Clevedon  
Ben Rhydding Drive, Ben Rhydding, Ilkley, LS29 8AQ  
01943 601 964 [clevedonsales@audleyvillages.co.uk](mailto:clevedonsales@audleyvillages.co.uk)  
[www.audleyvillages.co.uk](http://www.audleyvillages.co.uk)

Built in wardrobes in bedrooms have not been included in the overall dimensions. Maximum measurements shown. These pages are intended for marketing purposes only. Designs vary according to plot and all details should be checked at the Sales office. July 2015



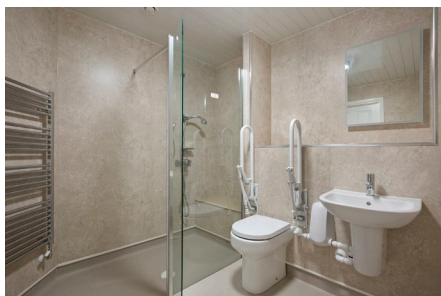
# Audley Clevedon

15 Elmsley Lodge  
One bedroom first floor pre-owned apartment



## One bedroom first floor apartment

This one bedroom first floor apartment has a separate kitchen and a large south-facing living/dining room that leads onto a small balcony. The master bedroom is enhanced by fitted wardrobes and an en suite bathroom with disabled usage fittings. The property is centrally located within Elmsley lodge to provide ease for home deliveries, while being close to Clevedon House, home to the Audley Club with amenities including a restaurant, bar, pool, gym and hairdressers.



### Property specifications

- South-facing balcony accessed from the living/dining room
- Separate kitchen with integrated appliances
- Master bedroom with an en suite bathroom with disabled usage fittings
- Two large storage cupboards in the hallway
- Guest cloakroom

**Guide Price £310,000** (other fees apply)

Monthly management fee £800.29  
Annual ground rent £500

Viewing by appointment with the sales office.



Audley Clevedon  
Ben Rhydding Drive, Ben Rhydding, Ilkley LS29 8AQ  
01943 601 964 [clevedonsales@audleyvillages.co.uk](mailto:clevedonsales@audleyvillages.co.uk)  
[www.audleyvillages.co.uk](http://www.audleyvillages.co.uk)

