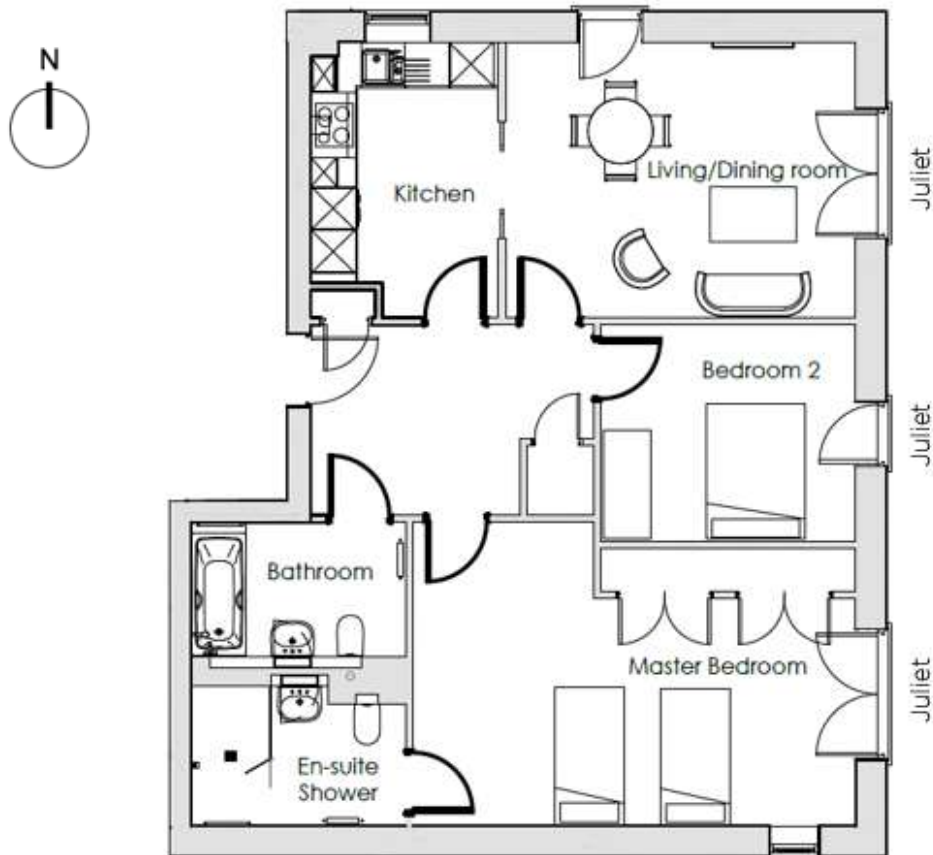


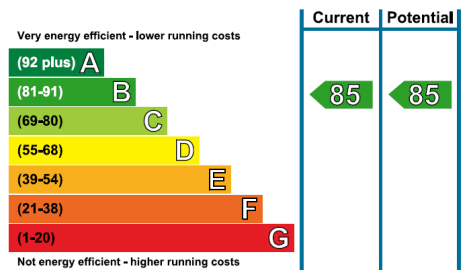
# Audley Ellerslie

12 Southlands

Two bedroom pre-owned ground floor apartment



Internal Measurements	Metric (m)	Imperial (ft)
Living/Dining Room	4.84m x 3.82m	15'10" x 12'6"
Kitchen	3.82m x 2.59m	12'6" x 8'6"
Master Bedroom	6.15m x 3.14m	20'2" x 10'4"
Bedroom 2	3.53m x 2.99m	11'7" x 9'10"
Total Sq.ft 971		



Audley Ellerslie  
 Abbey Road, Malvern, Worcestershire WR14 3HL  
 01684 438 400 [www.audleyretirement.co.uk](http://www.audleyretirement.co.uk)

Built in wardrobes in bedrooms have not been included in the overall dimensions.  
 Maximum measurements shown. These pages are intended for marketing purposes only.  
 Designs vary according to plot and all details should be checked at the Sales office.  
 April 2019



# Audley Ellerslie

12 Southlands

Two bedroom pre-owned ground floor apartment



## Two bedroom ground floor apartment

This charming two bedroom ground floor apartment has stunning views of the local surroundings, which can be truly enjoyed from the spacious living/dining room. The master bedroom is well-appointed and benefits from fitted wardrobes and an en suite shower room. There is a modern SieMatic kitchen with integrated Neff appliances, Corian worktops and Minoli ceramic floor tiles.



## Property specifications

- Master bedroom with an en suite shower room and Villeroy & Boch sanitaryware
- Modern SieMatic kitchen with pocket doors that provide an option for open plan living
- Guest bedroom and bathroom
- Spacious living/dining room with a Juliet balcony
- Car parking available - issued on a permit basis



**£440,000** (other fees apply)

Monthly management fee £839.96  
Annual Ground Rent £500

Viewing by appointment with the sales office.

Audley Ellerslie  
Abbey Road, Malvern, Worcestershire WR14 3HL  
01684 438 400 [www.audleyretirement.co.uk](http://www.audleyretirement.co.uk)

