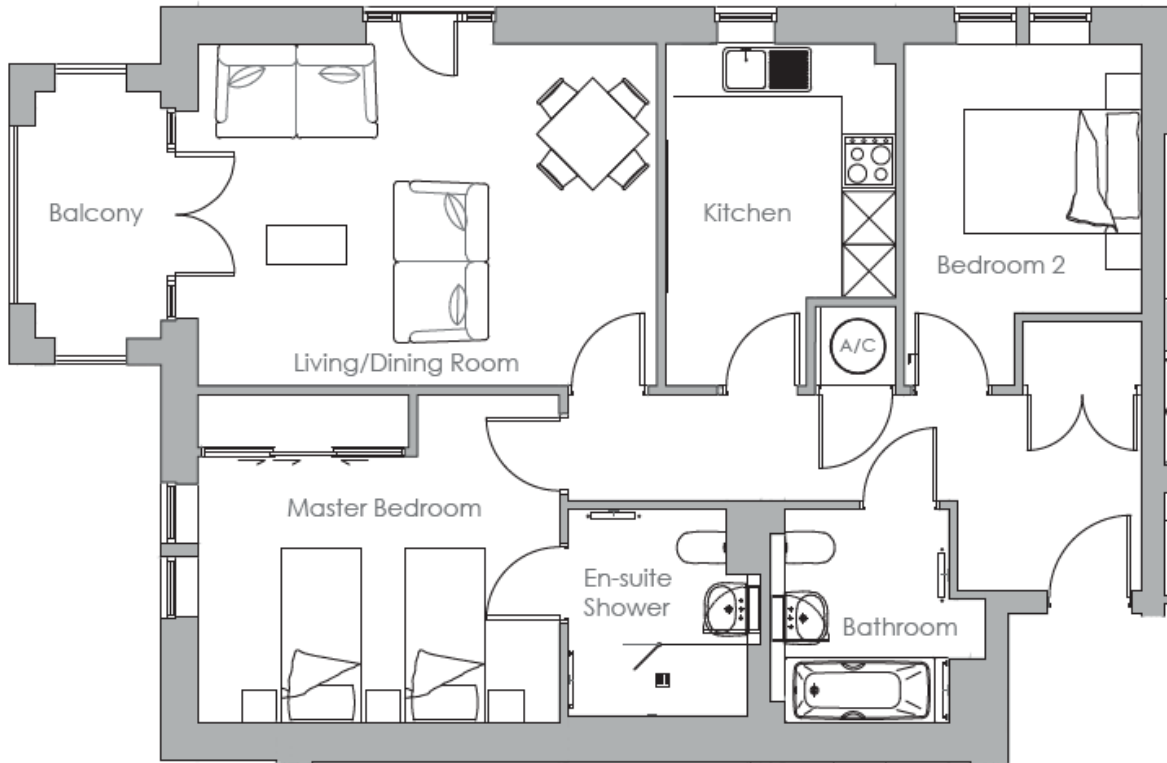


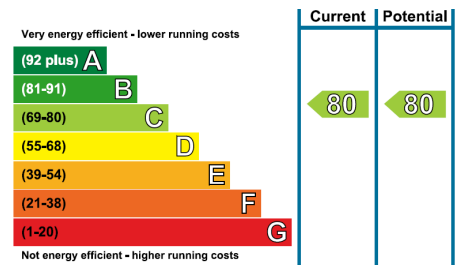
Audley St Elphin's Park

12 Hopkins Court

Two bedroom second floor 'pre-owned' apartment



Internal Measurements	Metric (m)	Imperial (ft)
Living/Dining Room	5.20m x 3.88m	17'1" x 12'9"
Kitchen	3.88m x 2.60m	12'9" x 8'6"
Master Bedroom	4.09m x 3.72m	13'5" x 12'2"
Bedroom Two	3.05m x 2.69m	10'0" x 8'10"
Balcony	2.80m x 1.42m	9'2" x 4'8"
Total Sq.Ft 868		



Audley St Elphin's Park
 Dale Road South, Darley Dale, Matlock DE4 2RH
 01629 733 337 stelphinssales@audleyvillages.co.uk

Built in wardrobes in bedrooms have not been included in the overall dimensions.
 Maximum measurements shown. These pages are intended for marketing purposes only.
 Designs vary according to plot and all details should be checked at the Sales office.
 December 2017



Audley St Elphin's Park

12 Hopkins Court

Two bedroom second floor 'pre-owned' apartment



Two Bedroom Apartment

This charming dual aspect apartment located on the second floor of Hopkins Court, has a well-appointed living/dining room and enjoys views over the Darley Dale hillside from the apartment's private balcony. There is a separate SieMatic kitchen with integrated Neff appliances and a family bathroom with Villeroy & Boch sanitaryware. The master bedroom is spacious and benefits from fitted wardrobes and an en suite shower room.



Property specifications

- Dual aspect living room with private balcony and Juliet balcony
- Large master bedroom with en suite shower room
- Guest bedroom & family bathroom
- Modern SieMatic kitchen with Corian worktops
- Allocated parking space

£325,000 (other fees apply)

12 months management fee included

Monthly management fee £367.36

Annual ground rent £500

Viewing by appointment with the sales office.

Audley St Elphin's Park
Dale Road South, Darley Dale, Matlock DE4 2RH
01629 733 337 stelphinssales@audleyvillages.co.uk

