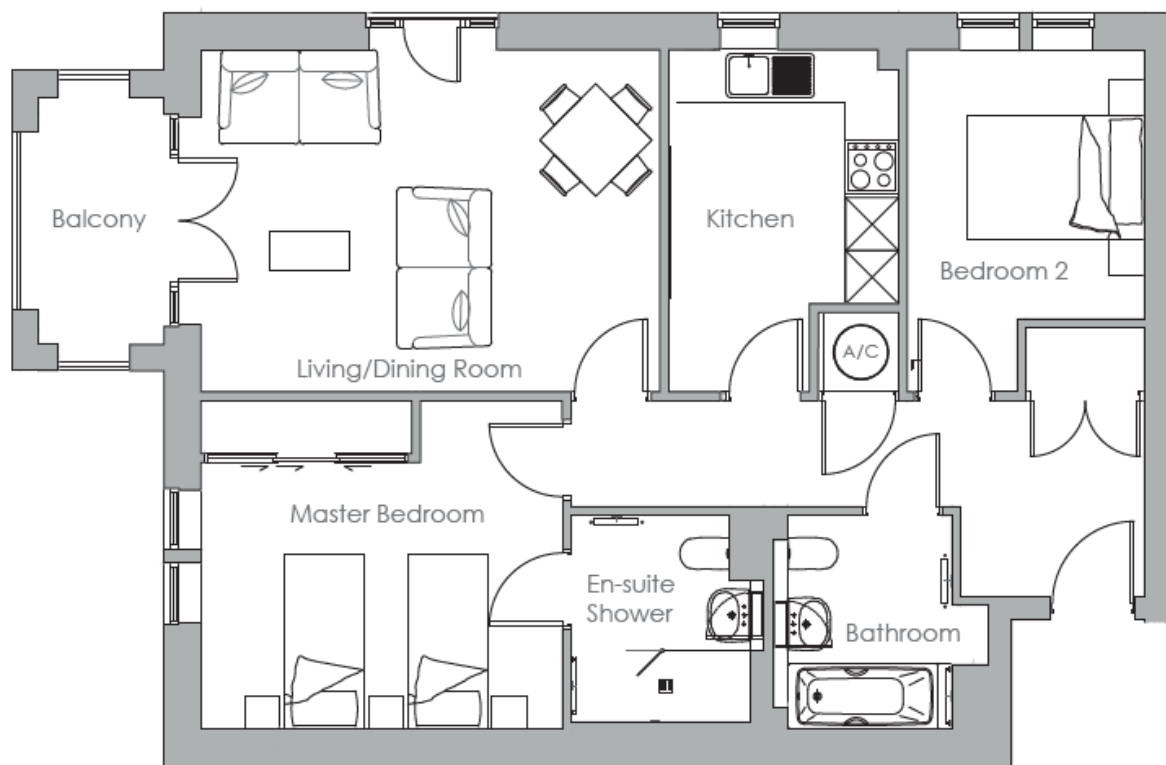


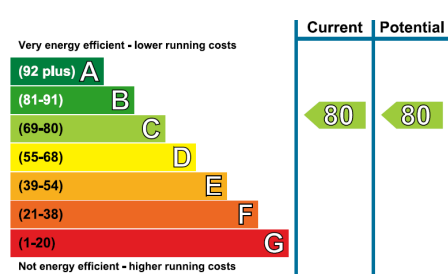
# Audley St Elphin's Park

12 Hopkins Court

Two bedroom second floor 'pre-owned' apartment



Internal Measurements	Metric (m)	Imperial (ft)
Living/Dining Room	5.20m x 3.88m	17'1" x 12'9"
Kitchen	3.88m x 2.60m	12'9" x 8'6"
Master Bedroom	4.09m x 3.72m	13'5" x 12'2"
Bedroom two	3.05m x 2.69m	10'0" x 8'10"
Balcony	2.80m x 1.42m	9'2" x 4'8"
Total Sq.Ft 868		



Audley St Elphin's Park  
 Dale Road South, Darley Dale, Matlock DE4 2RH  
 01629 258 001 stelphinssales@audleyvillages.co.uk

Built in wardrobes in bedrooms have not been included in the overall dimensions.  
 Maximum measurements shown. These pages are intended for marketing purposes only.  
 Designs vary according to plot and all details should be checked at the Sales office.  
 April 2019



# Audley St Elphin's Park

12 Hopkins Court

Two bedroom second floor 'pre-owned' apartment



## Two Bedroom Apartment



This charming dual aspect apartment located on the second floor of Hopkins Court, has a well-appointed living/dining room and enjoys views over the Darley Dale hillside from the apartment's private balcony. There is a separate SieMatic kitchen with integrated Neff appliances and a family bathroom with Villeroy & Boch sanitaryware. The master bedroom is spacious and benefits from fitted wardrobes and an en suite shower room.



### Property specifications

- Dual aspect living room with private balcony and Juliette balcony
- Large master bedroom with en suite shower room
- Guest bedroom & family bathroom
- Modern SieMatic kitchen
- Allocated parking
- Centrally located with easy access to village amenities

**£325,000** (other fees apply)

Monthly management fee £359.45

Annual ground rent £500

Viewing by appointment with the sales office.



Photos for illustration purposes only

Audley St Elphin's Park  
Dale Road South, Darley Dale, Matlock DE4 2RH  
01629 258 001 stelphinssales@audleyvillages.co.uk

