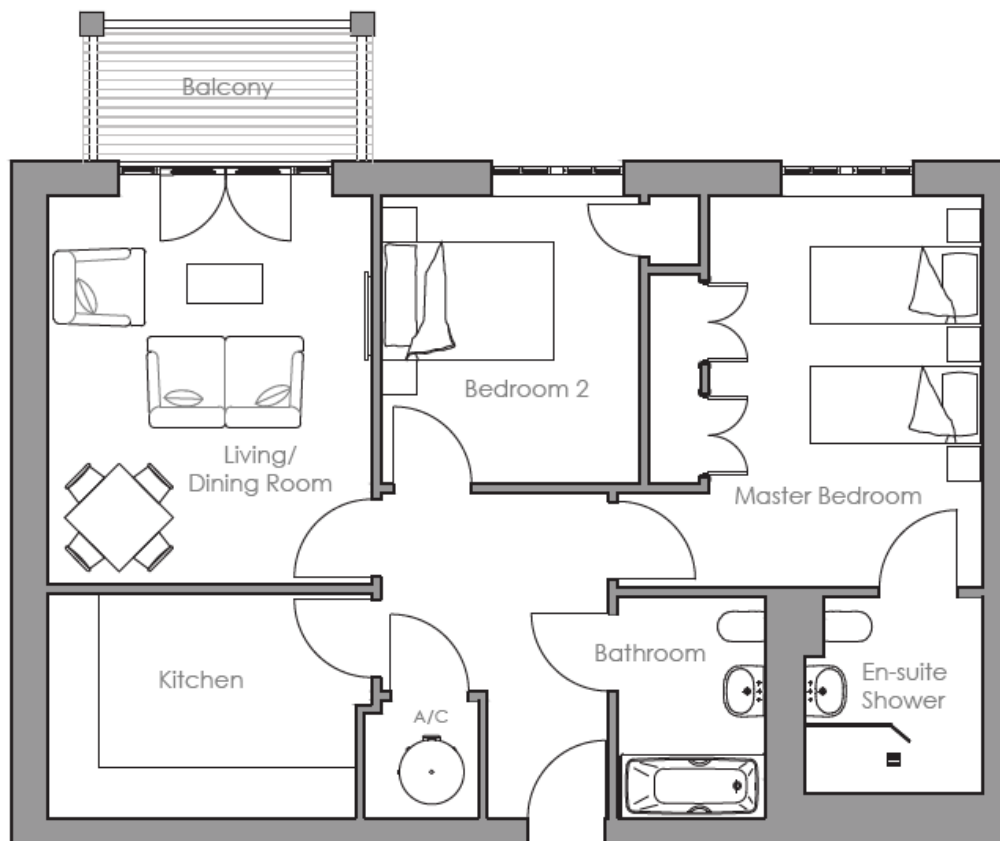
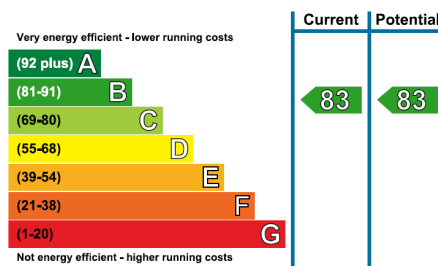


Audley St Elphin's Park

12 Devonshire Court
Two bedroom first floor 'pre-owned' apartment



Internal Measurements	Metric (m)	Imperial (ft)
Living/Dining Room	4.56m x 3.81m	15'0" x 12'6"
Kitchen	3.62m x 2.62m	11'10" x 8'7"
Master Bedroom	4.61m x 3.22m	15'1" x 10'7"
Bedroom Two	3.39m x 3.05m	11'1" x 10'0"
Balcony	3.00m x 1.51m	9'10" x 4'11"
Total Sq.Ft 861		



Audley St Elphin's Park
Dale Road South, Darley Dale, Matlock DE4 2RH
01629 258 001 stelphinssales@audleyvillages.co.uk

Built in wardrobes in bedrooms have not been included in the overall dimensions.
Maximum measurements shown. These pages are intended for marketing purposes only.
Designs vary according to plot and all details should be checked at the Sales office.
Jan 2018



Audley St Elphin's Park

12 Devonshire Court
Two bedroom first floor 'pre-owned' apartment



Two Bedroom Apartment

This lovely two bedroom apartment has been recently redecorated and fitted with new carpets. The property has a spacious living/dining room that offers direct access to the apartment's balcony. The master bedroom is well-appointed and benefits from fitted wardrobes and an en suite shower room. Guest facilities within the apartment include an ample sized guest bedroom and a family bathroom.



Property specifications

- Beautiful hillside views
- Spacious living/dining room with access to balcony
- Separate modern kitchen with Corian work surfaces
- Master bedroom with en suite shower room
- Lift access
- Curtains and light fittings included
- Allocated parking space



£295,000 (other fees apply)

Monthly management fee £750.09
Annual ground rent £500

Viewing by appointment with the sales office.

Audley St Elphin's Park
Dale Road South, Darley Dale, Matlock DE4 2RH
01629 258 001 stelphinssales@audleyvillages.co.uk

