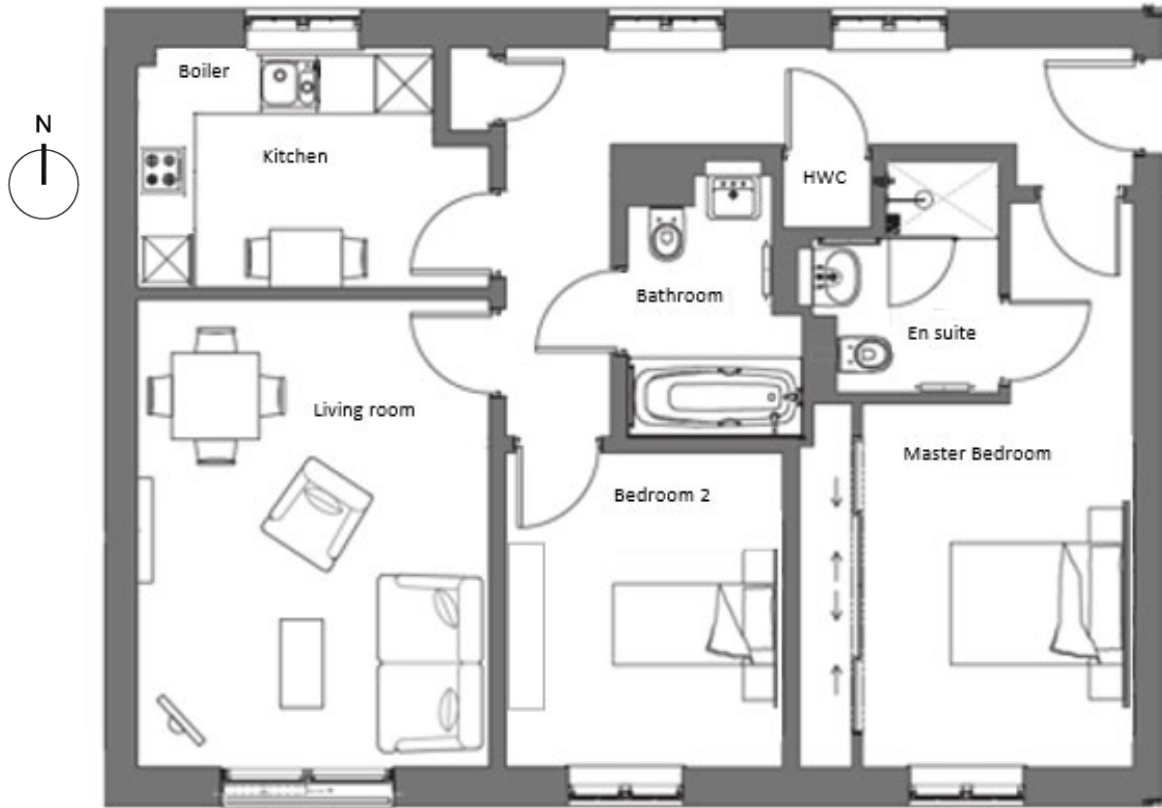
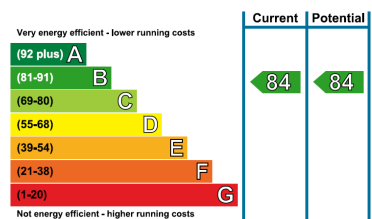
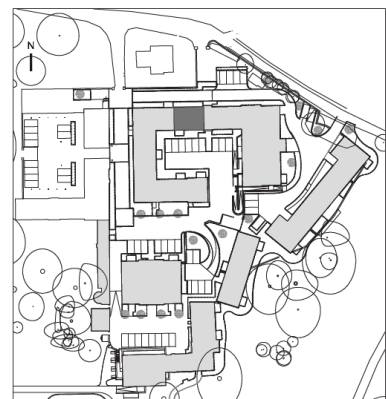


# Audley Mote House

12 Alexander Court  
Two bedroom pre-owned first floor apartment



Internal Measurements	Metric (m)	Imperial (ft)
Living Room	4.84 x 3.64	15'11" x 11'11"
Kitchen	3.65 x 2.48	11'11" x 8'2"
Master Bedroom	3.76 x 2.83	12'4" x 9'3"
En suite shower room	2.40 x 1.94	7'10" x 6'4"
Bedroom 2	3.26 x 2.88	10'8" x 9'5"
Bathroom	2.69 x 1.81	8'10" x 5'11"
Total Sq.Ft	829	



Audley Mote House  
Mote Park, Nr Bearsted, Kent, ME15 8NQ  
01622 737 279 motesales@audleyvillages.co.uk  
www.audleyvillages.co.uk

Built in wardrobes in bedrooms have not been included in the overall dimensions.  
Maximum measurements shown. These pages are intended for marketing purposes only.  
Designs vary according to plot and all details should be checked at the Sales office.  
May 2019



# Audley Mote House

12 Alexander Court  
Two bedroom pre-owned first floor apartment



## Two bedroom apartment

This lovely two bedroom apartment located on the first floor of Alexander Court has a spacious south-facing living room with a Juliet balcony and a fitted electric Calor coal-effect fire in the fireplace. The property enjoys two good-sized bedrooms, including the master which benefits from fitted wardrobes and an en suite shower room. There is a SieMatic kitchen with integrated appliances that are as new. The rear of the property of the property has a view of the woodland to the North of Mote Park.

### Property specifications

- First floor apartment with a sunny outlook
- Spacious, south-facing living room with a Juliet balcony
- Modern SieMatic kitchen with integrated appliances
- Master bedroom with an en suite shower room and luxurious Villeroy & Boch sanitaryware and grab rails
- South-facing guest bedroom with fitted bookcase
- Separate bathroom with shower and grab rails
- Newly fitted Berber carpet throughout
- Well maintained gas boiler with full-service history

**Guide Price £379,950** (other fees apply)

Monthly management fee £777.28  
Annual ground rent £500

Viewing by appointment with the sales office.

Audley Mote House  
Mote Park, Nr Bearsted, Kent, ME15 8NQ  
01622 737 279 motesales@audleyvillages.co.uk  
www.audleyvillages.co.uk

