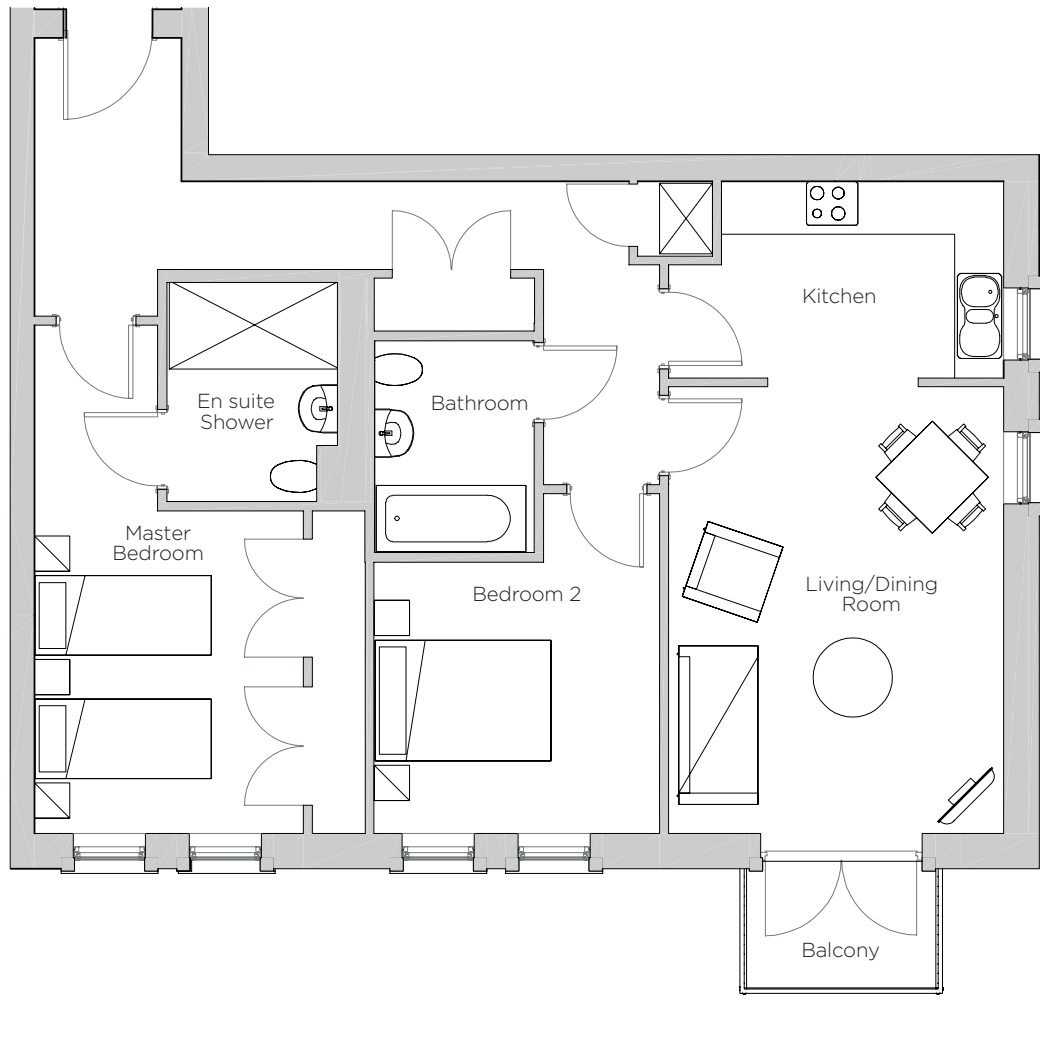


Audley Redwood

11 Whitebeam Court
 First Floor Apartment
 Plot 120



Internal Measurements	Metric (m)	Imperial (ft)
Living/Dining Room	5.07 x 3.81	16'8" x 12'6"
Kitchen	3.81 x 2.23	12'6" x 7'4"
Master Bedroom	3.66 x 3.05	12'0" x 10'0"
Bedroom 2	3.25 x 3.08	10'8" x 10'1"
Balcony (approx)	2.15 x 1.44	7'1" x 4'9"



Audley Redwood
 Beggar Bush Lane, Failand, Bristol BS8 3TG
 01275 217 797
www.audleyvillages.co.uk

These floorplans are illustrative and for marketing purposes only. Maximum measurements are shown. Wardrobes not included in the overall room dimensions. Furniture shown to illustrate possible room layouts and not included in sale. Designs vary according to plot. All details should be checked at the Sales Office.
 4 April 2017



Audley Redwood

11 Whitebeam Court
First Floor Apartment
Plot 120



Two bedroom, first floor apartment

This first floor apartment has a large open plan kitchen/living room with south-facing balcony. The master bedroom has fitted double wardrobes and an en suite with walk-in shower.

Property specifications:

- Open plan luxury SieMatic kitchen
- Living room with south-facing balcony
- Master bedroom with en suite
- Good size second double bedroom
- Villeroy & Boch bathroom
- Access to Audley Club

Audley Redwood
Beggar Bush Lane, Failand, Bristol BS8 3TG
01275 217 797
www.audleyvillages.co.uk

