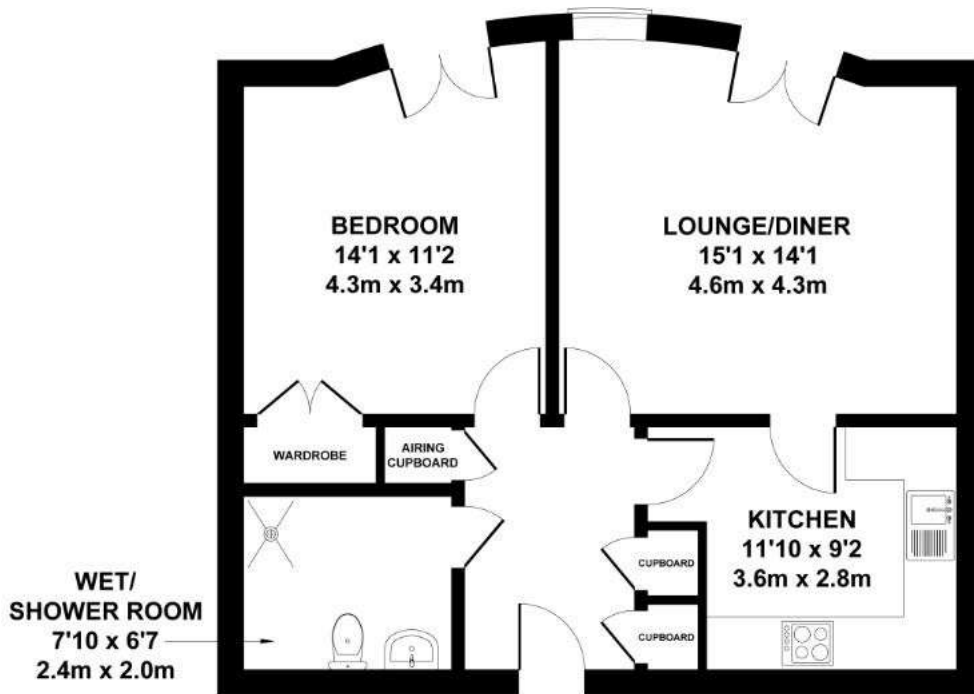


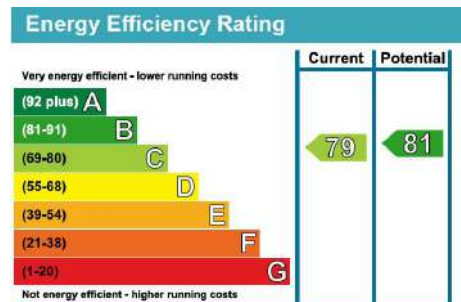
# Audley Willicombe Park

11 Beech Court  
One bedroom pre-owned apartment



APPROX. FLOOR  
AREA 601 SQ.FT.  
(55.9 SQ.M.)

Internal Measurements	Metric(m)	Imperial (ft)
Lounge/Diner	4.4m x 4.3m	14'5 x 14'
Kitchen	3.5m x 2.8m	11'5 x 9'2
Bedroom	4.2m x 3.6m	13'10 x 11'8
Shower room	2.5m x 2.0m	8'1 x 6'6



Audley Willicombe Park  
Willicombe House, Royal Tunbridge Wells, Kent TN2 3UU  
01892 457 002 willicombesales@audleyvillages.co.uk

Built in wardrobes in bedrooms have not been included in the overall dimensions.  
Maximum measurements shown. These pages are intended for marketing purposes only.  
Designs vary according to plot and all details should be checked at the Sales office.  
April 2019

# Audley Willicombe Park

11 Beech Court  
One bedroom pre-owned apartment



## One bedroom apartment

This light and airy one bedroom apartment is located on the second floor of Beech Court. The property has a large lounge/diner and a modern kitchen with integrated electrical appliances. The master bedroom is spacious with fitted wardrobes. There is a shower room and separate airing cupboard.



## Property specifications

- Spacious one bedroom, second floor apartment
- Large lounge/diner with Juliet balcony and separate modern kitchen
- Master bedroom with fitted wardrobes and Juliet balcony
- Wet-room style shower room/WC
- Entrance hallway with useful storage cupboards
- Double glazing and central heating
- Allocated parking



**£280,000** (other fees apply)

Monthly management fee £849.17  
Annual ground rent £100

Viewing by appointment with the sales office.

Audley Willicombe Park  
Willicombe House, Royal Tunbridge Wells, Kent TN2 3UU  
01892 457 002 willicombesales@audleyvillages.co.uk

