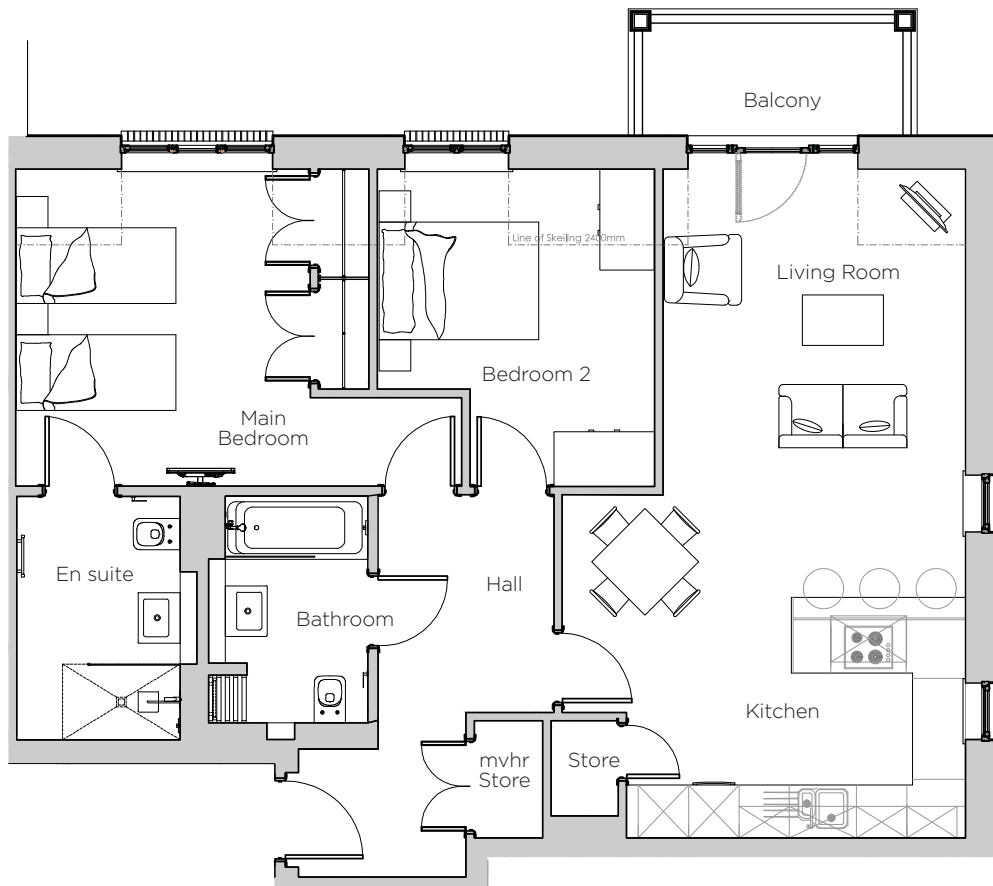


# Audley Stanbridge Earls

Apartment 09 (Plot L09)  
Nightingale Hall, First Floor



Internal Measurements	Metric (m)	Imperial (ft)
Living Room & Kitchen	7.97 x 4.81	26'2" x 15'9"
Main Bedroom	5.32 x 3.78	17'5" x 12'5"
Bedroom 2	3.78 x 3.31	12'5" x 10'10"
Balcony	3.10 x 1.34	10'2" x 4'5"

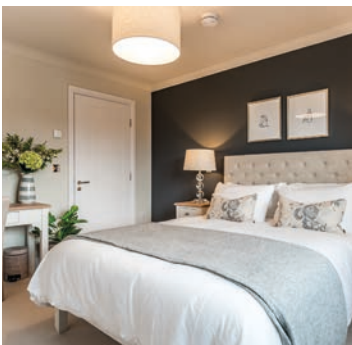
Audley Stanbridge Earls  
Mortimer Drive,  
Romsey SO51 0DW  
01794 278 303  
[www.audleyvillages.co.uk](http://www.audleyvillages.co.uk)

Drawings are preliminary and may be subject to change pending detailed design. Furniture for illustration purposes only. Built-in wardrobes in bedrooms have not been included in the overall dimensions. Maximum measurements shown. These pages are intended for marketing purposes only. Designs vary according to plot and all details should be checked at the Sales Office. May 2019



# Audley Stanbridge Earls

2 bedroom, ground floor apartment



## Property highlights

- Luxury kitchen open plan with living room
- Private balcony
- Main bedroom with en suite walk-in shower
- Villeroy & Boch bathroom
- Second double bedroom
- Hallway storage
- Audley Club membership
- First floor with lift access



Audley Stanbridge Earls  
Mortimer Drive,  
Romsey SO51 0DW  
01794 278 303  
[www.audleyvillages.co.uk](http://www.audleyvillages.co.uk)

CGIs & Photos for illustration purposes only

