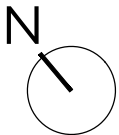
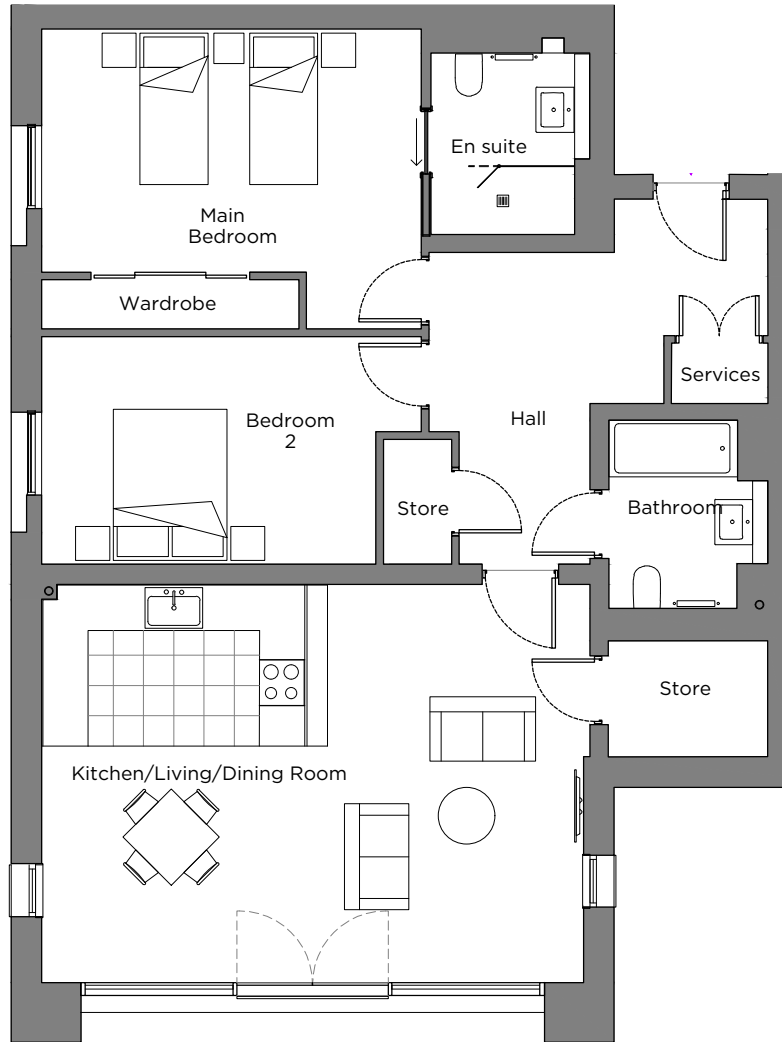


Audley Sunningdale Park

8 Crossley Court (A08)
 First Floor, two bedroom apartment
 Plot 17



Internal Measurements

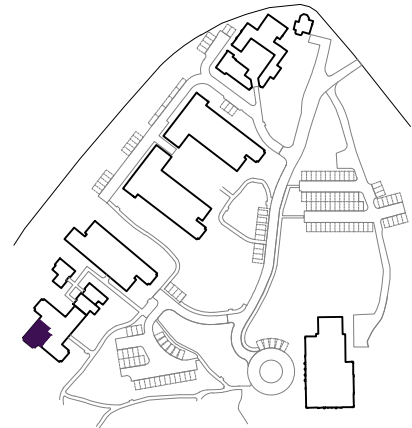
Kitchen/Living/Dining Room
 Main Bedroom
 Bedroom 2

Metric (m)

7.17 x 5.27
 5.01 x 3.35
 4.16 x 2.74

Imperial (ft)

23'6" x 17'3"
 16'5" x 11'0"
 13'8" x 9'0"



Audley Sunningdale Park
 Silwood Road,
 Ascot, Berkshire SL5 0QB
 01344 859 239
www.audleyvillages.co.uk

These floor plans are illustrative and for marketing purposes only. Maximum measurements are shown with longer dimension quoted first. Dimensions are quoted for the main area of the room only. Built-in wardrobes not included in the overall room dimensions. Furniture shown to illustrate possible room layouts and not included in sale. Designs vary according to plot. All details should be checked at the Sales Office.

A: 23 June 2021
 C: 224050



Audley Sunningdale Park

2 bedroom, first floor apartment



Property highlights

- Luxury Villeroy & Boch bathroom and en suite shower room
- Carpeted and decorated throughout
- Lift access to first floor
- Triple-aspect living room
- Ample storage
- Large main bedroom with built-in wardrobes
- Second double bedroom
- Luxury SieMatic kitchen with integrated appliances



Audley Sunningdale Park
Silwood Road,
Ascot, Berkshire SL5 0QB
01344 859 239
www.audleyvillages.co.uk

CGIs & Photos for illustration purposes only

