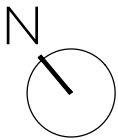
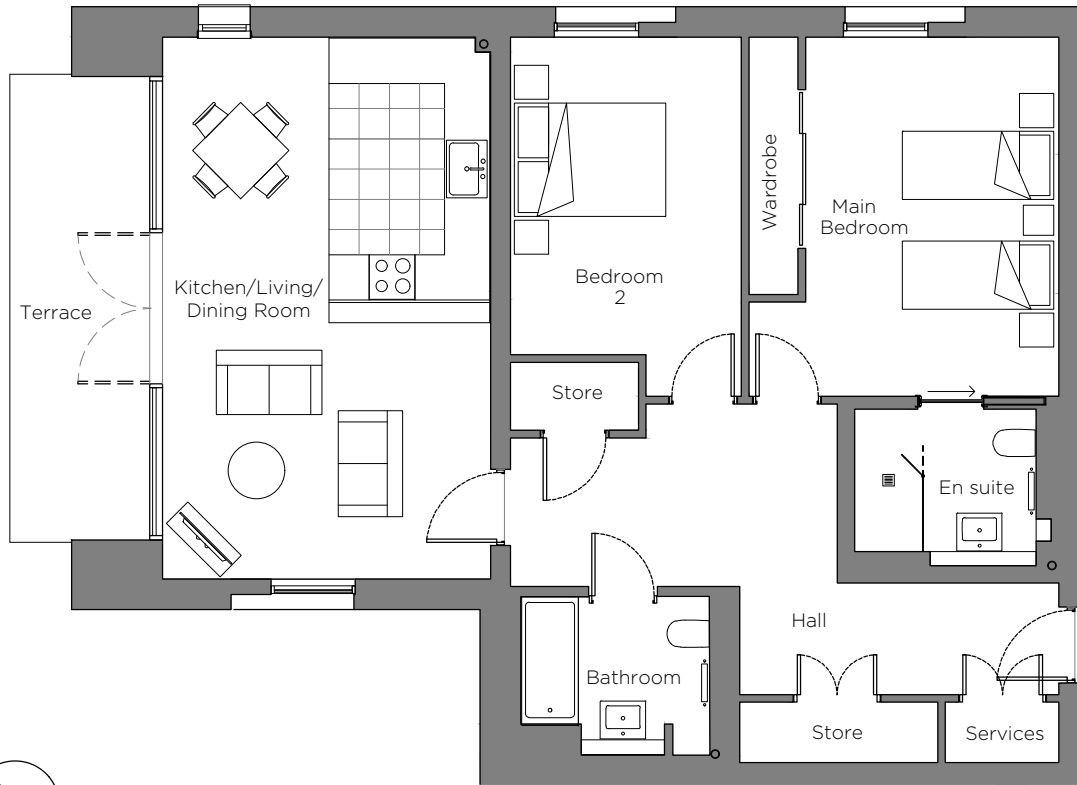
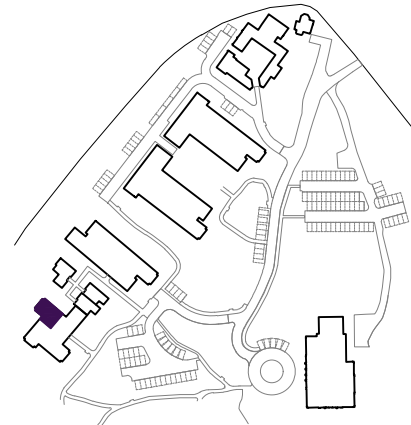


Audley Sunningdale Park

1 Crossley Court (A01)
Ground Floor, two bedroom apartment
Plot 10



Internal Measurements	Metric (m)	Imperial (ft)
Kitchen/Living/Dining Room	7.17 x 4.34	23'6" x 14'3"
Main Bedroom	4.89 x 4.18	16'0" x 13'8"
Bedroom 2	4.18 x 2.97	13'9" x 9'9"
Terrace (approx)	6.19 x 1.85	20'4" x 6'1"



Audley Sunningdale Park
Silwood Road,
Ascot, Berkshire SL5 0QB
01344 859 239
www.audleyvillages.co.uk

These floor plans are illustrative and for marketing purposes only. Maximum measurements are shown with longer dimension quoted first. Dimensions are quoted for the main area of the room only. Built-in wardrobes not included in the overall room dimensions. Furniture shown to illustrate possible room layouts and not included in sale. Designs vary according to plot. All details should be checked at the Sales Office.

A: 23 June 2021
C: 224050



Audley Sunningdale Park

2 bedroom, ground floor apartment



Property highlights

- Open plan kitchen/living room with dining area
- Luxury Villeroy & Boch bathrooms
- Terrace from the living/dining room
- Carpeted and decorated throughout
- SieMatic kitchen with Corian worktops and integrated appliances
- Membership to the Audley Club
- Hallway storage
- Two spacious bedrooms



Audley Sunningdale Park
Silwood Road,
Ascot, Berkshire SL5 0QB
01344 859 239
www.audleyvillages.co.uk

CGIs & Photos for illustration purposes only

