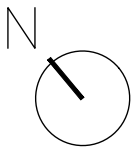
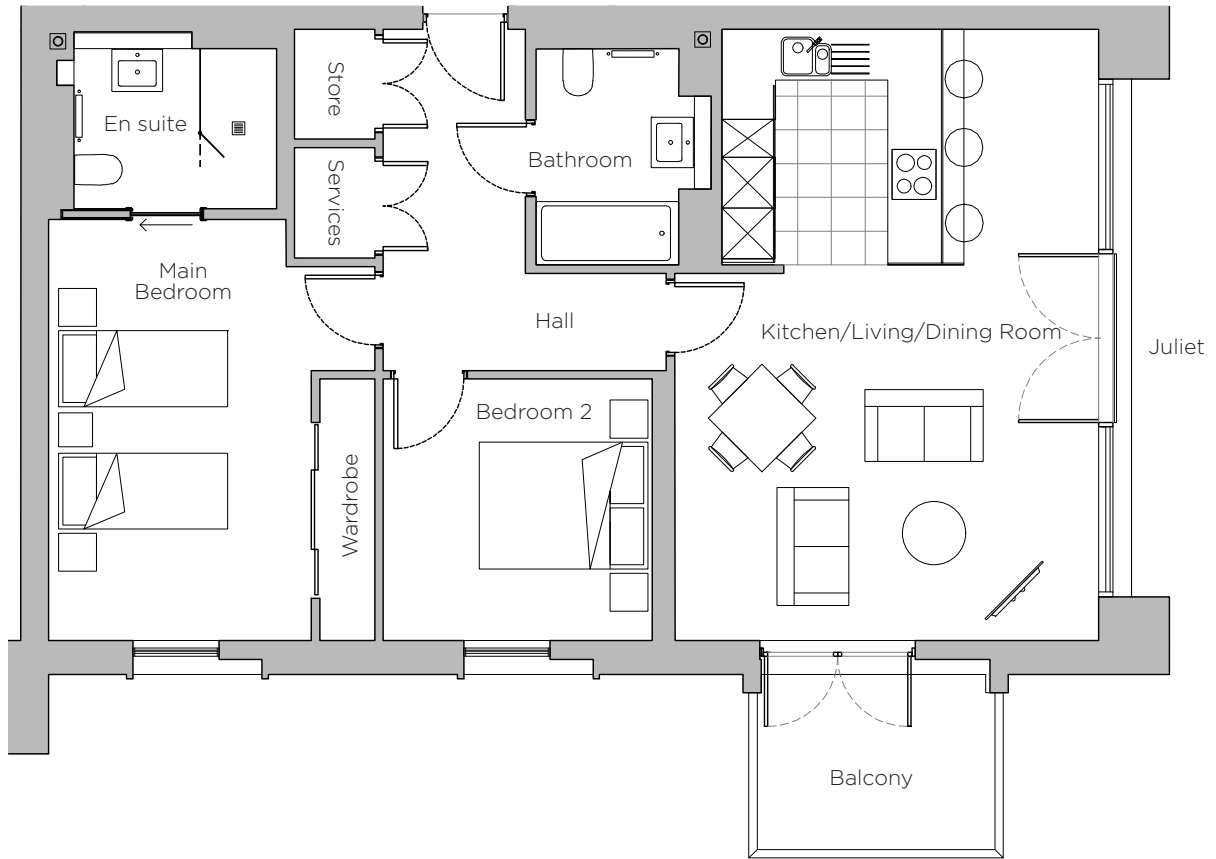
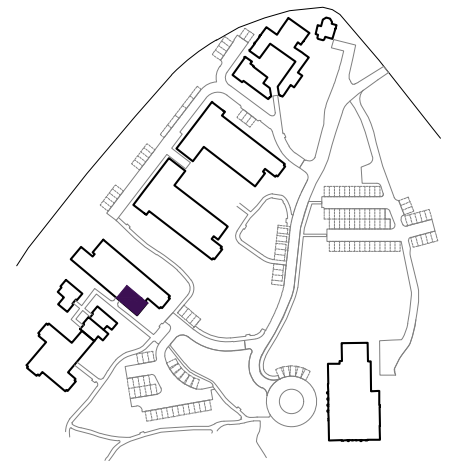


Audley Sunningdale Park

12 Mackenzie Place (B11)
 First Floor, two bedroom apartment
 Plot 24



Internal Measurements	Metric (m)	Imperial (ft)
Living/Dining Room	7.21 x 5.02	23'8" x 16'5"
Main Bedroom	4.98 x 3.11	16'4" x 10'3"
Bedroom 2	3.19 x 3.10	10'5" x 10'2"
Balcony	2.82 x 2.07	9'3" x 6'10"



Audley Sunningdale Park
 Silwood Road,
 Ascot, Berkshire SL5 0QB
 01344 859 239
www.audleyvillages.co.uk

These floor plans are illustrative and for marketing purposes only. Maximum measurements are shown with longer dimension quoted first. Dimensions are quoted for the main area of the room only. Built-in wardrobes not included in the overall room dimensions. Furniture shown to illustrate possible room layouts and not included in sale. Designs vary according to plot. All details should be checked at the Sales Office.

A: 23 June 2021
 C: 224050



Audley Sunningdale Park

2 bedroom, first floor apartment



Property highlights

- Large open plan living/dining room and kitchen with Juliet and south-west facing private balcony
- Modern SieMatic kitchen with integrated appliances
- Spacious main bedroom with fitted wardrobes and en suite shower room
- Guest bathroom with Villeroy & Boch sanitaryware
- Second double bedroom
- First floor with lift access
- Hallway storage
- Membership to Audley Club
- Carpeted and decorated throughout



Audley Sunningdale Park
Silwood Road,
Ascot, Berkshire SL5 0QB
01344 859 239
www.audleyvillages.co.uk

CGIs & Photos for illustration purposes only

