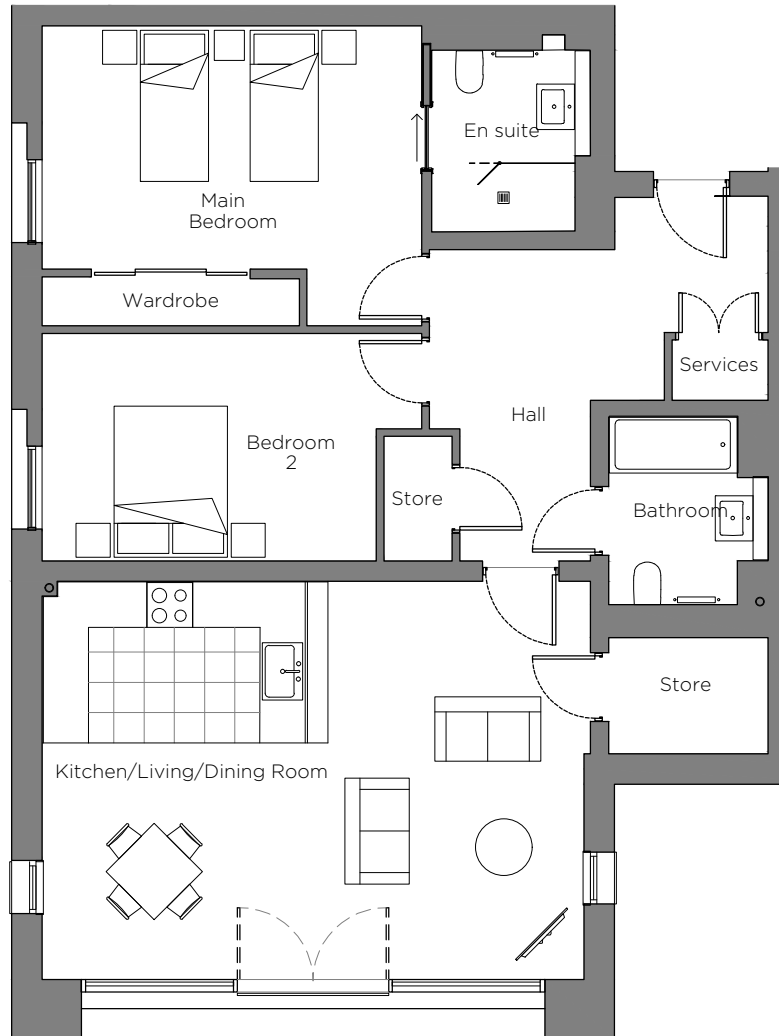


# Audley Sunningdale Park

12 Crossley Court (A08)  
 Second Floor, two bedroom apartment  
 Plot 21



## Internal Measurements

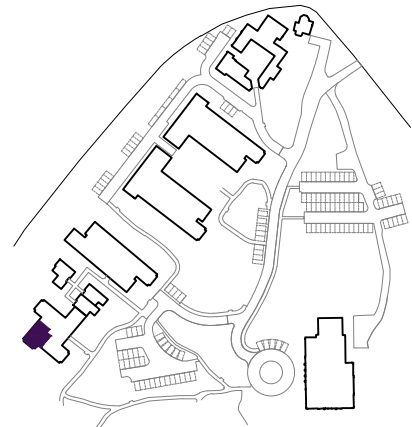
Kitchen/Living/Dining Room  
 Main Bedroom  
 Bedroom 2

## Metric (m)

7.17 x 5.27  
 5.02 x 3.35  
 4.16 x 2.74

## Imperial (ft)

23'6" x 17'3"  
 16'6" x 11'0"  
 13'8" x 9'0"



Audley Sunningdale Park  
 Silwood Road,  
 Ascot, Berkshire SL5 0QB  
 01344 859 239  
[www.audleyvillages.co.uk](http://www.audleyvillages.co.uk)

These floor plans are illustrative and for marketing purposes only. Maximum measurements are shown with longer dimension quoted first. Dimensions are quoted for the main area of the room only. Built-in wardrobes not included in the overall room dimensions. Furniture shown to illustrate possible room layouts and not included in sale. Designs vary according to plot. All details should be checked at the Sales Office.

A: 23 June 2021  
 C: 224050



# Audley Sunningdale Park

2 bedroom, second floor apartment



## Property highlights

- Triple-aspect, new-build apartment
- Luxury Villeroy & Boch bathroom and en suite shower room
- South-west facing views of the landscaped grounds
- Floor to ceiling windows with Juliet balcony in the living/dining room
- Fully integrated SieMatic kitchen with Neff appliances
- Large dedicated store room off the living room
- Guest bathroom
- Carpeted and decorated throughout
- Lift access
- Membership to the Audley Club

Audley Sunningdale Park  
Silwood Road,  
Ascot, Berkshire SL5 0QB  
01344 859 239  
[www.audleyvillages.co.uk](http://www.audleyvillages.co.uk)

CGIs & Photos for illustration purposes only

