

Audley Cooper's Hill

11 Mowbray Hall
Third Floor Apartment
Plot 32



2 bedroom, third floor apartment

A third floor, two double bedroom apartment with a dual-aspect living/dining room with doors opening on to an east-facing balcony which is also accessed via the master bedroom.

The master bedroom has an en suite shower room and built-in wardrobe. The fully equipped SieMatic kitchen comes with Corian worktops and integrated appliances.

Property specifications:

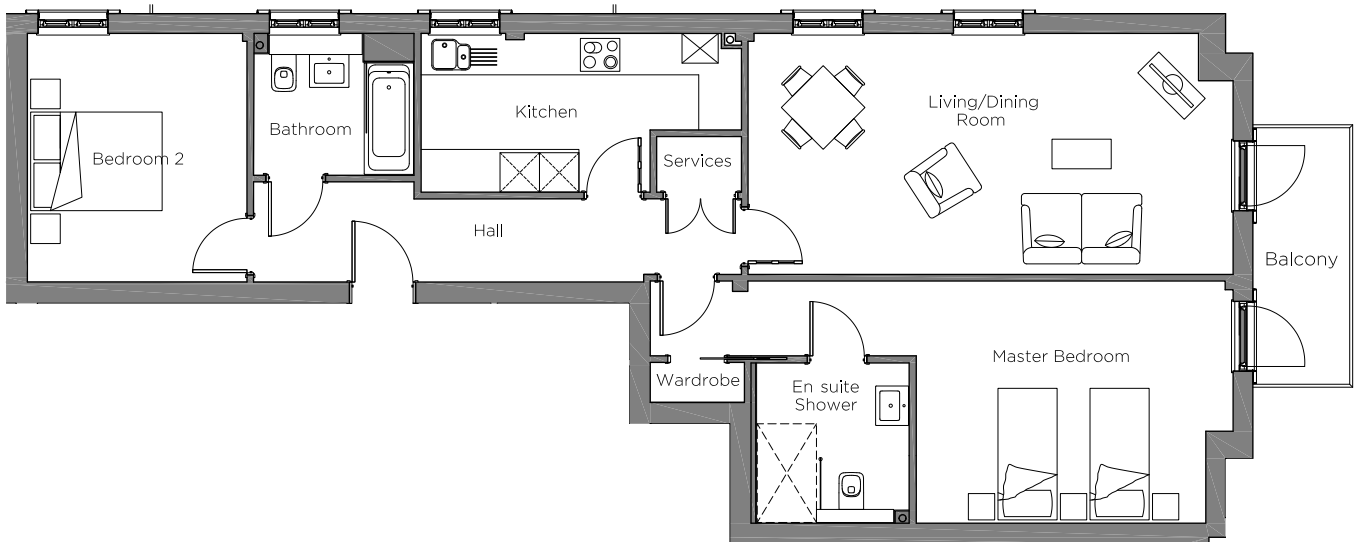
- A stunning third floor, two bedroom, dual-aspect apartment
- Access onto the east-facing terrace from the living room
- Separate fully fitted Siematic kitchen with Corian worktops and integrated Neff appliances
- Luxury Villeroy & Boch en suite shower room and guest bathroom
- Lift access
- Carpeted and decorated throughout

Audley Cooper's Hill
Cooper's Hill Lane,
Englefield Green, Surrey TW20 0YU
01784 557 545
www.audleyvillages.co.uk



Audley Cooper's Hill

11 Mowbray Hall
Third Floor Apartment
Plot 32



Internal Measurements

Living/Dining Room
Kitchen
Master Bedroom
Bedroom 2

Metric (m)

7.37 x 3.66
4.87 x 2.41
4.82 x 3.68
3.78 x 3.34

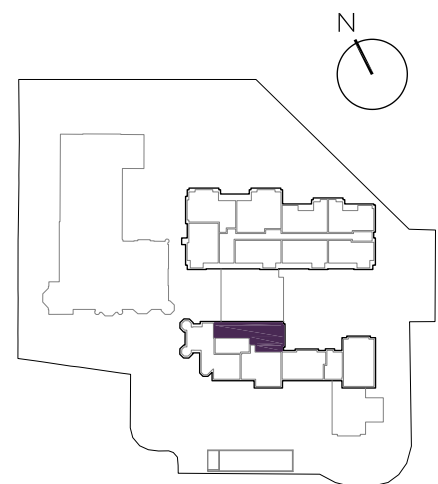
Imperial (ft)

24'2" x 12'0"
16'0" x 7'11"
15'10" x 12'1"
12'5" x 10'11"

Balcony (approx)

3.90 x 1.47

12'10" x 4'10"



Audley Cooper's Hill
Cooper's Hill Lane,
Englefield Green, Surrey TW20 0YU
01784 557 545
www.audleyvillages.co.uk

These floor plans are illustrative and for marketing purposes only. Maximum measurements are shown with longer dimension quoted first. Dimensions are quoted for the main area of the room only. Built-in wardrobes not included in the overall room dimensions. Furniture shown to illustrate possible room layouts and not included in sale. Designs vary according to plot. All details should be checked at the Sales Office.

17 May 2018

