

# Audley St Elphin's Park

2 Robinson Court, Dale Road South, Matlock, DE4 2RR



## Ground Floor 2 Bedroom Apartment

- Quality Siematic fitted kitchen with integrated appliances
- Dual aspect living room with French doors leading on to the terrace with south westerly views
- Master bedroom with fitted wardrobes
- Available now
- Viewing by appointment with the sales office

Price £335,000

Management charge £659.98 per calendar month

Ground rent £250 per annum

Audley St Elphin's Park,

Dale Road South, Darley Dale, Matlock, DE4 2RH

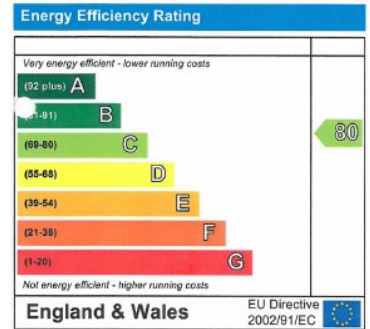
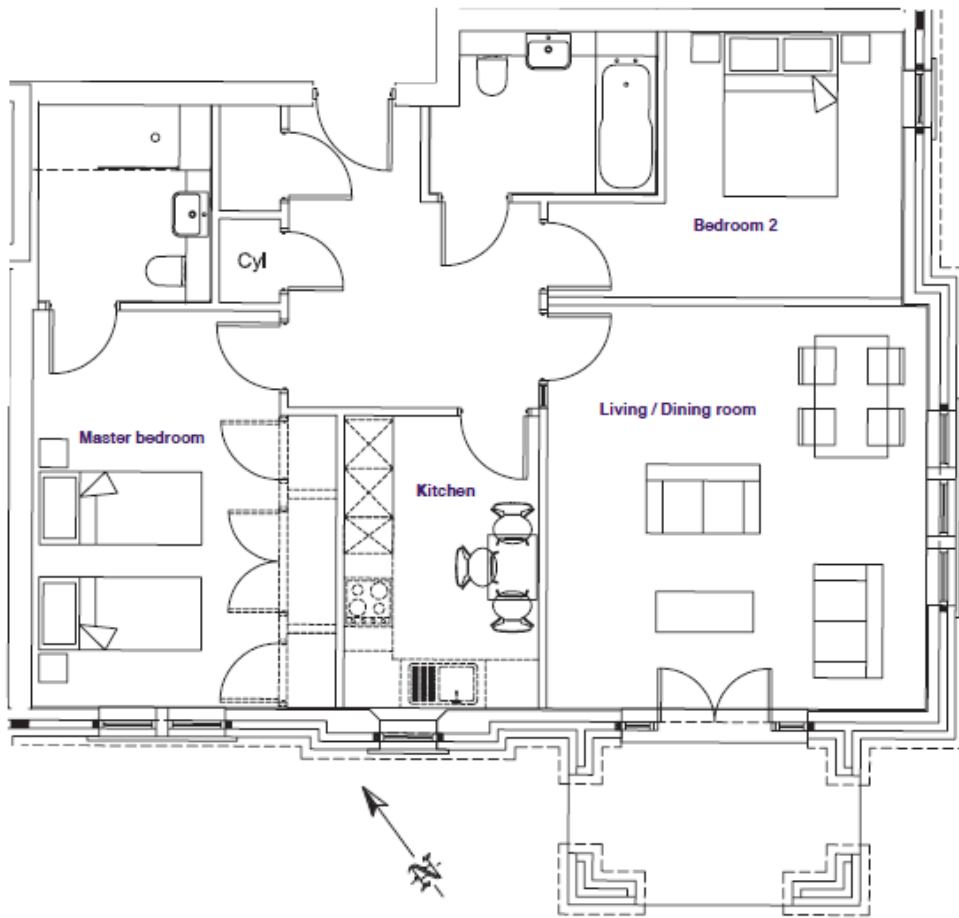
Tel: 01629 733337 - email: [stelphinssales@audleyretirement.co.uk](mailto:stelphinssales@audleyretirement.co.uk)

[www.audleyretirement.co.uk](http://www.audleyretirement.co.uk)



# Audley St Elphin's Park

2 Robinson Court, Dale Road South, Matlock, DE4 2RR



## DIMENSIONS

### Kitchen

2.40m x 3.60m/7'10" x 11'9"

### Living/Dining Room

4.70m x 4.95m/15'5" x 16'2"

### Master Bedroom

3.75m x 4.85m/12'3" x 15'10"

### Second bedroom

2.95m x 3.30m/9'8" x 10'9"

## ABOUT OUR VILLAGE

St Elphin's Park retirement village is set within 14-acres of landscaped grounds, located within the Derbyshire Dales and on the border of the Peak District National Park. This Victorian schoolhouse has been restored, so that now it houses the Audley Club, with its luxury health club, fitness suite, swimming pool, Bistro Bar and the Orangery Restaurant.

## LOCATION

Situated between the towns of Matlock and Bakewell, Audley St Elphin's Park is close to Chatsworth house and Bakewell, home of the famous Bakewell pudding. This wonderful, bustling market town is at the heart of the Peak District and is a delight to visit, with many lovely shops, restaurants and picturesque walks along the river.



Audley St Elphin's Park, Dale Road South, Darley Dale, Matlock, DE4 2RH

Tel: 01629 733337 - email: [stelphinssales@audleyretirement.co.uk](mailto:stelphinssales@audleyretirement.co.uk)

[www.audleyretirement.co.uk](http://www.audleyretirement.co.uk)