

25 Willicombe Park



25 Willicombe Park

Two bedroom cottage

This modern two bedroom terraced cottage has accommodation over two floors. The recently fitted kitchen has integrated appliances and room for a breakfast table. The large L-shaped lounge/dining room has patio doors leading to the rear secluded south-facing garden terrace. The main bedroom benefits from an en-suite WC in addition to the main bathroom and ground floor cloakroom.

Property specification

- Spacious two bedroom cottage
- Quiet location within a short walk to the main house and facilities
- Lounge/dining room with direct access to private south-facing patio garden
- Main bedroom with fitted wardrobes and ensuite WC
- Several useful storage cupboards
- Parking nearby
- Vacant possession
- Guest suite available for family and friends

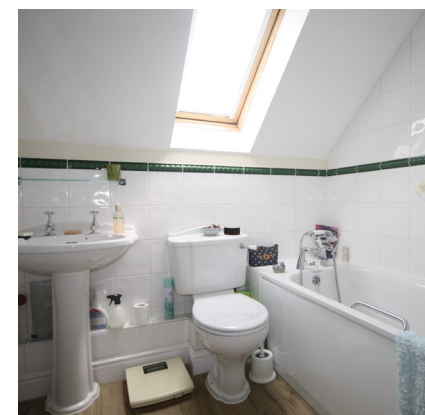
£410,000 (other fees apply)

Monthly management fee: £854.21

Annual ground rent: £100

Viewing by appointment with the sales office.

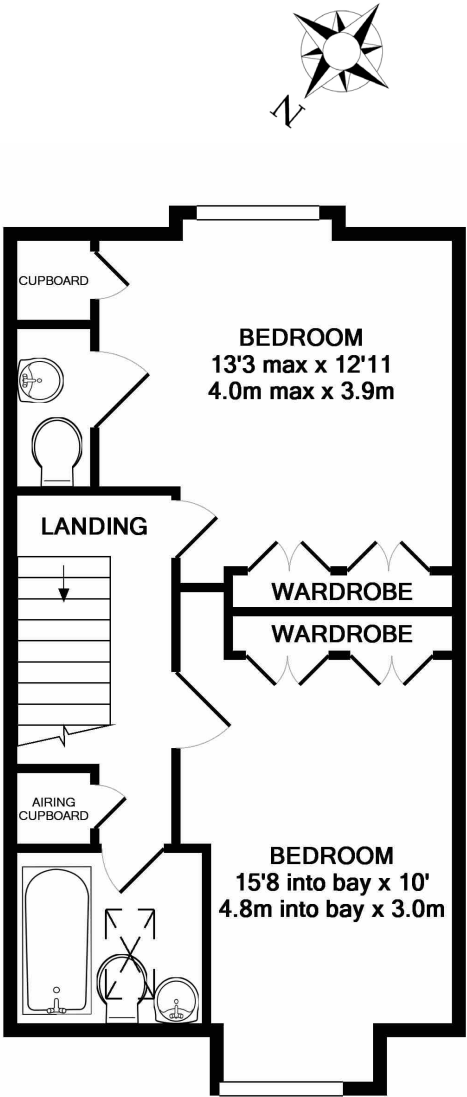
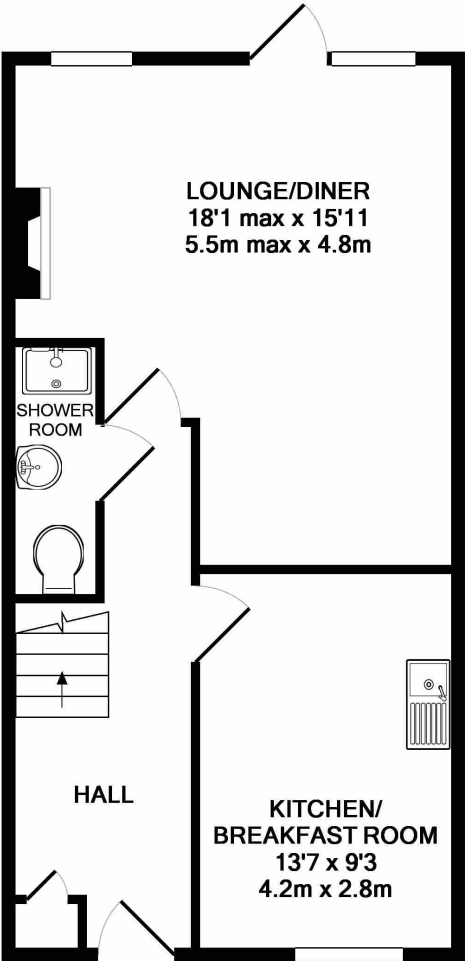
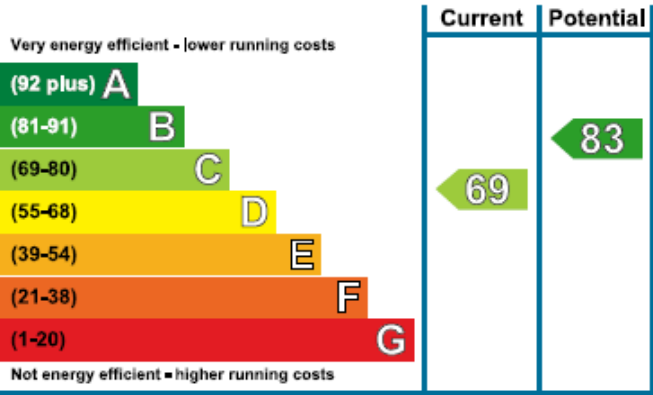
Audley Willicombe Park
01892 457 002
willicombesales@audleyvillages.co.uk



25 Willicombe Park

Internal Measurements	Metric (m)	Imperial (ft)
Lounge/Diner	5.5 x 4.8	18'1" x 15'11"
Kitchen	4.2 x 2.8	13'7" x 9'3"
Main Bedroom	4.0 x 3.9	13'3" x 12'11"
Bedroom two	4.8 x 3.0	15'8" x 10'0"
Total Sq. Ft: 1310		

Built in wardrobes in bedrooms have not been included in the overall dimensions. Maximum measurements shown.



These pages are intended for marketing purposes only. Designs vary according to plot and all details should be checked at the Sales office. July 2022.

