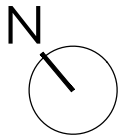
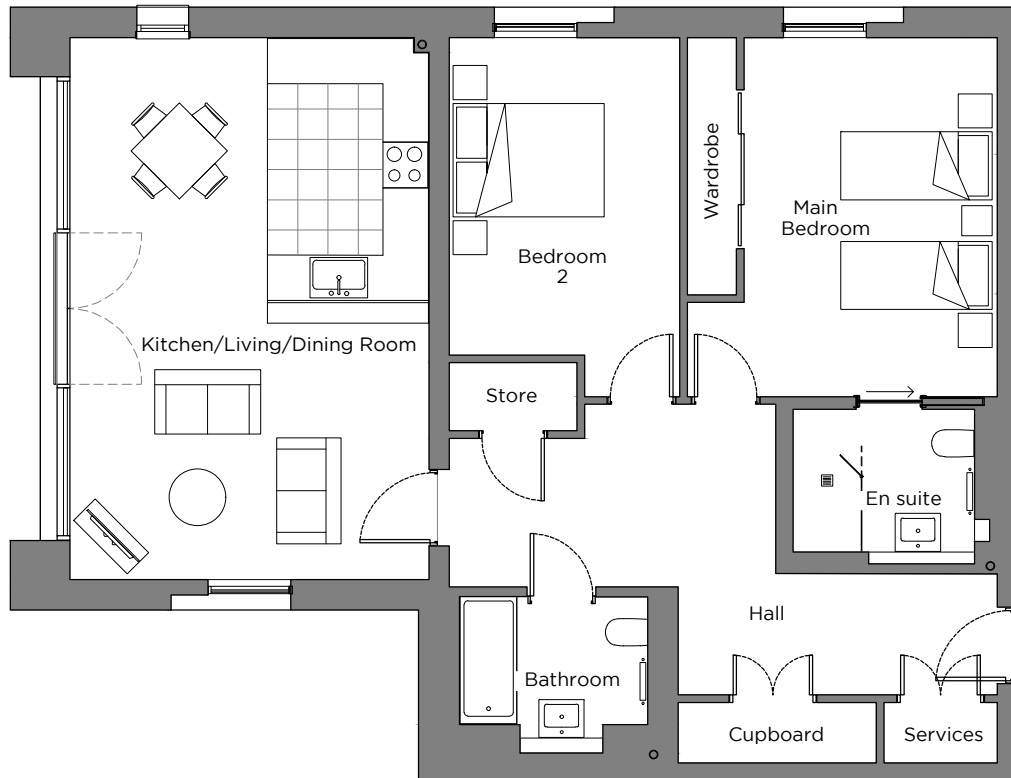


# Audley Sunningdale Park

9 Crossley Court (A09)  
 Second Floor, two bedroom apartment  
 Plot 18

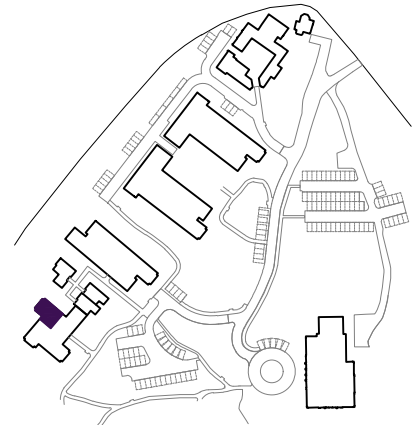


## Internal Measurements

## Metric (m)

## Imperial (ft)

Kitchen/Living/Dining Room	7.17 x 4.75	23'6" x 15'7"
Main Bedroom	4.89 x 3.28	16'0" x 10'9"
Bedroom 2	4.18 x 2.97	13'9" x 9'9"



Audley Sunningdale Park  
 Silwood Road,  
 Ascot, Berkshire SL5 0QB  
 01344 859 239  
[www.audleyvillages.co.uk](http://www.audleyvillages.co.uk)

These floor plans are illustrative and for marketing purposes only. Maximum measurements are shown with longer dimension quoted first. Dimensions are quoted for the main area of the room only. Built-in wardrobes not included in the overall room dimensions. Furniture shown to illustrate possible room layouts and not included in sale. Designs vary according to plot. All details should be checked at the Sales Office.

A: 23 June 2021 C: 224062



# Audley Sunningdale Park

2 bedroom, second floor apartment



## Property highlights

- New-build apartment on the second floor
- Main bedroom with large built-in wardrobe
- Fully integrated SieMatic kitchen with Neff appliances
- Luxury Villeroy & Boch bathroom
- En suite shower room in main bedroom, with space-saving sliding door
- Guest bathroom
- Hallway storage
- Carpeted and decorated throughout
- Membership to the Audley Club



Audley Sunningdale Park  
Silwood Road,  
Ascot, Berkshire SL5 0QB  
01344 859 239  
[www.audleyvillages.co.uk](http://www.audleyvillages.co.uk)

CGIs & Photos for illustration purposes only

