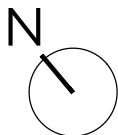
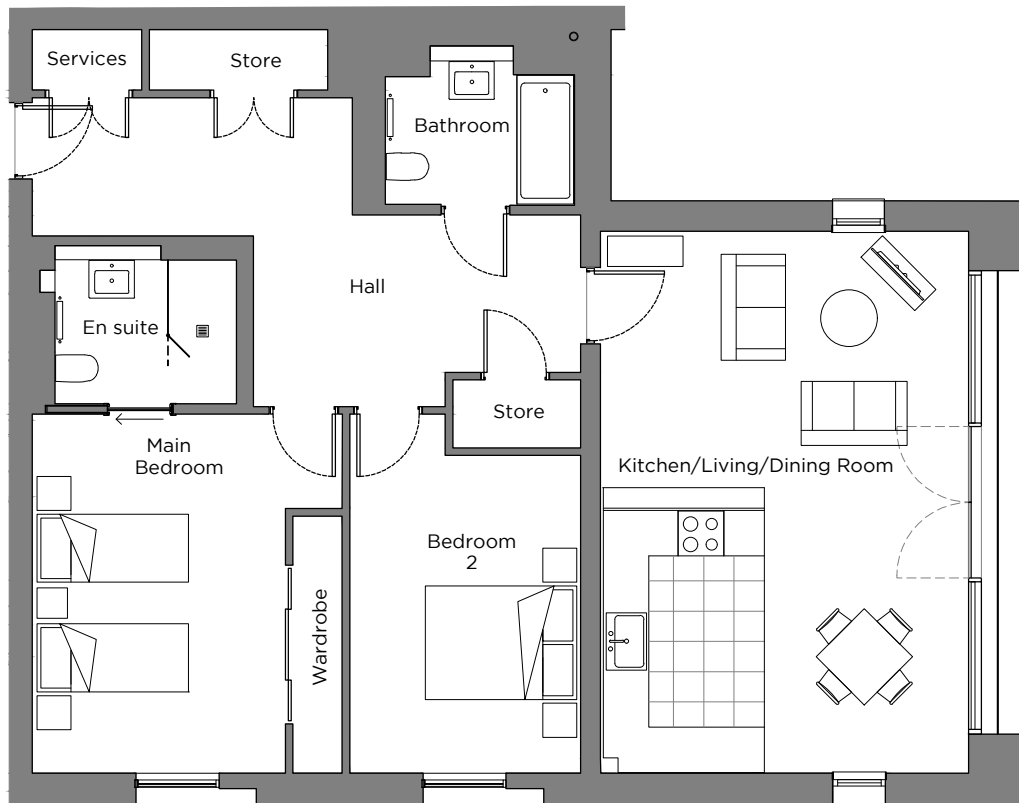


Audley Sunningdale Park

7 Crossley Court (A07)
 First Floor, two bedroom apartment
 Plot 16

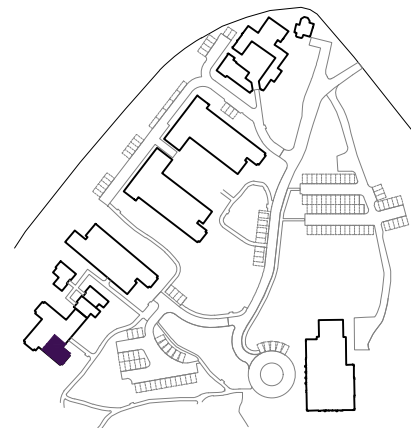


Internal Measurements

Metric (m)

Imperial (ft)

Kitchen/Living/Dining Room	7.17 x 4.87	23'6" x 16'0"
Main Bedroom	4.67 x 3.37	15'4" x 11'1"
Bedroom 2	4.06 x 2.88	13'4" x 9'5"



Audley Sunningdale Park
 Silwood Road,
 Ascot, Berkshire SL5 0QB
 01344 859 239
www.audleyvillages.co.uk

These floor plans are illustrative and for marketing purposes only. Maximum measurements are shown with longer dimension quoted first. Dimensions are quoted for the main area of the room only. Built-in wardrobes not included in the overall room dimensions. Furniture shown to illustrate possible room layouts and not included in sale. Designs vary according to plot. All details should be checked at the Sales Office.

A: 23 June 2021 C: 224062



Audley Sunningdale Park

2 bedroom, first floor apartment



Property highlights

- Open plan kitchen
- Lift access
- Light and airy feel
- Villeroy & Boch en suite and guest bathroom
- Membership to the Audley Club
- Carpeted and decorated throughout
- SieMatic kitchen with Corian worktops and integrated appliances
- Main bedroom with built-in storage and en suite
- Second double bedroom



Audley Sunningdale Park
Silwood Road,
Ascot, Berkshire SL5 0QB
01344 859 239
www.audleyvillages.co.uk

CGIs & Photos for illustration purposes only

