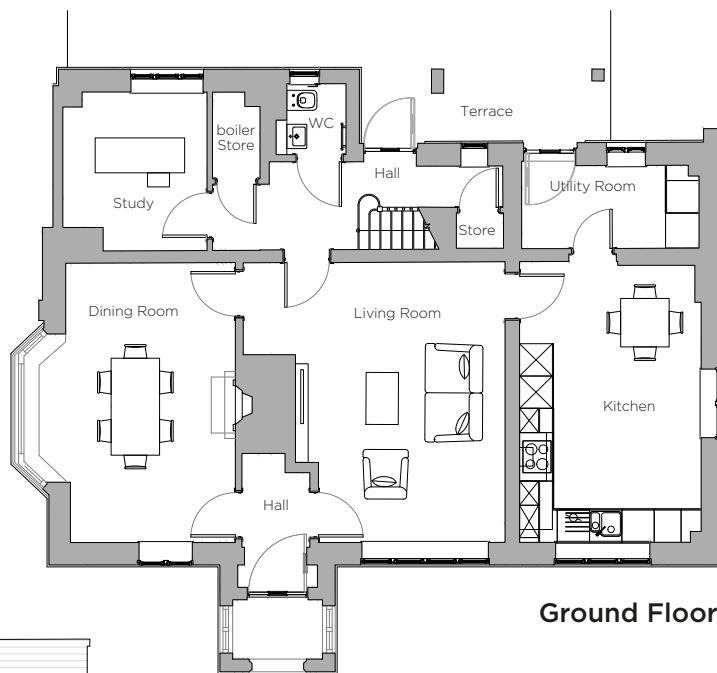
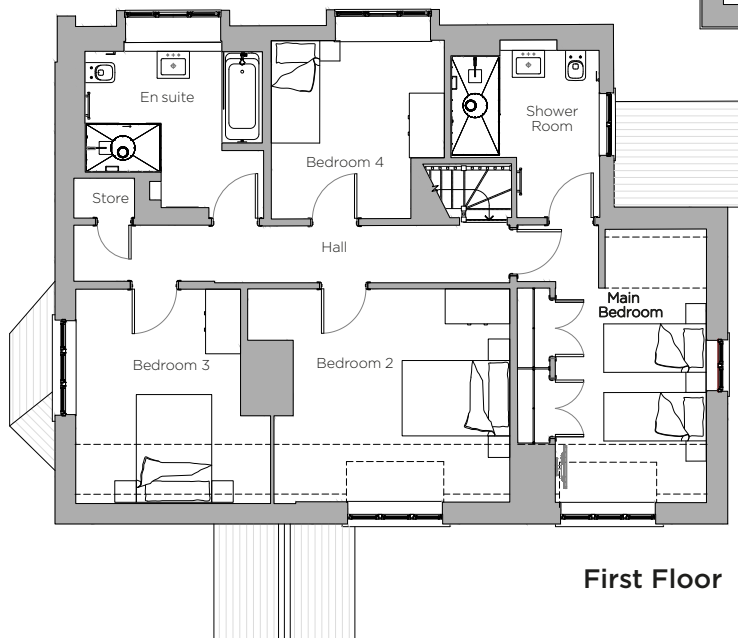


Audley Stanbridge Earls

Cottage 01
 Havering Cottage four bedrooms
 Plot C01



Ground Floor



First Floor



Internal Measurements

	Metric (m)	Imperial (ft)
Living Room	4.8 x 5.2	15'7" x 17'0"
Dining Room	3.6 x 5.1	11'8" x 16'7"
Kitchen	3.3 x 5.1	10'8" x 16'7"
Utility Room	3.2 x 1.5	10'4" x 4'9"
Study	2.6 x 2.9	8'5" x 9'5"
Main Bedroom	2.8 x 5.1	9'1" x 16'7"
Bedroom 2	4.8 x 3.9	15'7" x 12'7"
Bedroom 3	3.6 x 3.9	11'8" x 12'7"
Bedroom 4	3.2 x 3.3	10'4" x 10'8"

Audley Stanbridge Earls
 Awbridge, Nr Romsey,
 Hampshire SO51 0ZS
 01794 278 303
www.audleyvillages.co.uk

These floor plans are illustrative and for marketing purposes only. Furniture shown to illustrate possible room layouts and not included within the sale. Designs vary according to plot. All details should be checked at the Sales Office.



Audley Stanbridge Earls

Cottage, 4 bedroom



Property highlights

- Large four bedroom cottage situated near the entrance to the village
- Kitchen with SieMatic units and integrated appliances
- Utility room which is accessed from the back of the cottage
- Living room, dining room and study are all separate rooms
- Downstairs WC
- Private terrace
- Upstairs the main bedroom has an en suite shower room
- Guest bathroom
- Two good size double rooms and one slightly smaller bedroom

Audley Stanbridge Earls
Awbridge, Nr Romsey,
Hampshire SO51 0ZS
01794 278 303
www.audleyvillages.co.uk

CGIs & Photos for illustration purposes only

