

4 Kineton Hall



4 Kineton Hall

Ground Floor, one bed apartment

A, well-proportioned spacious ground floor apartment with bright west-facing aspect. The modern SieMatic kitchen has Neff and Bosch appliances, and the large living room has a floor to ceiling feature window. This unique apartment sits within Kineton Hall, a sympathetically renovated building close to the facilities within Binswood Hall.

Property specifications

- Living room has large west-facing window
- Full-width fitted wardrobes in the bedroom
- Large en-suite wet room with shower and bath
- Modern SieMatic kitchen with built-in appliances
- Separate guest WC
- Attractive courtyard garden adjacent to the apartment

Guide Price £325,000 (other fees apply)

Monthly management fee £865.30

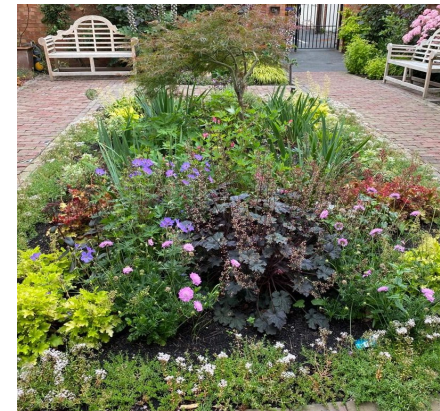
Annual ground rent £500

Bistro Credit £64.09

Viewing by appointment with the sales office.

01926 339 484

binswoodsales@audleyvillages.co.uk



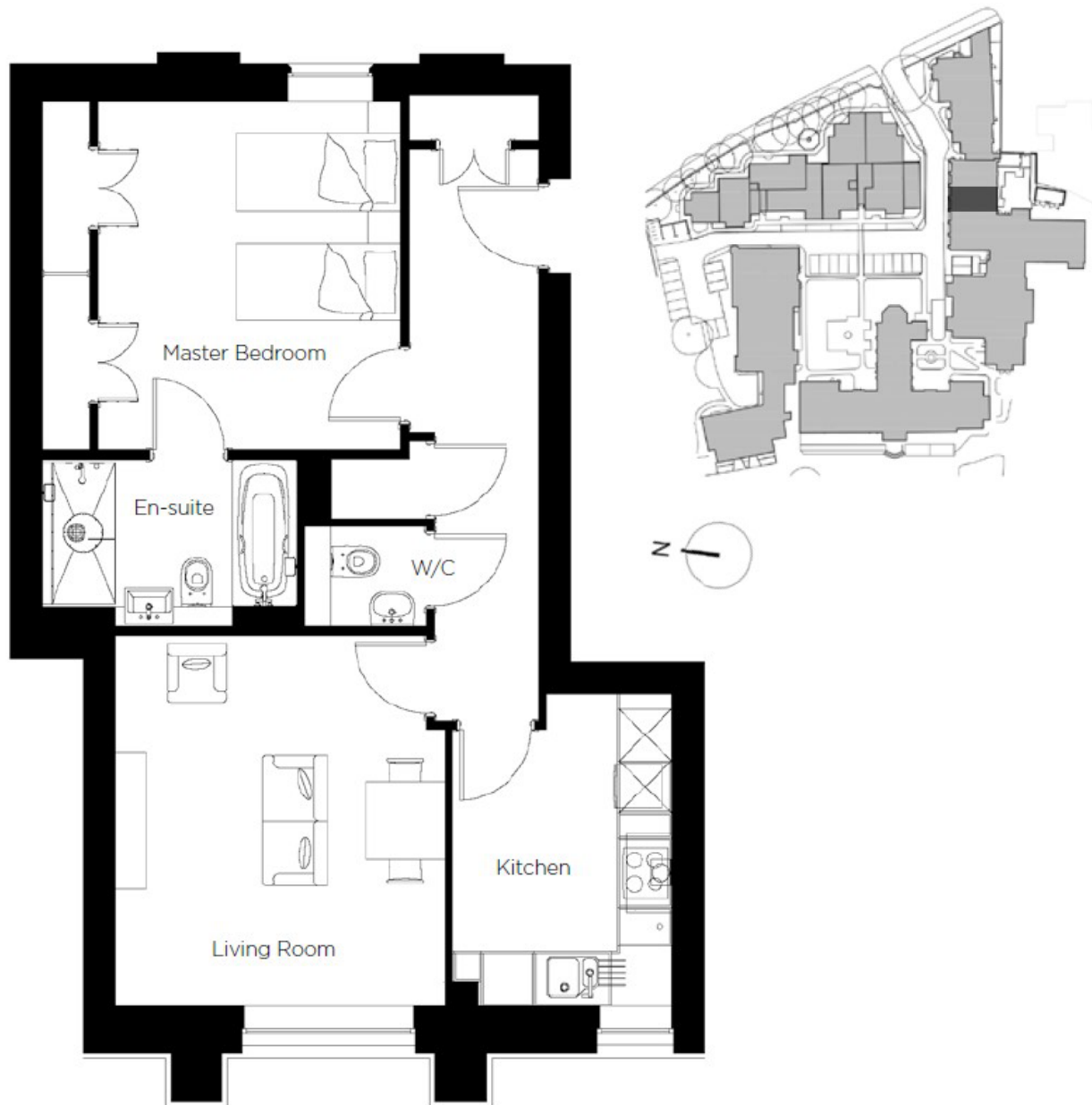
4 Kinton Hall

Internal Measurements

	Metric (m)	Imperial (ft)
Living/Dining Room	4.31 x 3.82	14'2" x 12'6"
Kitchen	3.63 x 2.54	11'11" x 8'4"
Bedroom	4.05 x 3.51	13'3" x 11'6"
Total Sq.Ft 834		

Built in wardrobes in bedrooms have not been included in the overall dimensions. Maximum measurements shown.

Score	Energy rating	Current	Potential
92+	A		
81-91	B	81 B	81 B
69-80	C		
55-68	D		
39-54	E		
21-38	F		
1-20	G		



These pages are intended for marketing purposes only. Designs vary according to plot and all details should be checked at the Sales office. July 2022.

