

TWO BEDROOM, GROUND FLOOR APARTMENT

**23 Beckings Court, Plot 102. Audley Wycliffe Park,
Bigmore Lane, Horsleys Green, Buckinghamshire HP14 3XL
01494 324 966**

Property specifications:

- Two bedroom, ground floor apartment
- Private terrace accessible via the living room
- Open plan living room and kitchen
- Kitchen is fitted with Nobilia units and Neff appliances
- Large main bedroom with fitted wardrobes and en suite shower
- Second double bedroom
- Guest shower room with Villeroy & Boch sanitaryware
- Hallway storage

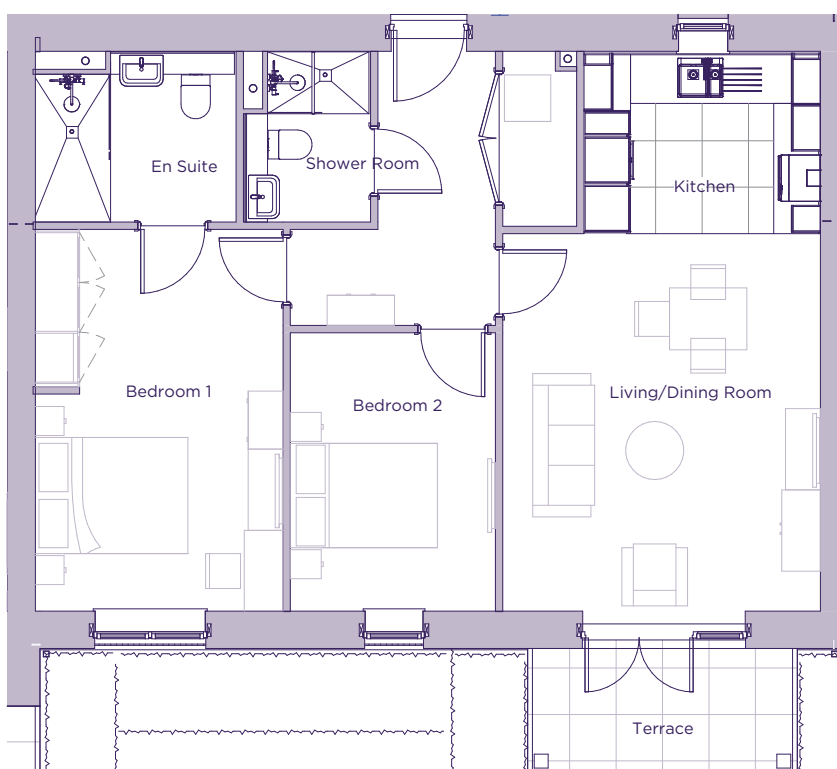
Please see the village brochure and key facts for further information.



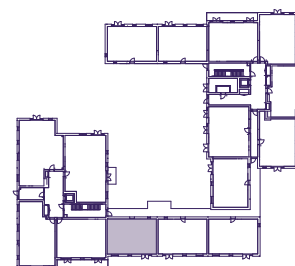
Images for illustration purposes only.

THE LAYOUT

**23 Beckings Court, Plot 102. Audley Wycliffe Park,
Bigmore Lane, Horsleys Green, Buckinghamshire HP14 3XL**



Internal Measurements	Metric (m)	Imperial (ft)
Bedroom 1	4.93 x 3.20	16'2" x 10'6"
Bedroom 2	3.60 x 2.65	9'1" x 17'5"
Kitchen	2.35 x 3.05	11'7" x 9'10"
Living/dining room	4.88 x 4.10	20'3" x 15'3"
Services	2.26 x 0.95	4'0" x 2'8"
Terrace (approx)	1.55 x 3.31	7'1" x 4'11"



These floor plans are illustrative and for marketing purposes only. Maximum measurements are shown with longer dimension quoted first. Dimensions are quoted for the main area of the room only. Built-in wardrobes not included in the overall room dimensions. Furniture shown to illustrate possible room layouts and not included in sale. Designs vary according to plot. All details should be checked at the Sales Office. November 2021.