

Audley Nightingale Place

Apartment 70
Fourth Floor Apartment

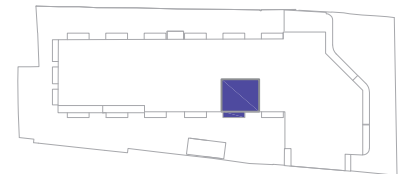


Internal Measurements

Metric (m)

Imperial (ft)

Living/Dining Room	6.1 x 3.9	20'0" x 12'10"
Kitchen	2.7 x 2.8	8'10" x 9'2"
Master Bedroom	6.1 x 3.2	20'0" x 10'6"
Bedroom 2	3.2 x 3.3	10'6" x 10'10"
Balcony	1.2 x 6.0	3'11" x 19'8"

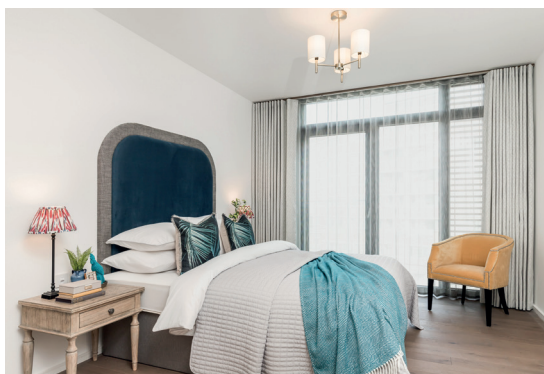


Audley Nightingale Place
3 Nightingale Lane,
London SW4 9AH
020 3802 1580
www.audleyvillages.co.uk

These floor plans are illustrative and for marketing purposes only. Maximum measurements are shown with longer dimension quoted first. Dimensions are quoted for the main area of the room only. Built-in wardrobes not included in the overall room dimensions. Furniture shown to illustrate possible room layouts and not included in sale. Designs vary according to plot. All details should be checked at the Sales Office.



Audley Nightingale Place



Audley Nightingale Place
3 Nightingale Lane,
London SW4 9AH
020 3802 1580
www.audleyvillages.co.uk

Photos for illustration purposes only.

