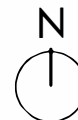
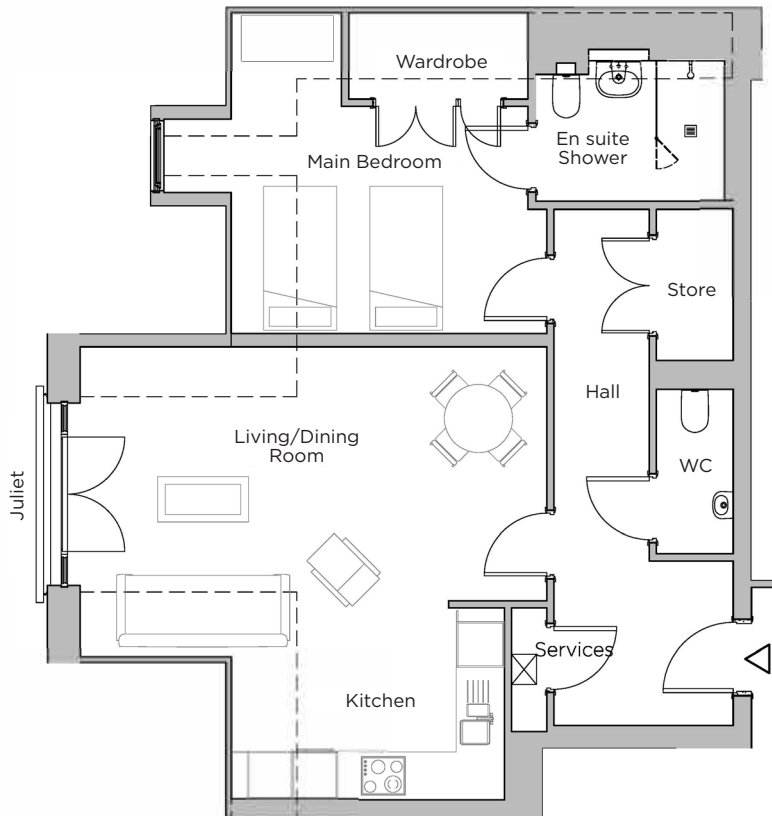
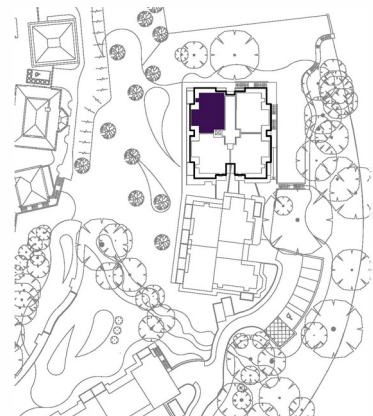


Audley Ellerslie

16 Vines Court
Third Floor Apartment
Plot 95



Internal Measurements	Metric (m)	Imperial (ft)
Kitchen/Living/Dining Room	6.16 x 5.98	20'3" x 19'7"
Main Bedroom	3.91 x 2.99	12'10" x 9'10"



Audley Ellerslie
Abbey Road, Malvern, Worcestershire WR14 3HL
01684 438 400
www.audleyvillages.co.uk



These floorplans are illustrative and for marketing purposes only. Maximum measurements are shown. Wardrobes not included in the overall room dimensions. Furniture shown to illustrate possible room layouts and not included in sale. Designs vary according to plot. All details should be checked at the Sales Office.

A: 25 September 2017 C: 211201

Audley Ellerslie

16 Vines Court
Third Floor Apartment
Plot 95



One bedroom, first floor apartment

An immaculately presented one bedroom apartment with an open plan kitchen and living/dining room. The living/dining room has space for a dining table and chairs and has a west-facing Juliet balcony with views of the landscaped grounds. The main bathroom and en suite shower rooms are both fitted with Villeroy & Boch sanitaryware and elegant Hansgrohe fittings.

Property specifications:

- Juliet balcony in large open plan kitchen and living/dining room
- Main bedroom with large fitted wardrobes and en suite shower room
- SieMatic kitchen with integrated appliances
- Additional WC located in the hallway

Audley Ellerslie
Abbey Road, Malvern, Worcestershire WR14 3HL
01684 438 400
www.audleyvillages.co.uk

