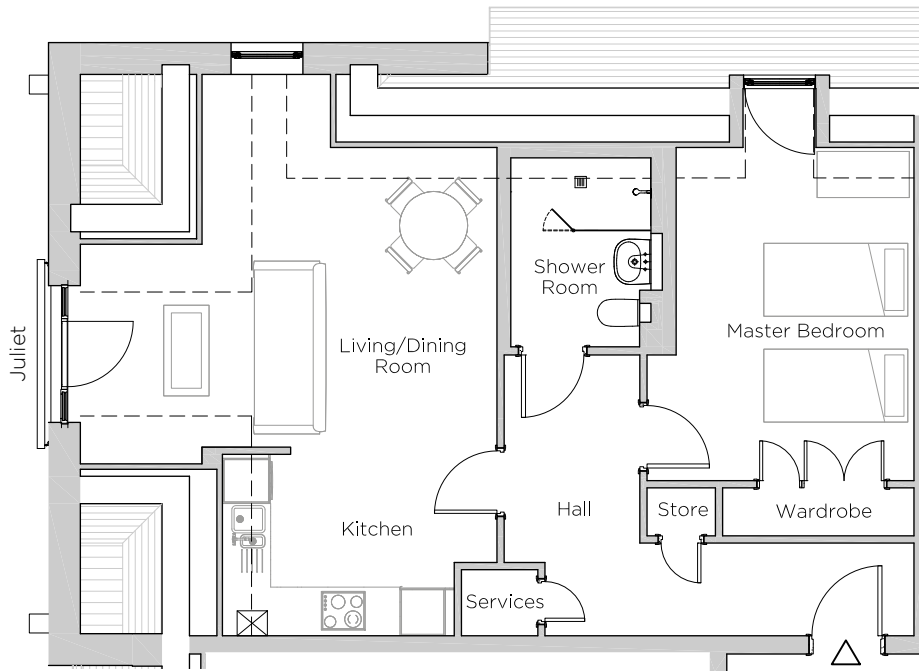


# Audley Ellerslie

18 Austin Court  
Plot 78



## Internal Measurements

## Metric (m)

## Imperial (ft)

Living/Dining Room

5.51 x 3.96

18'1" x 13'0"

Kitchen

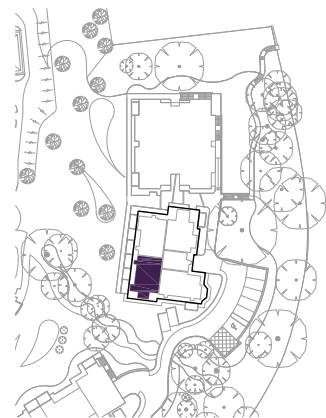
3.06 x 2.40

10'1" x 7'10"

Master Bedroom

3.14 x 4.41

10'4" x 14'6"



Audley Ellerslie  
Abbey Road, Malvern, Worcestershire WR14 3HL  
01684 438 400  
[www.audleyvillages.co.uk](http://www.audleyvillages.co.uk)

These floorplans are illustrative and for marketing purposes only. Maximum measurements are shown. Wardrobes not included in the overall room dimensions. Furniture shown to illustrate possible room layouts and not included in sale. Designs vary according to plot. All details should be checked at the Sales Office.

25 September 2017



# Audley Ellerslie

18 Austin Court  
Plot 78



## 1 bedroom, fourth floor apartment

This unique property is located in the eaves of the top floor of Austin Court. The dual-aspect open plan kitchen and living room has a south-facing Juliet balcony and space for a dining table and chairs.

The master bedroom has large built in wardrobes and views of the landscaped grounds.

Property specifications:

- Unique top floor apartment located in the eaves of the building
- Dual aspect kitchen/living room
- Fully equipped open plan SieMatic kitchen
- Lift access

Audley Ellerslie  
Abbey Road, Malvern, Worcestershire WR14 3HL  
01684 438 400  
[www.audleyvillages.co.uk](http://www.audleyvillages.co.uk)

