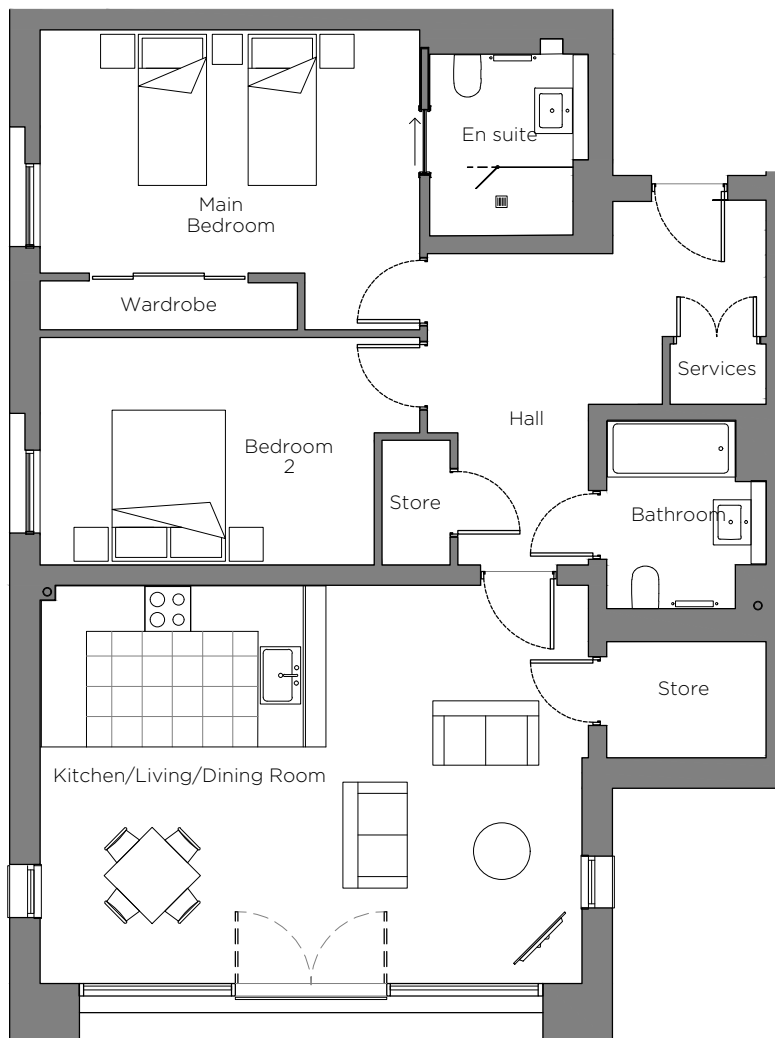


Audley Sunningdale Park

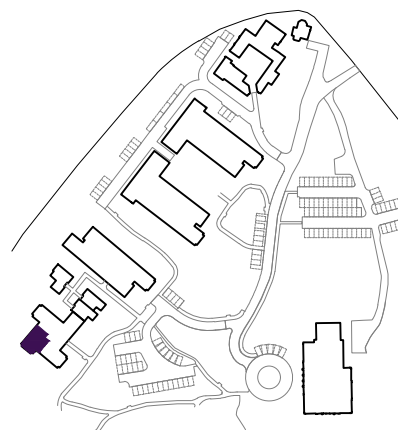
12 Crosley Court (A12)
 Second Floor, two bedroom apartment
 Plot 21



Internal Measurements

Metric (m) **Imperial (ft)**

Kitchen/Living/Dining Room	7.17 x 5.27	23'6" x 17'3"
Main Bedroom	5.02 x 3.35	16'6" x 11'0"
Bedroom 2	4.16 x 2.74	13'8" x 9'0"



Audley Sunningdale Park
 Silwood Road,
 Ascot, Berkshire SL5 0QB
 01344 859 239
www.audleyvillages.co.uk

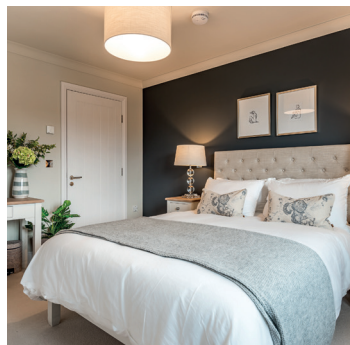
These floor plans are illustrative and for marketing purposes only. Maximum measurements are shown with longer dimension quoted first. Dimensions are quoted for the main area of the room only. Built-in wardrobes not included in the overall room dimensions. Furniture shown to illustrate possible room layouts and not included in sale. Designs vary according to plot. All details should be checked at the Sales Office.

A: 23 June 2021
 C: 224050



Audley Sunningdale Park

2 bedroom, second floor apartment



Property highlights

- Triple-aspect, new-build apartment
- Luxury Villeroy & Boch bathroom and en suite shower room
- South-west facing views of the landscaped grounds
- Floor to ceiling windows with Juliet balcony in the living/dining room
- Fully integrated SieMatic kitchen with Neff appliances
- Large dedicated store room off the living room
- Guest bathroom
- Carpeted and decorated throughout
- Lift access
- Membership to the Audley Club



Audley Sunningdale Park
Silwood Road,
Ascot, Berkshire SL5 0QB
01344 859 239
www.audleyvillages.co.uk

CGIs & Photos for illustration purposes only

