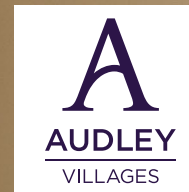


# 14 Inglewood House

£750,000  
(other fees apply)



*It can only be Audley.*



A spacious and well appointed two-bedroom first floor apartment within the prestigious Inglewood House at Audley Inglewood, offering generous proportions, elegant finishes and superb convenience to village facilities. The large living room features double Juliet balconies with inward-opening French doors enjoying a westerly outlook across the beautifully maintained gardens. A modern, well-appointed kitchen is fitted with high-quality Siematic cabinetry and integrated appliances, complemented by a separate family bathroom. Both bedrooms are well sized, with the main bedroom benefitting from an en-suite shower room. Newly redecorated throughout and ideally positioned for direct access to the main house amenities and terrace, this exceptional apartment combines contemporary comfort with an enviable setting in one of Audley's most desirable village locations.

### Key Features

- Spacious first floor apartment situated within Inglewood House
- Double Juliet balcony overlooking Inglewood Gardens
- Attractive features including high corniced ceilings & double height windows
- SieMatic fitted kitchen with integrated appliances including fridge freezer, dishwasher, oven, microwave oven, ceramic halogen hob and a washer dryer
- Main bedroom including en suite shower room & Integrated wardrobes
- Second bedroom with selection of fitted furniture
- Separate Bathroom including walk in shower cubicle

### Fees

Monthly management fee £1212.56

Annual ground rent £250

Parking: No parking fees apply

Council Tax Band: F via West Berkshire Council

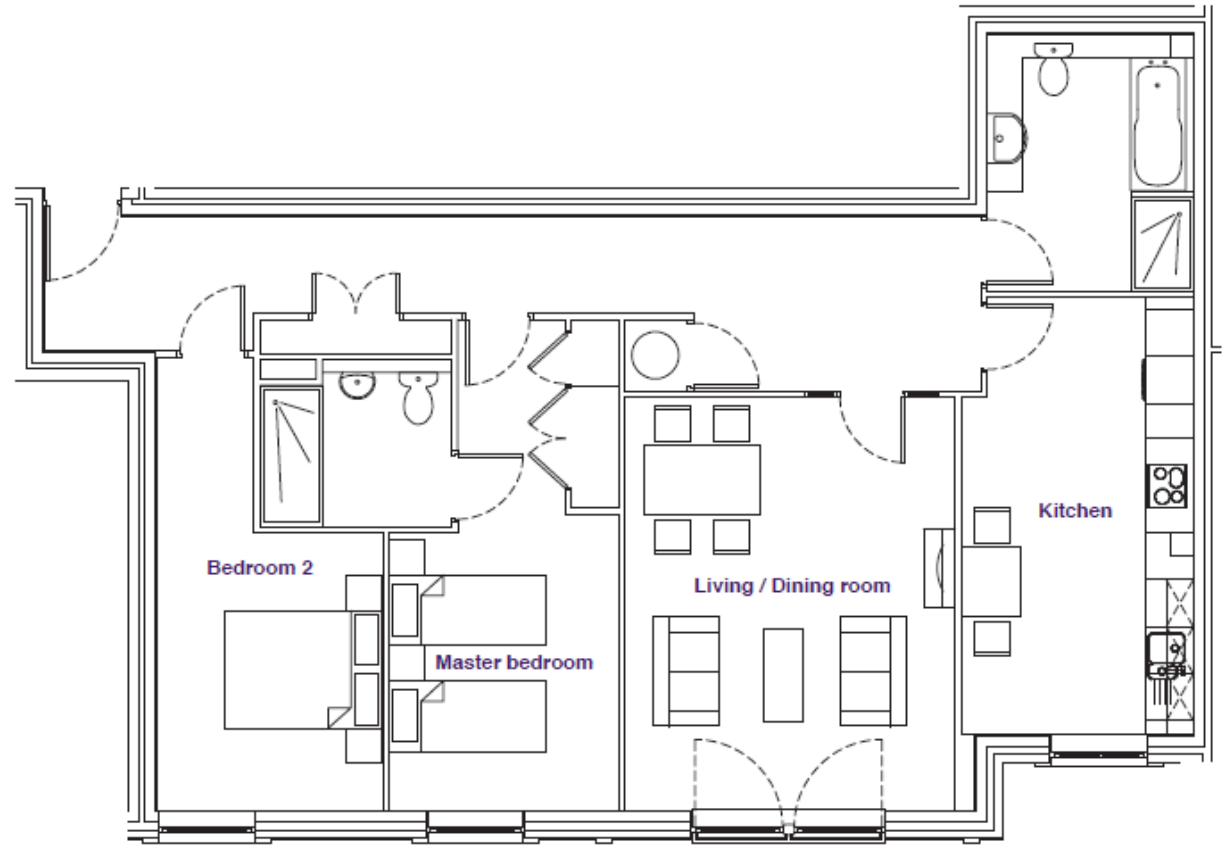
Tenure: Leasehold

Audley owners have our firm undertaking that their monthly management fee will increase only once a year. A deferred management charge also applies to this property, please ask the sales team for more information.

Viewing by appointment with the sales office.

01488 682 100 [inglewoodsales@audleyvillages.co.uk](mailto:inglewoodsales@audleyvillages.co.uk)





Internal Measurements	Metric (m)	Imperial (ft)
Living room	5.30m x 4.20m	17'5" x 13'9"
Kitchen	5.60m x 2.95m	18'4" x 9'8"
Bedroom One	3.80m x 2.95m	12'6" x 9'8"
Bedroom Two	3.50m x 2.90m	11'0" x 9'6"

Square Foot total: 1083

Built in wardrobes in bedrooms have not been included in the overall dimensions. Maximum measurements shown.

Furniture shown to illustrate possible room layouts and not included in sale.

Score	Energy rating	Current	Potential
92+	A	TBC	
81-91	B		
69-80	C		
55-68	D		
39-54	E		
21-38	F		
1-20	G		

