

9 Alexander Court

Guide Price £380,000
(other fees apply)



It can only be Audley.



This two bedroom first floor apartment has a prime location within Audley Mote House retirement village close to all the central village amenities. The bedroom boasts built in double wardrobes and an ensuite shower room.

The SieMatic kitchen has good surface space and integrated appliances, there is an additional bathroom, a further double bedroom and a good size lounge with Juliet balcony.

Key Features

- Spacious living room with a Juliet balcony
- Main bedroom with ensuite shower room and a double wardrobe
- Guest bathroom
- SieMatic kitchen with integrated appliances including fridge freezer, dishwasher, oven, hob, microwave oven, and a washing machine
- Permitted allocated parking space

Fees

Monthly Management Fee: £1,226.07

Annual ground rent: £500

Parking: No parking fees apply

Council Tax Band: E

Tenure: Leasehold

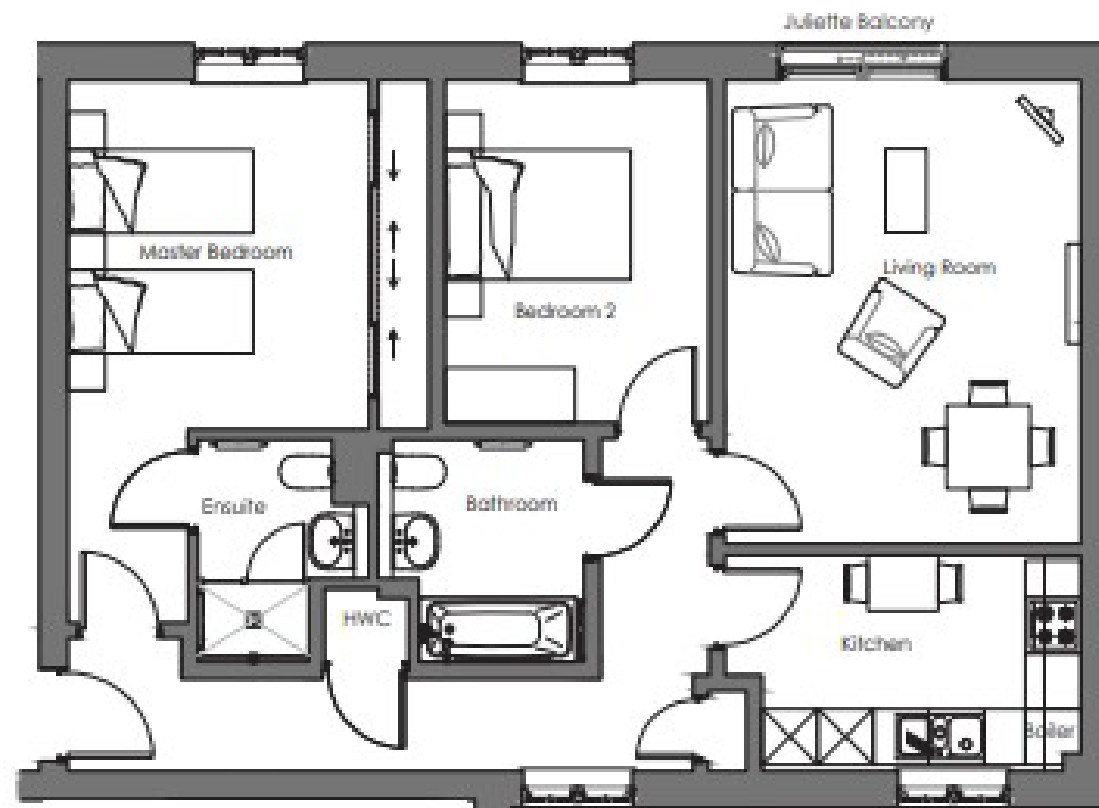
Audley owners have our firm undertaking that their monthly management fee will increase only once a year. A deferred management charge also applies to this property. This charge is payable on change of occupier and based on the final achieved sale price or the open market value, whichever is greater. 1% per year or part-year up to a maximum of 15 years (15%).

Viewing by appointment with the sales office.

01622 737 279 motesales@audleyvillages.co.uk



Internal Measurements	Metric (m)	Imperial (ft)
Living room / Dining room	4.99 X 3.84	16'5" X 12'7"
Kitchen	3.84 X 2.33	12'7" X 7'8"
Main Bedroom	3.76 X 3.25	12'4" X 10'8"
Bedroom two	3.69 X 2.85	12'1" X 9'4"
Ensuite	2.33 X 1.68	7'8" X 5'6"



Built in wardrobes in bedrooms have not been included in the overall dimensions. Maximum measurements shown.

Furniture shown to illustrate possible room layouts and not included in sale.

Score	Energy rating	Current	Poten
92+	A		
81-91	B	83 B	83
69-80	C		
55-68	D		
39-54	E		
21-38	F		
1-20	G		

