

TWO BEDROOM, SECOND FLOOR APARTMENT

**The Willows, Plot M04. Audley Headley Court,
Headley, Epsom, Surrey KT18 6JW
01372 662 995**

Property specifications:

- Main bedroom with dressing area and en suite
- Bathroom and en suite fitted with Villeroy & Boch sanitaryware
- Exposed roof truss partition between the living room and dining room
- Large second bedroom
- Separate kitchen with integrated appliances
- Restored property
- Hallway storage

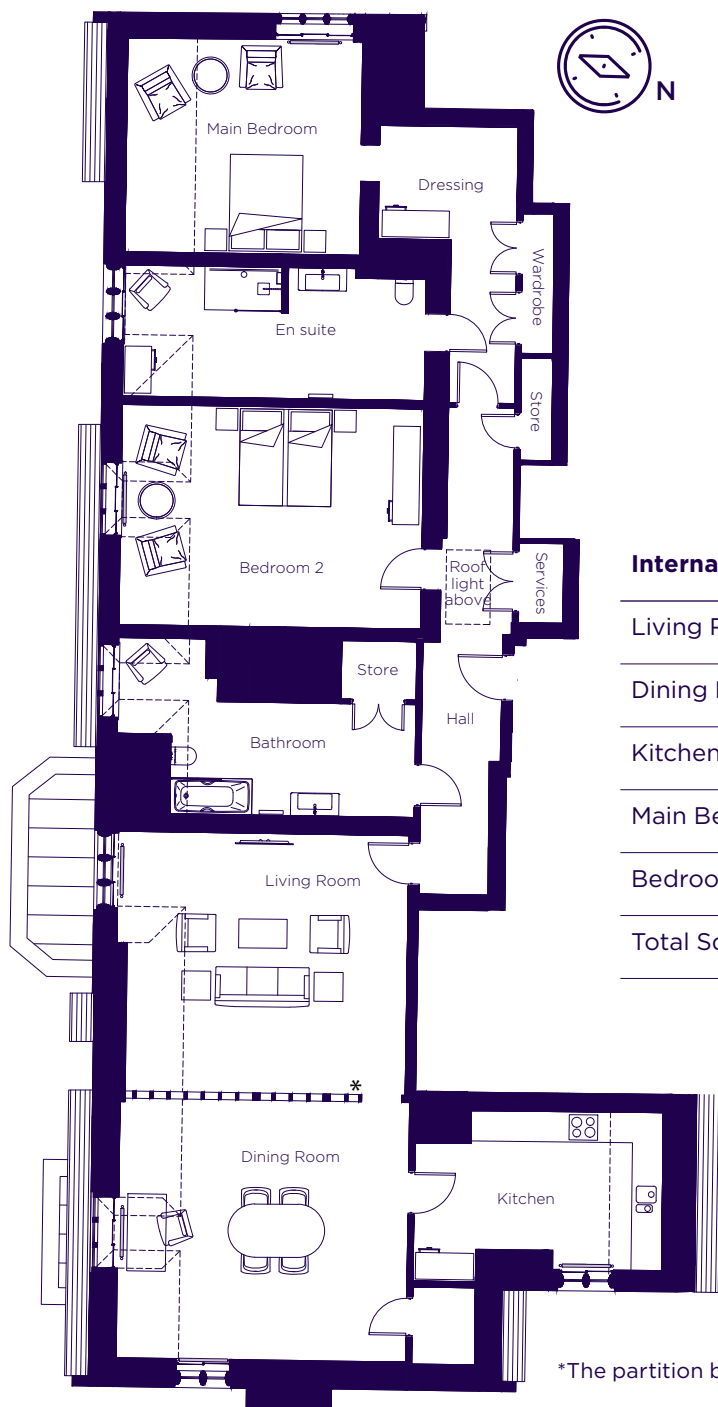
Please see the village brochure and key facts for further information.



Images for illustration purposes only.

THE LAYOUT

**The Willows, Plot M04. Audley Headley Court,
Headley, Epsom, Surrey KT18 6JW**



Internal Measurements	Metric (m)	Imperial (ft)
Living Room	5.80 x 5.38	19'0" x 17'8"
Dining Room	6.00 x 5.38	19'8" x 17'8"
Kitchen	5.13 x 3.27	16'10" x 10'9"
Main Bedroom	4.86 x 4.42	15'11" x 14'6"
Bedroom 2	6.25 x 4.56	20'6" x 14'11"
Total Sq. Ft.		2,271

*The partition between the living room and dining room is an exposed roof truss.

These floorplans are illustrative and for marketing purposes only. Maximum measurements are shown with longer dimension quoted first. Dimensions are quoted for the main area of the room only. Wardrobes not included in the overall room dimensions. Furniture shown to illustrate possible room layouts and not included in sale. Designs vary according to plot. Sq. Ft. is correct at time of print, and subject to 5% change during build. All details should be checked at the Sales Office.