

# TWO BEDROOM, GROUND FLOOR APARTMENT

**The Maple, Plot M08. Audley Headley Court,  
Headley, Epsom, Surrey KT18 6JW  
01372 662 995**

---

## Property specifications:

- Main bedroom with fitted wardrobes and en suite
  - Double second bedroom and third room perfect as a study
  - En suite and guest bathroom fitted with Villeroy & Boch sanitaryware
  - Open plan kitchen, living room and dining room
  - Private terrace accessible from the living room
  - Hallway storage
  - Restored property
- 

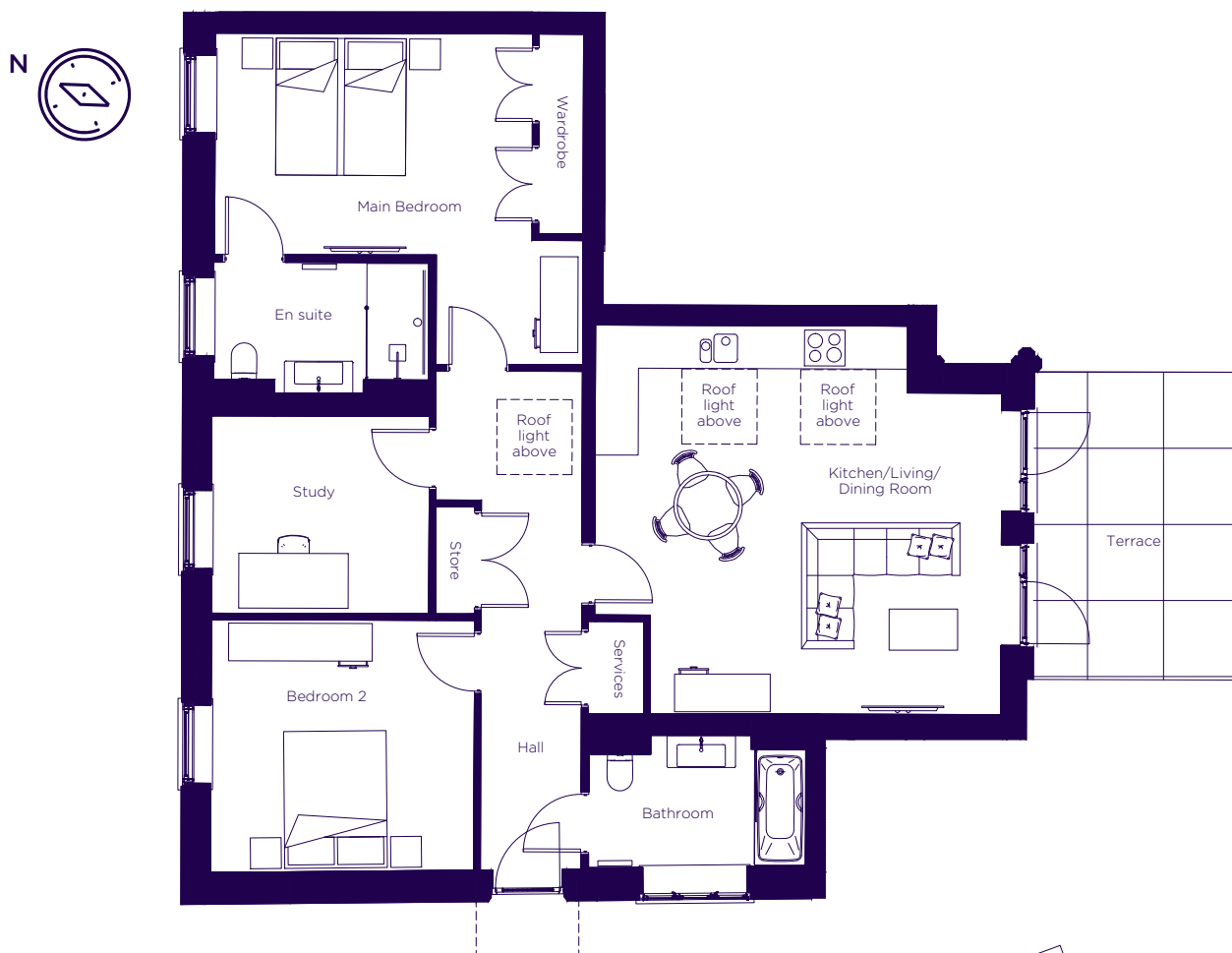
Please see the village brochure and key facts for further information.



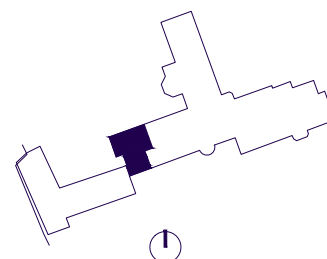
Images for illustration purposes only.

# THE LAYOUT

**The Maple, Plot M08. Audley Headley Court,  
Headley, Epsom, Surrey KT18 6JW**



Internal Measurements	Metric (m)	Imperial (ft)
Kitchen/Living/Dining Room	5.96 x 5.68	19'7" x 18'7"
Main Bedroom	4.64 x 3.16	15'3" x 10'4"
Bedroom 2	3.85 x 3.65	12'8" x 12'0"
Study	3.18 x 2.89	10'5" x 9'6"
Terrace (approx)	4.50 x 3.00	14'9" x 9'10"
Total Sq. Ft.		1,158



These floorplans are illustrative and for marketing purposes only. Maximum measurements are shown with longer dimension quoted first. Dimensions are quoted for the main area of the room only. Wardrobes not included in the overall room dimensions. Furniture shown to illustrate possible room layouts and not included in sale. Designs vary according to plot. Sq. Ft. is correct at time of print, and subject to 5% change during build. All details should be checked at the Sales Office.