

TWO BEDROOM, GROUND FLOOR APARTMENT

**4 The Stables, Plot M11. Audley Headley Court,
Headley, Epsom, Surrey KT18 6JW
01372 662 995**

Property specifications:

- Main bedroom with built-in wardrobes
 - Second double bedroom
 - Jack & Jill bathroom fitted with Villeroy & Boch sanitaryware
 - Large kitchen with integrated Neff appliances and Bosch washer/dryer
 - Private terrace accessible from the kitchen
 - Hallway storage
 - Membership to the Audley Club
 - Restored property
-

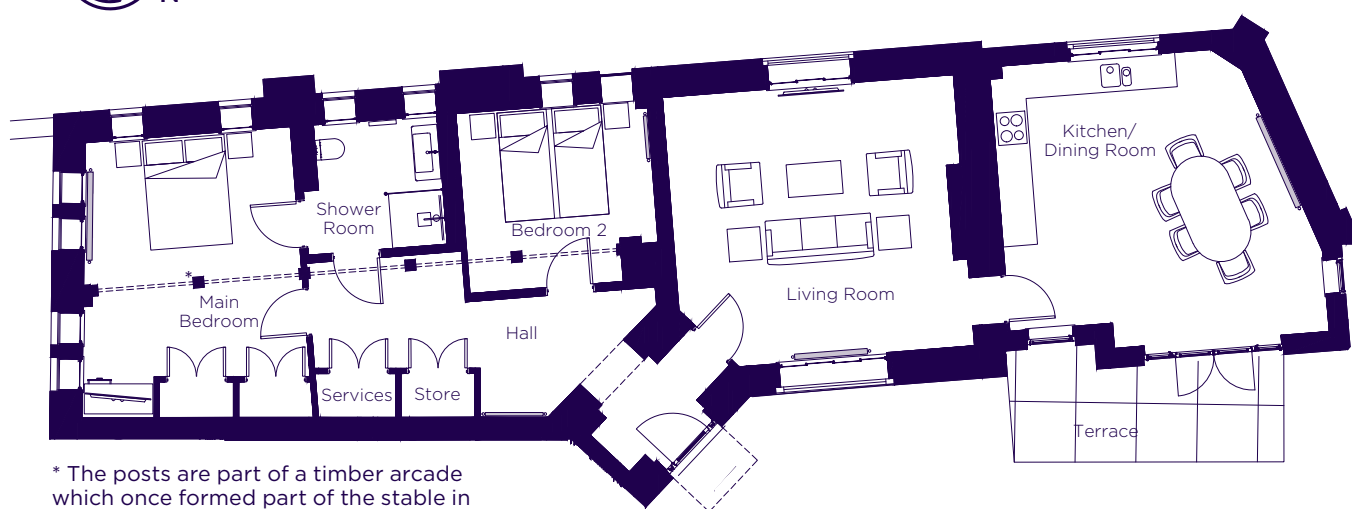
Please see the village brochure and key facts for further information.



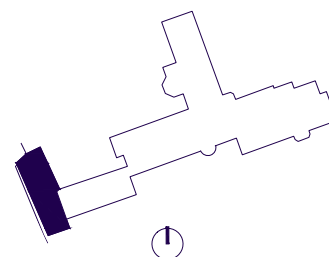
Images for illustration purposes only.

THE LAYOUT

**4 The Stables, Plot M11. Audley Headley Court,
Headley, Epsom, Surrey KT18 6JW**



Internal Measurements	Metric (m)	Imperial (ft)
Living Room	5.34 x 4.97	17'6" x 16'4"
Kitchen/Dining Room	5.81 x 5.31	19'1" x 17'5"
Main Bedroom	5.03 x 3.78	16'6" x 12'5"
Bedroom 2	3.52 x 3.32	11'7" x 10'11"
Terrace (approx)	5.94 x 1.96	16'2" x 6'5"
Total Sq. Ft.		1,262



These floorplans are illustrative and for marketing purposes only. Maximum measurements are shown with longer dimension quoted first. Dimensions are quoted for the main area of the room only. Wardrobes not included in the overall room dimensions. Furniture shown to illustrate possible room layouts and not included in sale. Designs vary according to plot. Sq. Ft. is correct at time of print, and subject to 5% change during build. All details should be checked at the Sales Office.