

TWO BEDROOM APARTMENT

**3 The Stables, Plot M12. Audley Headley Court,
Headley, Epsom, Surrey KT18 6JW
01372 662 995**

Property specifications:

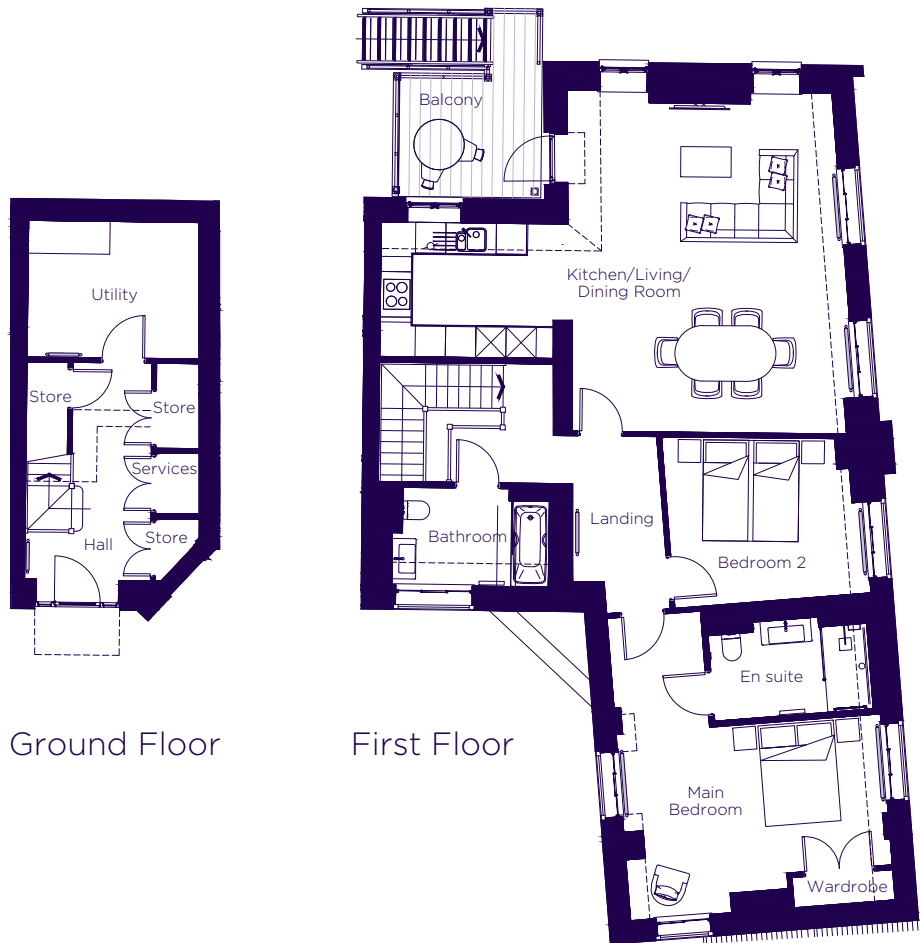
- Entrance via utility room on ground floor
- Stairs up to rest of apartment
- Main bedroom with built-in wardrobes and en suite
- Bathroom and en suite fitted with Villeroy & Boch sanitaryware
- Second double bedroom
- Large open plan kitchen/living/dining area
- Balcony accessible from the living area and has steps down
- Membership to the Audley Club

Please see the village brochure and key facts for further information.



THE LAYOUT

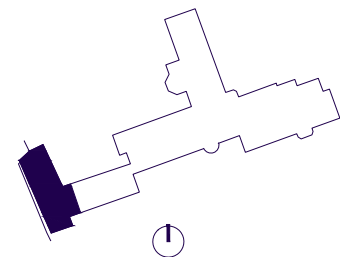
**3 The Stables, Plot M12. Audley Headley Court,
Headley, Epsom, Surrey KT18 6JW**



Ground Floor

First Floor

Internal Measurements	Metric (m)	Imperial (ft)
Kitchen/Living/Dining Room	6.78 x 5.25	22'3" x 17'3"
Main Bedroom	5.26 x 3.72	17'3" x 12'2"
Bedroom 2	3.90 x 3.43	12'10" x 11'3"
Balcony (approx)	2.85 x 2.35	9'4" x 7'9"
Total Sq. Ft.		1,504



These floorplans are illustrative and for marketing purposes only. Maximum measurements are shown with longer dimension quoted first. Dimensions are quoted for the main area of the room only. Wardrobes not included in the overall room dimensions. Furniture shown to illustrate possible room layouts and not included in sale. Designs vary according to plot. Sq. Ft. is correct at time of print, and subject to 5% change during build. All details should be checked at the Sales Office.