

# THREE BEDROOM, FIRST FLOOR APARTMENT

**10 Cunliffe Court (D11), Plot 59. Audley Sunningdale Park,  
Silwood Road, Ascot, Berkshire SL5 0QB  
01344 859 239**

## Property specifications:

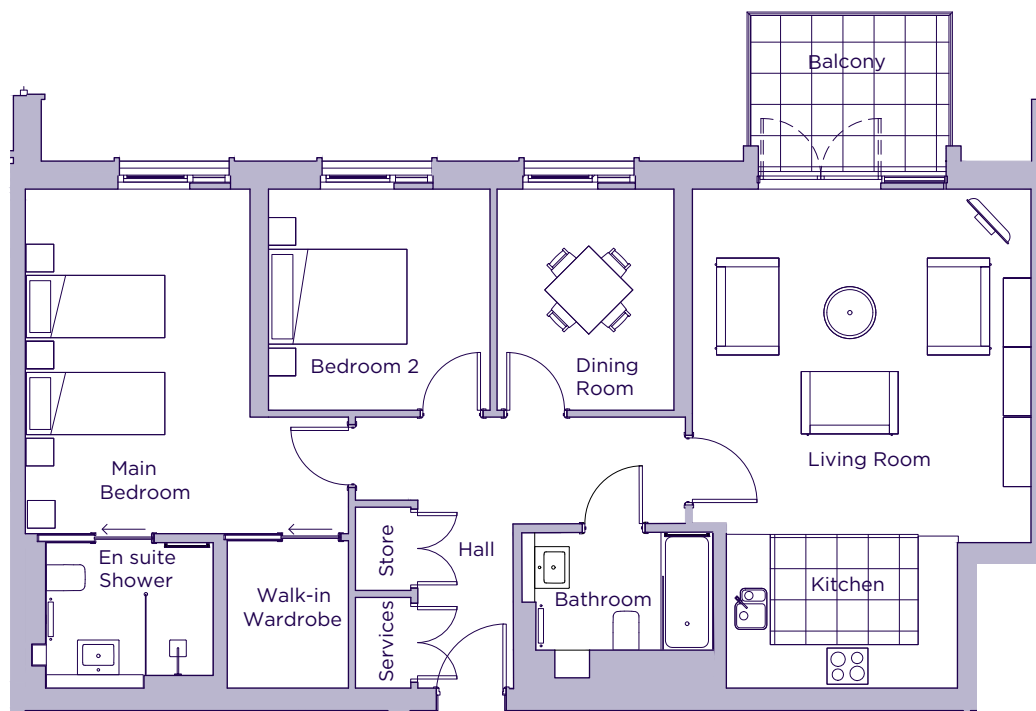
- Double bedroom with en suite shower room and walk-in wardrobe
- Second double bedroom
- Third room perfect for use as a study, hobbies room or day room
- Open plan kitchen and living space
- Bathroom and en suite fitted with elegant white Geberit sanitaryware
- French doors from the living room leading out to private balcony
- Hallway storage
- East-facing bedroom for morning sun

Please see the village brochure and key facts for further information.

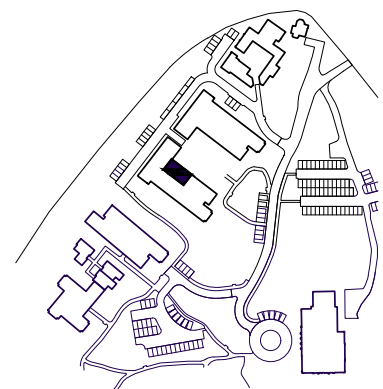


# THE LAYOUT

**10 Cunliffe Court (D11), Plot 59. Audley Sunningdale Park,  
Silwood Road, Ascot, Berkshire SL5 0QB**



Internal Measurements	Metric (m)	Imperial (ft)
Living Room	4.90 x 4.85	16'1" x 15'10"
Dining Room	3.20 x 2.55	10'6" x 8'5"
Kitchen	3.35 x 2.25	10'11" x 7'3"
Main Bedroom	5.00 x 3.25	16'4" x 10'8"
Bedroom 2	3.20 x 3.20	10'6" x 10'6"
Balcony	2.86 x 1.88	9'5" x 6'2"



These floor plans are illustrative and for marketing purposes only. Maximum measurements are shown with longer dimension quoted first. Dimensions are quoted for the main area of the room only. Built-in wardrobes not included in the overall room dimensions. Furniture shown to illustrate possible room layouts and not included in sale. Designs vary according to plot. All details should be checked at the Sales Office.