

TWO BEDROOM, FIRST FLOOR APARTMENT

**5 Ostlers Court (A28), Plot 28. Audley Wycliffe Park,
Jones Way, Horsleys Green, Buckinghamshire HP14 3XL
01494 324 966**

Property specifications:

- Large private balcony accessed from the living room and main bedroom
- The living room is a large area with space for a table
- Open plan living room and kitchen
- Fitted Nobilia kitchen with integrated appliances
- The main bedroom has an en suite shower room
- Large second double bedroom
- Guest shower room
- Hallway storage
- Lift access

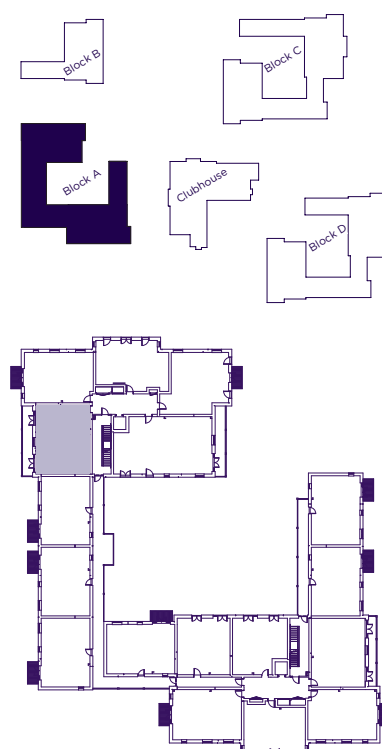
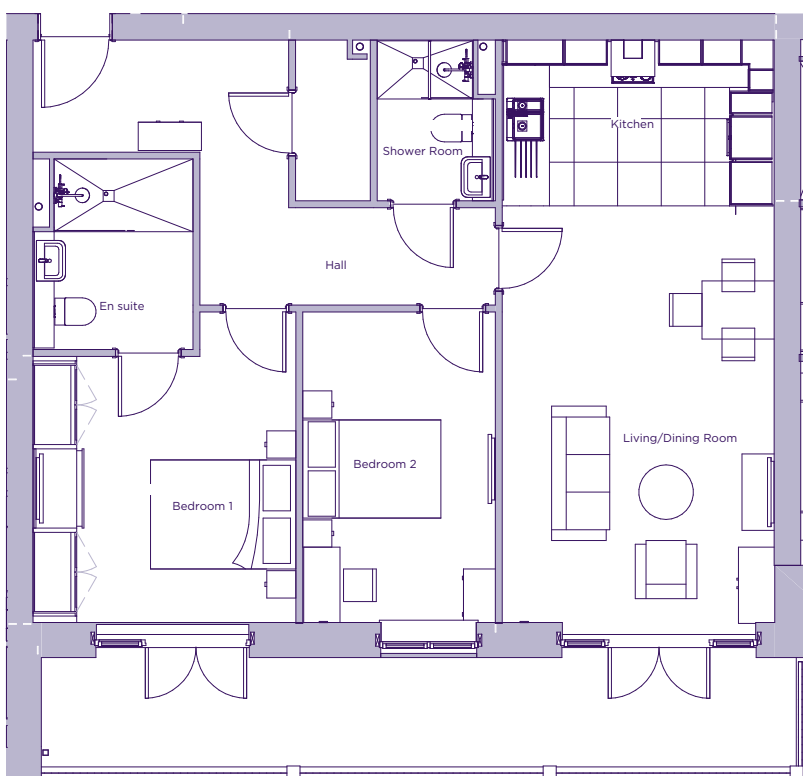
Please see the village brochure and key facts for further information.



Images for illustration purposes only.

THE LAYOUT

**5 Ostlers Court (A28), Plot 28. Audley Wycliffe Park,
Jones Way, Horsleys Green, Buckinghamshire HP14 3XL**



Internal Measurements	Metric (m)	Imperial (ft)
Bedroom 1	3.66 x 3.62	12'0" x 11'10"
Bedroom 2	4.27 x 2.65	14'0" x 8'8"
Kitchen	2.29 x 3.74	7'6" x 12'3"
Living/Dining Room	5.73 x 3.74	18'10" x 12'3"
Services	2.21 x 1.03	7'3" x 3'5"
Terrace	1.50 x 10.39	4'11" x 34'1"

These floor plans are illustrative and for marketing purposes only. Maximum measurements are shown with longer dimension quoted first. Dimensions are quoted for the main area of the room only. Built-in wardrobes not included in the overall room dimensions. Furniture shown to illustrate possible room layouts and not included in sale. Designs vary according to plot. All details should be checked at the Sales Office. November 2021.